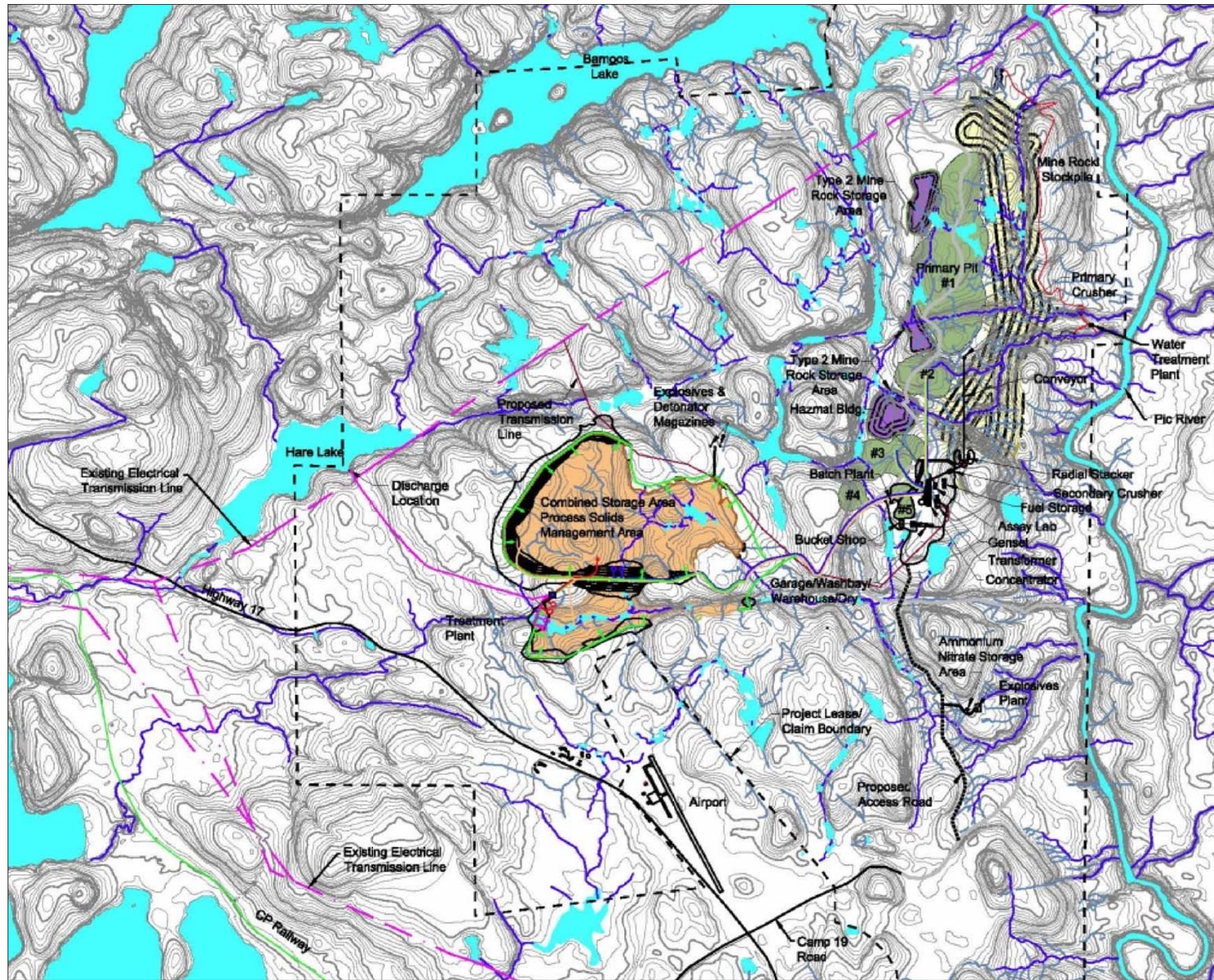


DRAFT

Figures



Legend

Existing Groundwater Monitoring Well

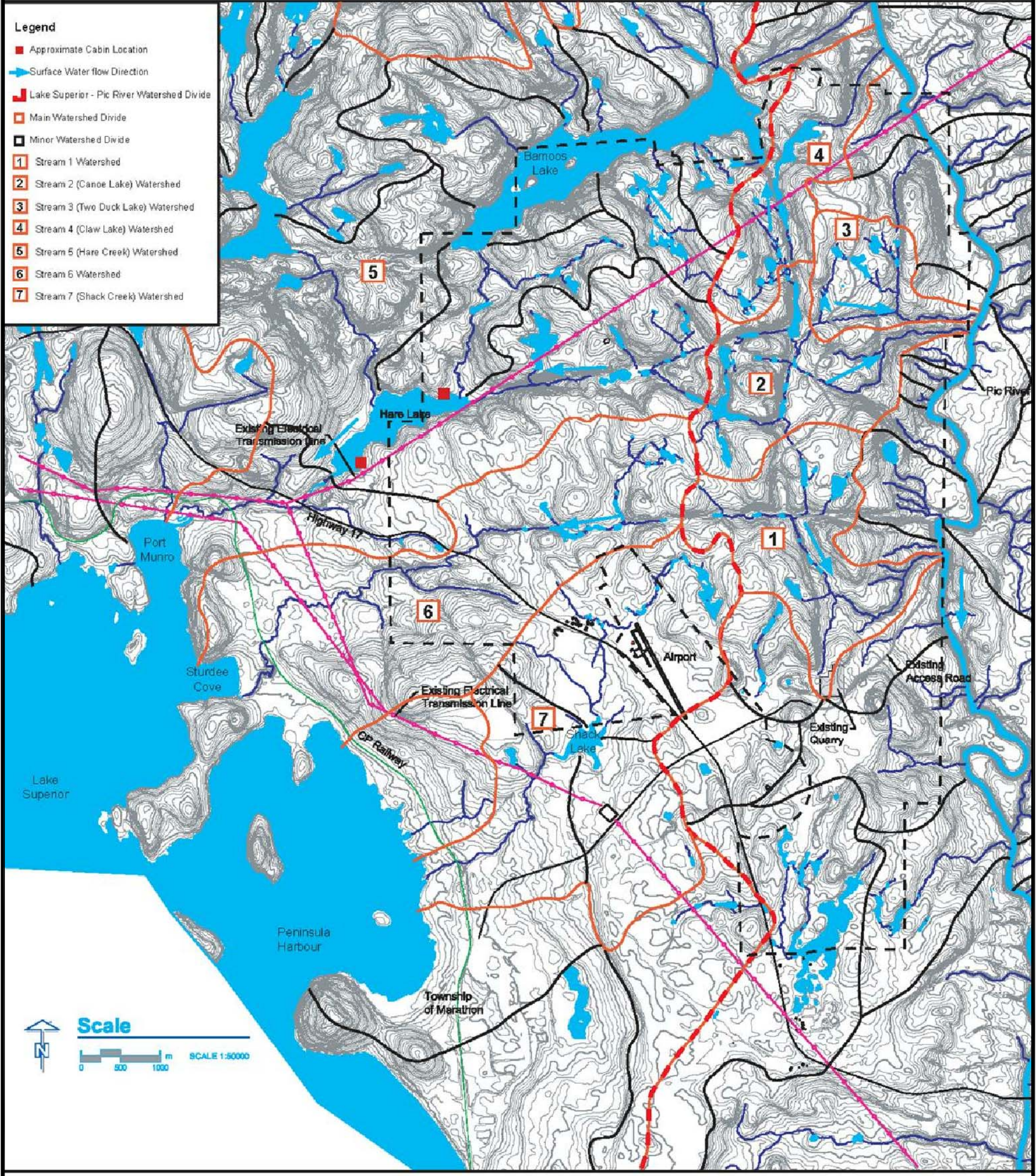
Scale

0 400 800 m SCALE 1:40000



Note: Mine Pits and Process Areas derived from Knight Piesold Consultings "Proposed Site Investigation Plan Summer 2011" Figure 1

Stillwater Canada Inc.  
Conceptual Closure Plan  
Marathon PGM-Cu Project



File No. 11-317-16

Stillwater Canada  
 Conceptual Closure Plan  
 Marathon PGM - Cu Project

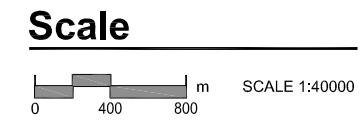
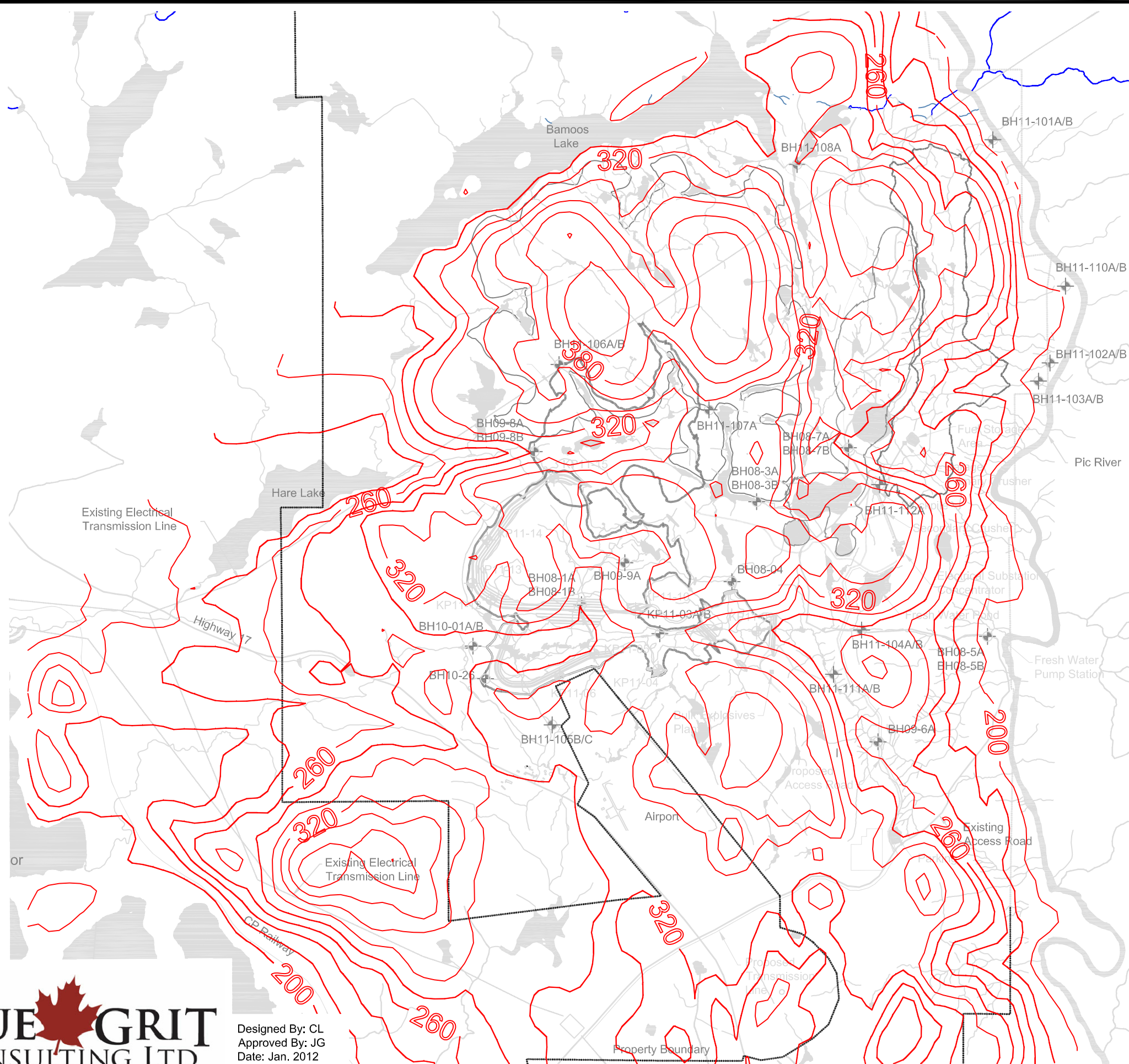
**Catchment Areas**

**FIGURE 2**

File No. 11-317-16



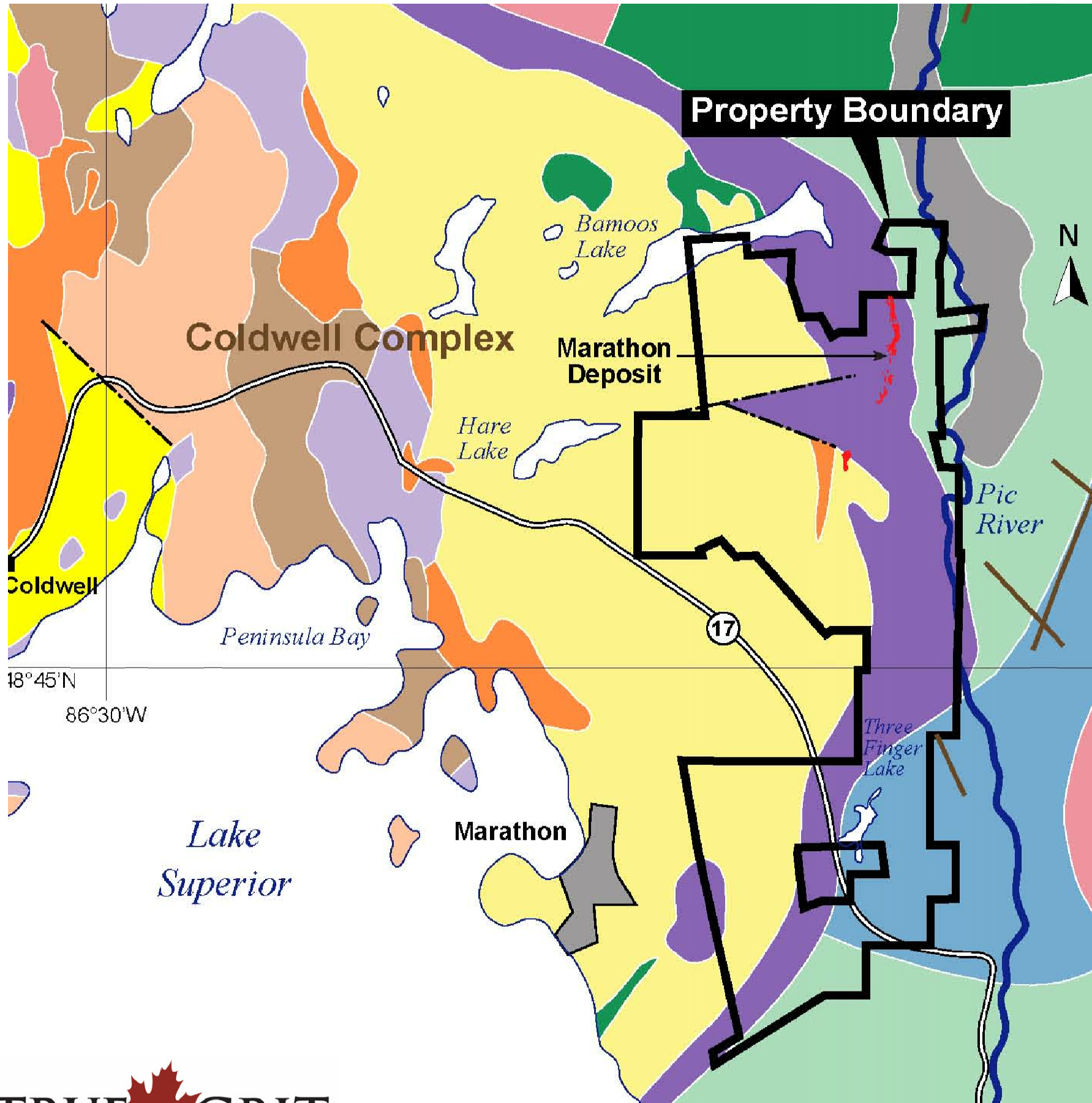
Designed By: CL  
Approved By: JG  
Date: Jan. 2012



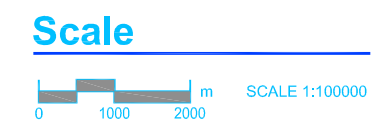
Stillwater Canada Inc.  
Conceptual Closure Plan  
Marathon PGM - Cu Project

**Modelled Head Elevations**

**FIGURE 3**



- Quaternary**
- Sand, gravel, clay, silt
- Proterozoic**
- Nepheline syenite
  - Western gabbro
  - Pyroxene syenite
  - Eastern gabbro
  - Amphibole syenite
  - Quartz syenite
  - Heterogeneous syenite
- Archean**
- Diabase dike
  - Granitic rocks
  - Metasedimentary rocks
  - Felsic metavolcanic rocks
  - Mafic metavolcanic rocks
- Fault



File No. 11-317-16

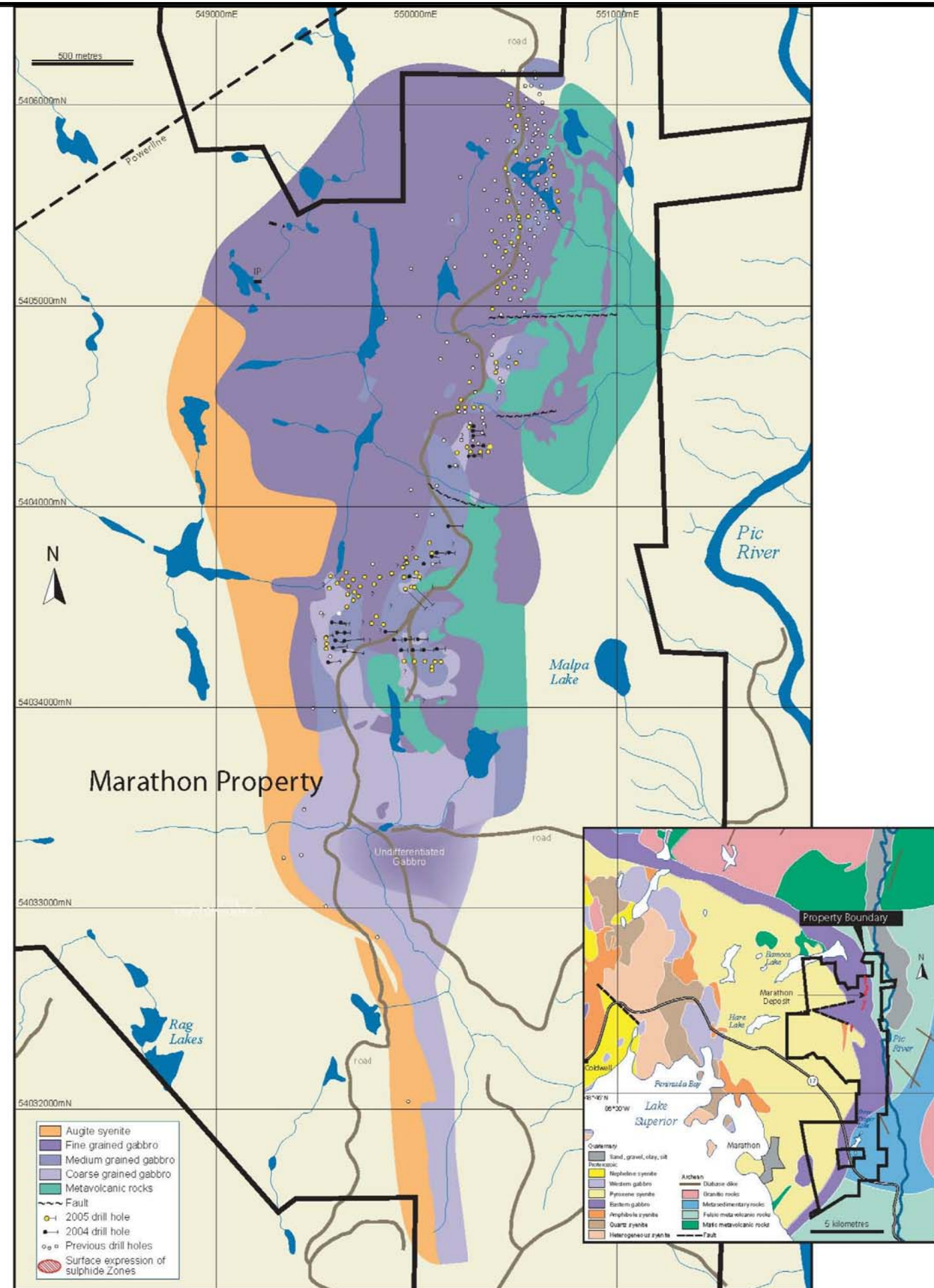
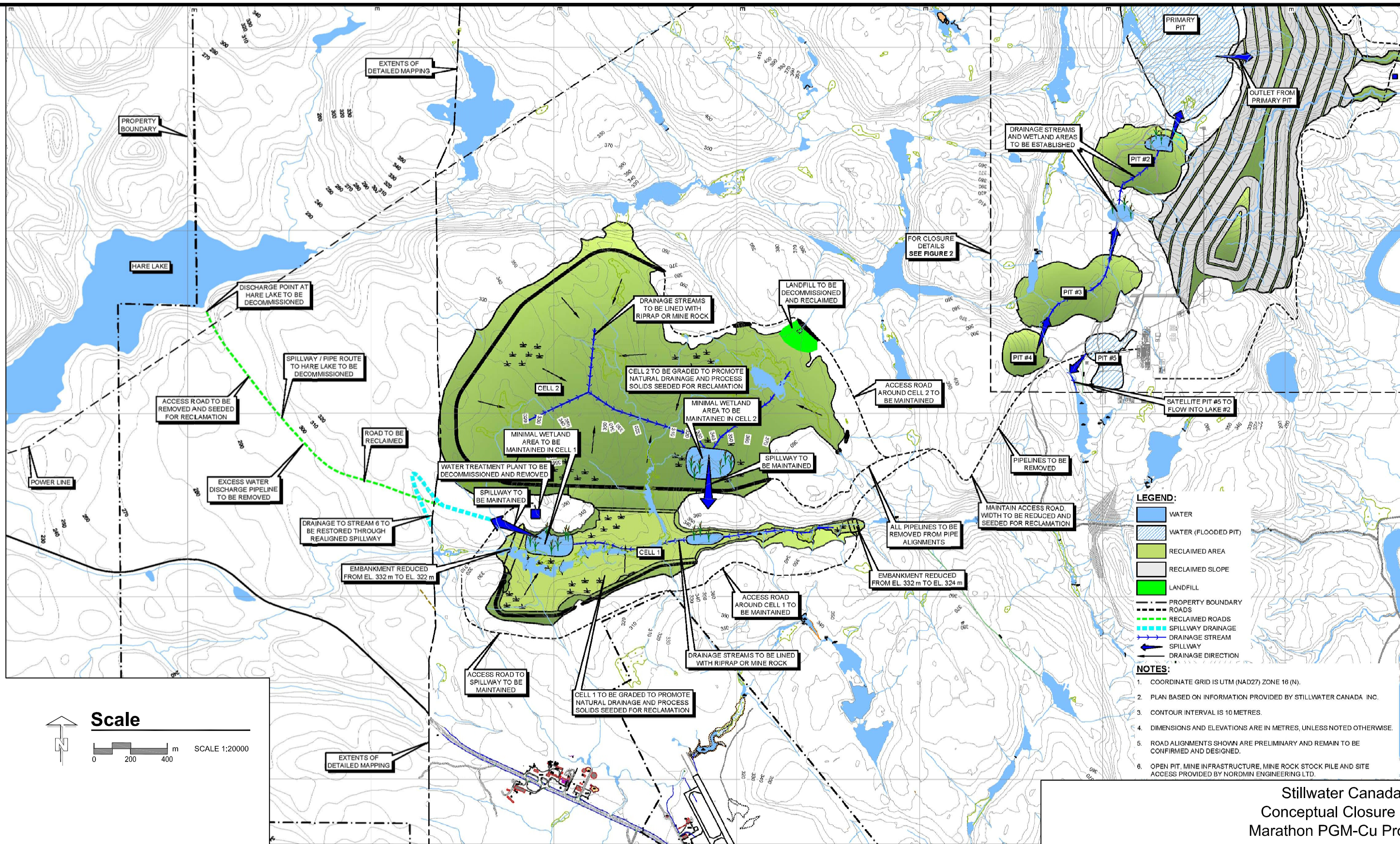


Figure Derived from P&E Mining Consultants  
March 2006 (Figure 6-3 - Property Geology)

**Property Geology**

0 250 500 m SCALE 1:25000



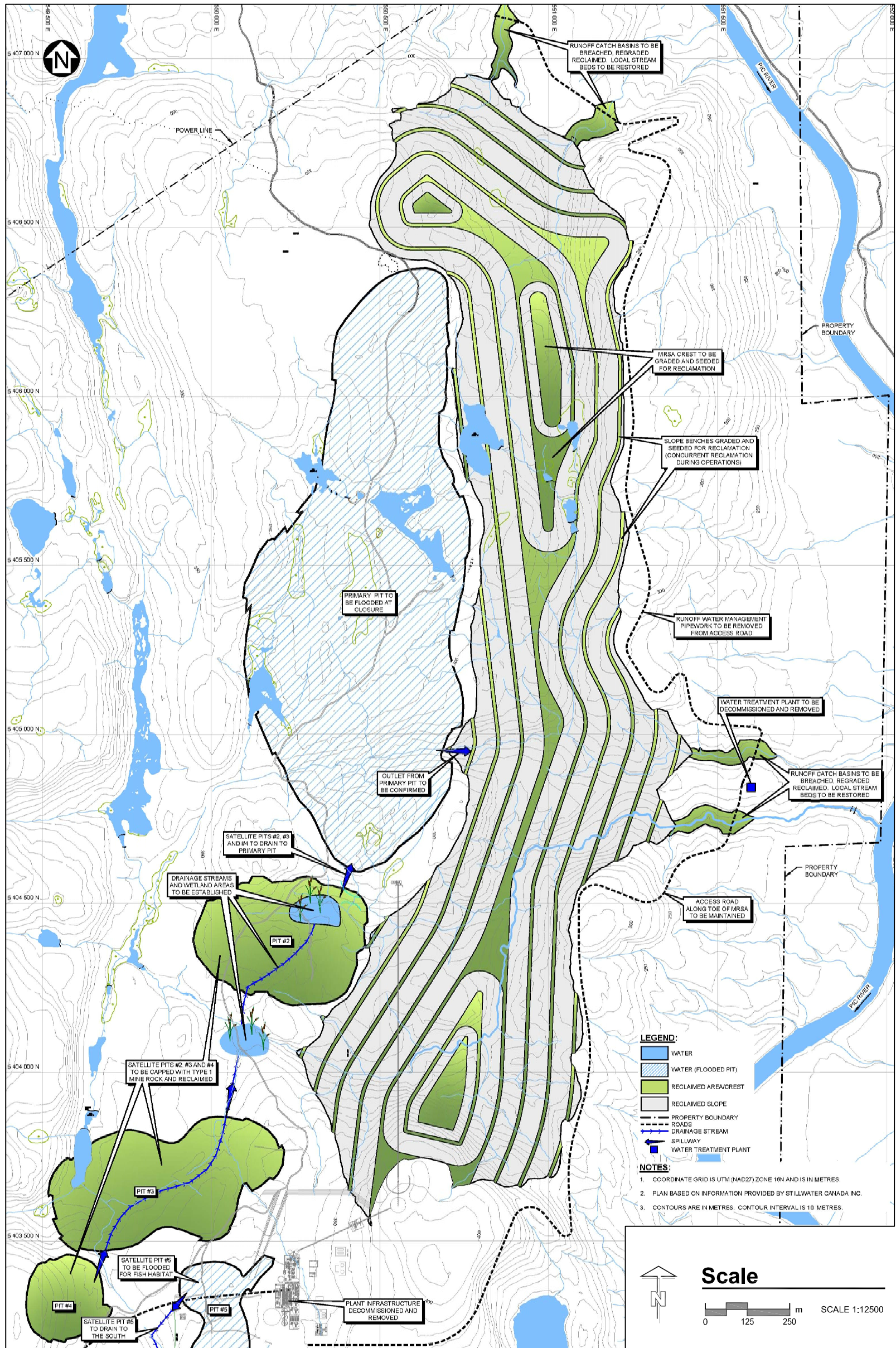
Stillwater Canada Inc.  
 Conceptual Closure Plan  
 Marathon PGM-Cu Project

**Combined Storage Area PSMF  
 Conceptual Closure Arrangement**



Designed By: CJL  
 Approved By: EGZ  
 Date: July 11, 2012

**FIGURE 6**



Stillwater Canada Inc.  
 Conceptual Closure Plan  
 Marathon PGM-Cu Project

**Mine Rock Storage Area  
 Conceptual Closure Arrangement**

**FIGURE 7**



Designed By: C.J.L.  
 Approved By: E.G.Z.  
 Date: July 11, 2012

