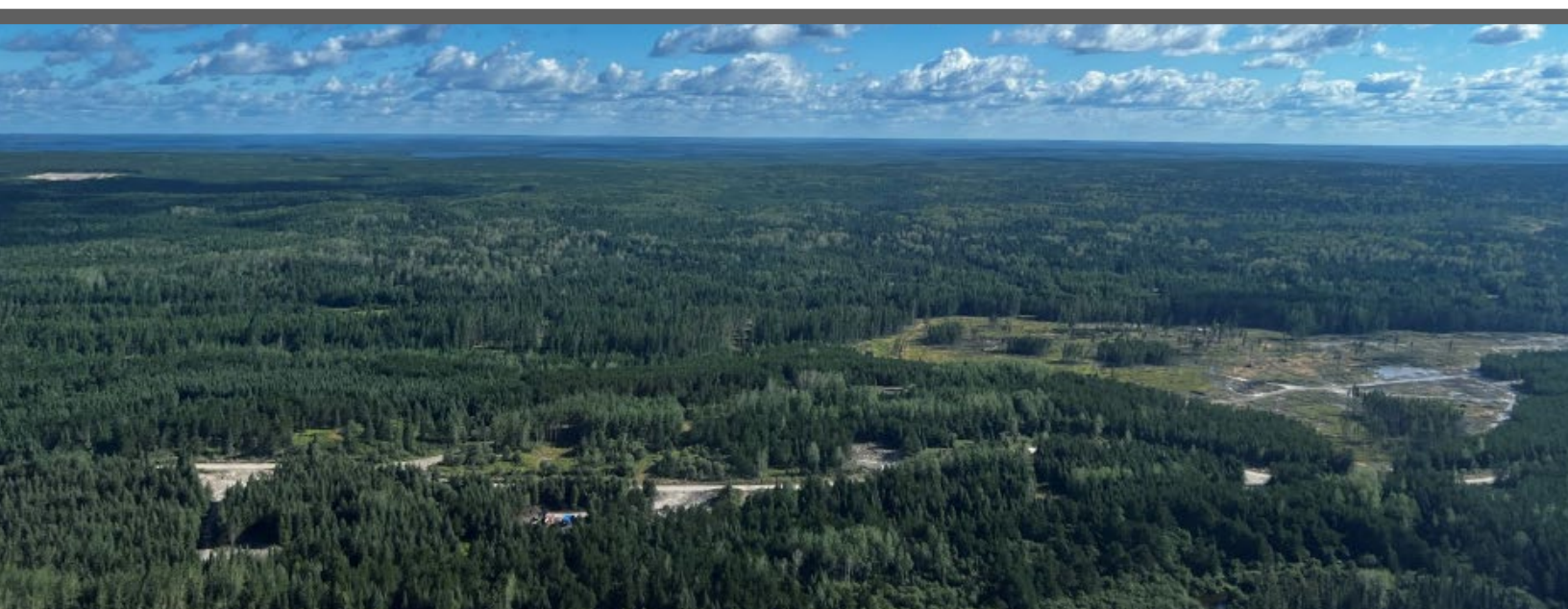




**Great Bear**

# **Great Bear Gold Project Impact Statement**

## **Section 22: Authors and Qualifications**





---

## Table of Contents

<b>22.0</b>	<b>Authors and Qualifications .....</b>	<b>22-1</b>
22.1	Overview.....	22-1

## Tables

Table 22.1-1:	Impact Statement Key Authors and Qualifications .....	22-2
---------------	---	------

## **22.0 Authors and Qualifications**

### **22.1 Overview**

The Tailored Impact Statement Guidelines request that the Impact Statement:

- Provide information on the individuals who prepared the sections within the Impact Statement
- Demonstrate that qualified individuals have prepared the information or studies.

A large number of qualified professionals were involved with the preparation of the Impact Statement for the Great Bear Project. Table 22.1-1 provides a summary of the key authors of the Impact Statement sections and appendices.

WSP Canada Inc. (WSP) also wishes to acknowledge the involvement and support of many individuals from Great Bear Resources that provided information for this document and review, and the cooperative working arrangement with SLR Consulting (Canada) Ltd. engaged by Great Bear Resources to support select aspects of the Impact Statement as noted in Table 22.1-1.

**Table 22.1-1: Impact Statement Key Authors and Qualifications**

Section / Appendix	Primary Author(s)	Professional Designations	Education	Areas of Specialty	Years of Experience	Employer <sup>(1)</sup>
<b>MAIN TEXT</b>						
<b>Section 1: Introduction and Overview</b>	Sheila Daniel	P.Geo.	M.Sc. Physical Geography Hons. B.Sc. Physical Geography	Mining impact assessments, environmental assessments, and permits and approvals	35	WSP
<b>Section 2: Environmental Setting</b>	Leah Klaassen	-	Hons. B.Sc. Forestry and Environmental Science Grad. Cert. Environmental Management	Mining environmental assessment and approvals	6	WSP
<b>Section 3: Participation and Engagement</b>	Jennifer Owen	EP	M.Sc.Env. Environmental Management	Municipal, provincial and federal environmental and social impact assessment, sustainability, stakeholder and public engagement	15	SLR
	Vanessa Ramos	-	Hons B.E.S., Environment, Resources, and Sustainability	Environmental planning, environmental and social impact assessment, public consultation	4	SLR
<b>Section 4: Alternatives Assessment</b>	Sheila Daniel	P.Geo.	M.Sc. Physical Geography Hons. B.Sc. Physical Geography	Mining impact assessments, environmental assessments, and permits and approvals	35	WSP
<b>Section 5: Project Description</b>	Sheila Daniel	P.Geo.	M.Sc. Physical Geography Hons. B.Sc. Physical Geography	Mining impact assessments, environmental assessments, and permits and approvals	35	WSP
<b>Section 6: Effects Assessment Methodology</b>	Sheila Daniel	P.Geo.	M.Sc. Physical Geography Hons. B.Sc. Physical Geography	Mining impact assessments, environmental assessments, and permits and approvals	35	WSP
<b>Section 7: Analysis of Changes to Pathway Valued Components</b>						
7.1 Influence of Consultation and Engagement	Sheila Daniel	P.Geo.	M.Sc. Physical Geography Hons. B.Sc. Physical Geography	Mining impact assessments, environmental assessments, and permits and approvals	35	WSP
7.2 Analysis of Changes to Air Quality	Caleb Vandenberg	P. Eng	B.Eng. Environmental Engineering G.Dip. Climate Risk Management	Predictive air quality assessments, greenhouse gases	14	WSP
	Zach Oldham	-	B.A.Sc. Nanotechnology Engineering	Predictive air quality assessments, air quality modelling	2	WSP
7.3 Analysis of Changes to Sound	Carlos Yoong	P.Eng.	Ph.D. Mechanical Engineering B.Eng. Mechanical Engineering	Assessments of acoustics, noise, vibration, structural dynamics including impact mitigation investigation	14	Wood <sup>(2)</sup>
7.4 Analysis of Changes to Vibration	Carlos Yoong	P.Eng.	Ph.D. Mechanical Engineering B.Eng. Mechanical Engineering	Assessments of acoustics, noise, vibration, structural dynamics including impact mitigation investigation	14	Wood <sup>(2)</sup>
7.5 Analysis of Changes to Groundwater	Simon Gautrey	P.Geo.	MBA M.Sc. Hydrogeology B.Sc. Geology	Hydrogeologist specializing in groundwater projects related to mining and groundwater resource assessments.	30	WSP
	Sarah Irvine	P.Geo	Hons. B.Sc. Earth & Environmental Science M.Sc. Geography & Environmental Management (Water)	Physical Hydrogeology, dewatering impact assessments	6	WSP
7.6 Analysis of Changes to Surface Water Flows and Levels	Mei Ling Tamkei	P.Eng.	B.Sc. Environmental Engineering	Hydrology, water balance modelling	12	WSP
7.7 Analysis of Changes to Water Quality	Amy Elliott	-	Ph.D. Aqueous Biogeochemistry Hons. B.Sc. Ecology and Evolutionary Biology	Mine water quality, contaminant transport modelling, impact and environmental assessment, environmental approvals	14	WSP

Section / Appendix	Primary Author(s)	Professional Designations	Education	Areas of Specialty	Years of Experience	Employer <sup>(1)</sup>
7.8 Analysis of Changes to Vegetation Communities	Vanessa Angevaare	P. Biol	Hons. B.Sc. Biology and Environmental and Resource Science	Wetland ecology, environmental monitoring, regulatory permitting, vegetation biologist	12	WSP
	Samantha Hughes	-	Hons. B.A. Biology, specialization in Biodiversity, Ecology, Evolution P.G.[ER] Ecosystem Restoration	Species at Risk assessment and permitting, biological surveys, environmental impact assessment, natural heritage studies and inventories	15	WSP
7.9 Analysis of Changes to Wild Rice	Samantha Hughes	-	Hons. B.A. Biology, specialization in Biodiversity, Ecology, Evolution P.G.[ER] Ecosystem Restoration	Species at Risk assessment and permitting, biological surveys, environmental impact assessment, natural heritage studies and inventories	15	WSP
7.10 Analysis of Changes to Moose 7.11 Analysis of Changes to Other Wildlife 7.12 Analysis of Changes to Species at Risk	Megan Hazell	-	M.Sc. Wildlife Biology B.Sc. Zoology	Terrestrial ecosystem and wildlife impacts assessments, permitting and approvals	25	WSP
	Samantha Hughes	-	Hons. B.A. Biology, specialization in Biodiversity, Ecology, Evolution P.G.[ER] Ecosystem Restoration	Species at Risk assessment and permitting, biological surveys, environmental impact assessment, natural heritage studies and inventories	15	WSP
7.13 Analysis of Changes to Land and Resource Use	Jennifer Owen	EP	M.Sc.Env., Environmental Management	Municipal, provincial and federal environmental and social impact assessment, sustainability, stakeholder and public engagement	15	SLR
	Vanessa Ramos	-	Hons B.E.S., Environment, Resources, and Sustainability	Environmental planning, environmental and social impact assessment, public consultation	4	SLR
7.14 Analysis of Changes to Cultural Heritage	Johanna Kelly	CAHP	M.Sc. Biological Anthropology Hons. BA Anthropology	Cultural heritage assessments	15	WSP
7.15 Analysis of Changes to Archaeology	Henry Cary	CAHP, RRPA	Ph.D. War Studies M.A. Historical Archaeology Hons BA (Pre-contact Archaeology / Anthropology)	Archaeological assessment, cultural heritage assessment; Ontario Professional Licence to Conduct Archaeological Fieldwork (P327);	25	WSP
7.16 Analysis of Changes to Local and Regional Economy	Julius Kreissig-Arnal	-	M.Sc. Spatial, Transport and Environmental Economics B.Sc. Economics	Economic impact assessment	10	WSP
<b>Section 8: Analysis of Changes to Fish and Fish Habitat</b>	Mark Ruthven	-	C.E.T. Fish and Wildlife Technology Certified Inspector of Sediment and Erosion Controls	Fish and fish habitat offsetting, compensation, restoration and permitting, approvals	33	WSP
	Jill LaPorte	-	B.Sc. Zoology Environmental Certificate Fisheries Assessment Specialist	Fish and fish habitat offsetting, compensation, restoration and permitting, approvals	20	WSP
<b>Section 9: Analysis of Changes to Migratory Birds</b>	Samantha Hughes	-	Hons. B.A. Biology, specialization in Biodiversity, Ecology, Evolution P.G.[ER] Ecosystem Restoration	Species at Risk assessment and permitting, biological surveys, environmental impact assessment, natural heritage studies and inventories	15	WSP
	Megan Hazell	-	M.Sc. Wildlife Biology B.Sc. Zoology	Terrestrial ecosystem and wildlife impacts assessments, permitting and approvals.	25	WSP

Section / Appendix	Primary Author(s)	Professional Designations	Education	Areas of Specialty	Years of Experience	Employer <sup>(1)</sup>
<b>Section 10: Analysis of Changes to Indigenous Peoples – Lac Seul First Nation</b>						
10.1 Linkages to other Valued Components 10.2 Regulatory Setting 10.3 Assessment Approach 10.4 Influence of Consultation and Engagement	Elizabeth Sherlock	P.Geo.	M.A.Sc. Mining and Environment B.Sc. Geology	Mining impact and environmental assessment and environmental approvals	25	SLR
10.5 Community Services and Infrastructure	Lindsay McDonald	-	B.A. Sociology	Social impact assessment, gender-based analysis plus	21	SLR
10.6 Current Use of Land and Resources for Traditional Purposes	Sarah Duignan	-	Ph.D. Physical and Biological Anthropology M.A. Physical and Biological Anthropology B.Sc. Anthropology	Impact assessment - socioeconomic, community health and wellbeing, and indigenous interests	12	SLR
10.7 Indigenous Physical and Cultural Heritage, and Structures, Sites or Things	Hereward Longley	-	Ph.D. Environmental History	Impact assessment – physical and cultural heritage	11	Two Worlds Consulting <sup>(3)</sup>
	Liz Robertson	-	Ph.D. Archaeology	Impact assessment – physical and cultural heritage	14	Two Worlds Consulting <sup>(3)</sup>
10.8 Community Well-being	Chantal Gougain	-	M.U.P. Masters in Urban Planning B.A. Communications & Sociology	Social impact assessment	10	SLR
10.9 Health	Lindsay McCallum	-	Ph.D. Health Impact Assessment M.Env.Sc. Environmental Science B.Sc. Biology	Health impact assessment	15	WSP
	Christine Plourde	FEC	B.Sc.Eng. Civil Engineering	Human health and ecological risk assessment	25	WSP
10.10 Impact on the Exercise or Practice of Rights	Elizabeth Sherlock	P.Geo.	M.A.Sc. Mining and Environment B.Sc. Geology	Mining impact and environmental assessment and environmental approvals	25	SLR
	Linda Boeheim	-	B.Sc. Environmental Studies	Impact assessment and Indigenous interests	30	SLR
<b>Section 11: Analysis of Changes to Indigenous Peoples – Wabauskang First Nation</b>						
11.1 Linkages to other Valued Components 11.2 Regulatory Setting 11.3 Assessment Approach 11.4 Influence of Consultation and Engagement	Elizabeth Sherlock	P.Geo.	M.A.Sc. Mining and Environment B.Sc. Geology	Mining impact and environmental assessment and environmental approvals	25	SLR
11.5 Community Services and Infrastructure	Lindsay McDonald	-	B.A. Sociology	Social impact assessment, gender-based analysis plus	21	SLR
11.6 Current Use of Land and Resources for Traditional Purposes	Sarah Duignan	-	Ph.D. Physical and Biological Anthropology M.A. Physical and Biological Anthropology B.Sc. Anthropology	Impact assessment - socioeconomic, community health and wellbeing, and indigenous interests	12	SLR

Section / Appendix	Primary Author(s)	Professional Designations	Education	Areas of Specialty	Years of Experience	Employer <sup>(1)</sup>
11.7 Indigenous Physical and Cultural Heritage, and Structures, Sites or Things	Hereward Longley	-	Ph.D. Environmental History	Impact assessment – physical and cultural heritage	11	Two Worlds Consulting <sup>(3)</sup>
11.8 Community Well-being	Chantal Gougain	-	M.U.P. Masters in Urban Planning B.A. Communications & Sociology	Social impact assessment	10	SLR
11.9 Health	Lindsay McCallum	-	Ph.D. Health Impact Assessment M.Env.Sc. Environmental Science B.Sc. Biology	Health impact assessment	15	WSP
	Christine Plourde	FEC	B.Sc.Eng. Civil Engineering	Human health and ecological risk assessment	25	WSP
11.10 Impact on the Exercise or Practice of Rights	Elizabeth Sherlock	P.Geo.	M.A.Sc. Mining and Environment B.Sc. Geology	Mining impact and environmental assessment and environmental approvals	25	SLR
	Linda Boeheim	-	B.Sc. Environmental Studies	Impact assessment and Indigenous interests	30	SLR
<b>Section 12: Analysis of Changes to Indigenous Peoples – Asubpeeschosewagong Netum Anishinabek</b>						
12.1 Linkages to other Valued Components 12.2 Regulatory Setting 12.3 Assessment Approach 12.4 Influence of Consultation and Engagement	Elizabeth Sherlock	P.Geo.	M.A.Sc. Mining and Environment B.Sc. Geology	Mining impact and environmental assessment and environmental approvals	25	SLR
12.5 Community Services and Infrastructure	Lindsay McDonald	-	B.A. Sociology	Social impact assessment, gender-based analysis plus	21	SLR
12.6 Current Use of Land and Resources for Traditional Purposes	Sarah Duignan	-	Ph.D. Physical and Biological Anthropology M.A. Physical and Biological Anthropology B.Sc. Anthropology	Impact assessment - socioeconomic, community health and wellbeing, and indigenous interests	12	SLR
12.7 Indigenous Physical and Cultural Heritage, and Structures, Sites or Things	Hereward Longley	-	Ph.D. Environmental History	Impact assessment – physical and cultural heritage	11	Two Worlds Consulting <sup>(3)</sup>
12.8 Community Well-being	Chantal Gougain	-	M.U.P. Masters in Urban Planning B.A. Communications & Sociology	Social impact assessment	10	SLR
12.9 Health	Lindsay McCallum	-	Ph.D. Health Impact Assessment M.Env.Sc. Environmental Science B.Sc. Biology	Health impact assessment	15	WSP
	Christine Plourde	FEC	B.Sc.Eng. Civil Engineering	Human health and ecological risk assessment	25	WSP
12.10 Impact on the Exercise or Practice of Rights	Elizabeth Sherlock	P.Geo.	M.A.Sc. Mining and Environment B.Sc. Geology	Mining impact and environmental assessment and environmental approvals	25	SLR
	Linda Boeheim	-	B.Sc. Environmental Studies	Impact assessment and Indigenous interests	30	SLR

Section / Appendix	Primary Author(s)	Professional Designations	Education	Areas of Specialty	Years of Experience	Employer <sup>(1)</sup>
<b>Section 13: Analysis of Changes to Indigenous Peoples – Northwestern Ontario Métis Community</b>						
13.1 Linkages to other Valued Components 13.2 Regulatory Setting 13.3 Assessment Approach 13.4 Influence of Consultation and Engagement	Elizabeth Sherlock	P.Geo.	M.A.Sc. Mining and Environment B.Sc. Geology	Mining impact and environmental assessment and environmental approvals	25	SLR
13.5 Community Services and Infrastructure	Lindsay McDonald	-	B.A. Sociology	Social impact assessment, gender-based analysis plus	21	SLR
13.6 Current Use of Land and Resources for Traditional Purposes	Sarah Duignan	-	Ph.D. Physical and Biological Anthropology M.A. Physical and Biological Anthropology B.Sc. Anthropology	Impact assessment - socioeconomic, community health and wellbeing, and indigenous interests	12	SLR
13.7 Indigenous Physical and Cultural Heritage, and Structures, Sites or Things	Hereward Longley	-	Ph.D. Environmental History	Impact assessment – physical and cultural heritage	11	Two Worlds Consulting <sup>(3)</sup>
13.8 Community Well-being	Chantal Gougain	-	M.U.P. Masters in Urban Planning B.A. Communications & Sociology	Social impact assessment	10	SLR
13.9 Health	Lindsay McCallum	-	Ph.D. Health Impact Assessment M.Env.Sc. Environmental Science B.Sc. Biology	Health impact assessment	15	WSP
	Christine Plourde	FEC	B.Sc.Eng. Civil Engineering	Human health and ecological risk assessment	25	WSP
13.10 Impact on the Exercise or Practice of Rights	Elizabeth Sherlock	P.Geo.	M.A.Sc. Mining and Environment B.Sc. Geology	Mining impact and environmental assessment and environmental approvals	25	SLR
	Linda Boenheim	-	B.Sc. Environmental Studies	Impact assessment and Indigenous interests	30	SLR
<b>Section 14: Analysis of Changes to Indigenous Peoples – Red Lake and Ear Falls</b>						
14.1 Linkages to other Valued Components 14.2 Regulatory Setting 14.3 Assessment Approach 14.4 Influence of Consultation and Engagement	Elizabeth Sherlock	P.Geo.	M.A.Sc. Mining and Environment B.Sc. Geology	Mining impact and environmental assessment and environmental approvals	25	SLR
14.5 Community Services and Infrastructure	Lindsay McDonald	-	B.A. Sociology	Social impact assessment, gender-based analysis plus	21	SLR
14.6 Current Use of Land and Resources for Traditional Purposes	Sarah Duignan	-	Ph.D. Physical and Biological Anthropology M.A. Physical and Biological Anthropology B.Sc. Anthropology	Impact assessment - socioeconomic, community health and wellbeing, and indigenous interests	12	SLR
14.7 Indigenous Physical and Cultural Heritage, and Structures, Sites or Things	Sarah Duignan	-	Ph.D. Physical and Biological Anthropology M.A. Physical and Biological Anthropology B.Sc. Anthropology	Impact assessment - socioeconomic, community health and wellbeing, and indigenous interests	12	SLR

Section / Appendix	Primary Author(s)	Professional Designations	Education	Areas of Specialty	Years of Experience	Employer <sup>(1)</sup>
14.8 Community Well-being	Chantal Gougain	-	M.U.P. Masters in Urban Planning B.A. Communications & Sociology	Social impact assessment	10	SLR
14.9 Health	Lindsay McCallum	-	Ph.D. Health Impact Assessment M.Env.Sc. Environmental Science B.Sc. Biology	Health impact assessment	15	WSP
	Christine Plourde	FEC	B.Sc.Eng. Civil Engineering	Human health and ecological risk assessment	25	WSP
14.10 Impact on the Exercise or Practice of Rights	Elizabeth Sherlock	P.Geo.	M.A.Sc. Mining and Environment B.Sc. Geology	Mining impact and environmental assessment and environmental approvals	25	SLR
	Linda Boeheim	-	B.Sc. Environmental Studies	Impact assessment and Indigenous interests	30	SLR
<b>Section 15: Cumulative Effects Assessment</b>	Sheila Daniel	P.Geo.	M.Sc. Physical Geography Hons. B.Sc. Physical Geography	Mining impact assessments, environmental assessments, and permits and approvals	35	WSP
	Samantha Hughes	-	Hons. B.A. Biology, specialization in Biodiversity, Ecology, Evolution P.G.[ER] Ecosystem Restoration	Species at Risk assessment and permitting, biological surveys, environmental impact assessment, natural heritage studies and inventories	15	WSP
	Leah Klaassen	-	Hons. B.Sc. Forestry and Environmental Science Grad. Cert. Environmental Management	Mining environmental assessment and approvals	6	WSP
	Linda Boeheim	-	B.Sc. Environmental Studies	Impact assessment and Indigenous interests	30	SLR
	Mandy Gregg	EP	Hons. B.Sc. Geology, Carleton University B.A. Laws, Carleton University (partial completion)	Mining impact and environmental assessment and environmental approvals	20	SLR
<b>Section 16: Effects of Potential Accidents and Malfunctions</b>	Heather Lindsay	P.Eng.	M.Sc. Civil Engineering B.Sc.E. Civil Engineering (Environmental)	Mining impact and environmental assessments, closure specialist and environmental approvals	20	WSP
<b>Section 17: Effects of the Environment on the Project</b>	Sheila Daniel	P.Geo.	M.Sc. Physical Geography Hons. B.Sc. Physical Geography	Mining impact assessments, environmental assessments, and permits and approvals	35	WSP
	Janya Kelly	-	Ph.D. Earth and Space Science Hons. B.Sc. Physics	Climate dataset development, climate change resilience, climate change risk assessment,	15	WSP
	Dan Humphrey	PMP	MES Environment and Sustainability B.Sc. of Bio-Resource Management (Environmental Management)	Climate risk and resilience, greenhouse gas emissions. Sustainability	8	WSP
<b>Section 18: Summary of Benefits</b>	Sheila Daniel	P.Geo.	M.Sc. Physical Geography Hons. B.Sc. Physical Geography	Mining impact assessments, environmental assessments, and permits and approvals	35	WSP
<b>Section 19: Environmental Approval Framework and Requirements</b>	Sheila Daniel	P.Geo.	M.Sc. Physical Geography Hons. B.Sc. Physical Geography	Mining impact assessments, environmental assessments, and permits and approvals	35	WSP
<b>Section 20: Environmental and Social, Management and Follow-up</b>	Sheila Daniel	P.Geo.	M.Sc. Physical Geography Hons. B.Sc. Physical Geography	Mining impact assessments, environmental assessments, and permits and approvals	35	WSP
	Mark Ruthven	-	C.E.T. Fish and Wildlife Technology Certified Inspector of Sediment and Erosion Controls	Fish and fish habitat offsetting, compensation, restoration and permitting, approvals	33	WSP

Section / Appendix	Primary Author(s)	Professional Designations	Education	Areas of Specialty	Years of Experience	Employer <sup>(1)</sup>
<b>Section 21: Conclusions</b>	Sheila Daniel	P.Geo.	M.Sc. Physical Geography Hons. B.Sc. Physical Geography	Mining impact assessments, environmental assessments, and permits and approvals	35	WSP
<b>Section 22: Authors and Qualifications</b>	Leah Klaassen	-	Hons. B.Sc. Forestry and Environmental Science Grad. Cert. Environmental Management	Mining environmental assessment and approvals	6	WSP
<b>Geographic Information Systems Lead for Impact Statement</b>	Monica Deveau	-	B.E.S, Geomatics	Geographic information systems	16	WSP
<b>APPENDICES <sup>(4)</sup></b>						
A-2: Concordance Table for Impact Statement to the Tailored Impact Statement Guidelines	Sheila Daniel	P.Geo.	M.Sc. Physical Geography Hons. B.Sc. Physical Geography	Mining impact assessments, environmental assessments, and permits and approvals	35	WSP
	Elizabeth Sherlock	P.Geo.	M.A.Sc. Mining and Environment B.Sc. Geology	Mining impact and environmental assessment and environmental approvals	25	SLR
B-1: Impact Statement Commitments	Leah Klaassen	-	Hons. B.Sc. Forestry and Environmental Science Grad. Cert. Environmental Management	Mining environmental assessment and approvals	6	WSP
C: Record of Consultation	Jennifer Owen	EP	M.Sc.Env., Environmental Management	Municipal, provincial and federal environmental and social impact assessment, sustainability, engagement	15	SLR
	Vanessa Ramos	-	B.E.S Environment, Resources, and Sustainability	Environmental planning, environmental and social impact assessment, public consultation	4	SLR
D-1: Air Quality Baseline Report	Ryan Fletcher	P.Eng.	B.Eng. Environmental Engineering	Ambient air monitoring	14	WSP
D-2: Air Quality Modelling Report	Caleb Vandenberg	P.Eng.	B.Eng. Environmental Engineering G.Dip. Climate Risk Management	Predictive air quality assessments, greenhouse gases	14	WSP
D-3: Greenhouse Gas Assessment	Ellen Marejka	EIT	M.E.Sc. Wind Engineering B.Eng. Environmental Engineering	Predictive air quality assessments, greenhouse gases	4	WSP
	Mano Narayanan	P.Eng.	B.A.Sc. Civil / Environmental Engineering	Predictive air quality assessments, greenhouse gases	22	WSP
	Linda Lattner	P.Eng.	M.Eng. Chemical Engineering B.Eng. Chemical Engineering	Net-zero and BAT BEP	25	WSP
E-1: Sound and Vibration Baseline Report (Leaves On)	Carlos Yoong	P.Eng.	Ph.D. Mechanical Engineering B.Eng. Mechanical Engineering	Assessments of acoustics, noise, vibration, structural dynamics including impact mitigation investigation	14	Wood <sup>(2)</sup>
E-2: Sound and Vibration Baseline Report (Leaves Off)	Carlos Yoong	P.Eng.	Ph.D. Mechanical Engineering B.Eng. Mechanical Engineering	Assessments of acoustics, noise, vibration, structural dynamics including impact mitigation investigation	14	Wood <sup>(2)</sup>
E-3: Noise Modelling Report	Carlos Yoong	P.Eng.	Ph.D. Mechanical Engineering B.Eng. Mechanical Engineering	Assessments of acoustics, noise, vibration, structural dynamics including impact mitigation investigation	14	Wood <sup>(2)</sup>
	Henrik Olsen	INCE Bd. Cert ASA Member	M.Sc. Mechanical Engineering	Environmental noise and vibration assessments, mitigation assessments and recommendation and field measurements	25	Wood <sup>(2)</sup>

Section / Appendix	Primary Author(s)	Professional Designations	Education	Areas of Specialty	Years of Experience	Employer <sup>(1)</sup>
F: Blasting Vibration and Overpressure Modelling Report	Carlos Yoong	P.Eng.	Ph.D. Mechanical Engineering B.Eng. Mechanical Engineering	Assessments of acoustics, noise, vibration, structural dynamics including impact mitigation investigation	14	Wood <sup>(2)</sup>
	Henrik Olsen	INCE Bd. Cert ASA Member	M.Sc. Mechanical Engineering	Environmental noise and vibration assessments, mitigation assessments and recommendation and field measurements	25	Wood <sup>(2)</sup>
G: Night-time Light Baseline and Predictive Light Assessment	Ryan Fletcher	P.Eng.	B.Eng. Environmental Engineering	Ambient monitoring and light monitoring	14	WSP
H-1: Hydrogeology Baseline Report	Simon Gautrey	P.Geo.	MBA M.Sc. Hydrogeology B.Sc. Geology	Hydrogeologist specializing in groundwater projects related to mining and groundwater resource assessments.	30	WSP
H-2: Hydrogeological Modelling Report	Simon Gautrey	P.Geo.	MBA M.Sc. Hydrogeology B.Sc. Geology	Hydrogeologist specializing in groundwater projects related to mining and groundwater resource assessments.	30	WSP
	Keenan Lamb	P.Eng.	M.Sc.E. Civil Engineering (Hydrogeology)	Groundwater modelling, physical hydrogeology	10	WSP
I-1: Hydrology Baseline Report	Mei Ling Tamkei	P.Eng.	B.Sc. Environmental Engineering	Hydrology, water balance modelling	12	WSP
I-2: Mine Site Water Balance Report	Mei Ling Tamkei	P.Eng.	B.Sc. Environmental Engineering	Hydrology, water balance modelling	12	WSP
I-3: Receiver Water Balance Report	Mei Ling Tamkei	P.Eng.	B.Sc. Environmental Engineering	Hydrology, water balance modelling	12	WSP
J: Geochemistry Summary Report	Kristen Gault	P.Geo.	M.Sc. Earth Sciences B.Sc. Honours Environmental Science with Geochemistry Specialization	Mine waste and water quality management, geochemical modelling, metal leaching / acid rock drainage	15	WSP
K-1: Water Quality Baseline Report	Amy Elliott	-	Ph.D. Aqueous Biogeochemistry Hons. B.Sc. Ecology and Evolutionary Biology	Water quality, contaminant transport modelling, mining impact and environmental assessment, environmental approvals	14	WSP
K-2: Mine Site Water Quality Modelling Report	Kristen Gault	P.Geo.	M.Sc. Earth Sciences B.Sc. Honours Environmental Science with Geochemistry Specialization	Mine waste and water quality management, geochemical modelling, metal leaching / acid rock drainage	15	WSP
K-3: Receiver Water Quality Modelling Report	Amy Elliott	-	Ph.D. Aqueous Biogeochemistry Hons. B.Sc. Ecology and Evolutionary Biology	Water quality, contaminant transport modelling, mining impact and environmental assessment, environmental approvals	14	WSP
L-1: Fisheries Resources Baseline Report	Mark Ruthven	-	C.E.T. Fish and Wildlife Technology Certified Inspector of Sediment and Erosion Controls	Fish and fish habitat offsetting, compensation, restoration and permitting, approvals	33	WSP
L-2: Draft <i>Fisheries Act</i> Offset Plan and MDMER Schedule 2 Fish Habitat Compensation Plan	Mark Ruthven	-	C.E.T. Fish and Wildlife Technology Certified Inspector of Sediment and Erosion Controls	Fish and fish habitat offsetting, compensation, restoration and permitting, approvals	33	WSP
	Jill LaPorte	-	B.Sc. Zoology Environmental Certificate Fisheries Assessment Specialist	Fish and fish habitat offsetting, compensation, restoration and permitting, approvals	20	WSP

Section / Appendix	Primary Author(s)	Professional Designations	Education	Areas of Specialty	Years of Experience	Employer <sup>(1)</sup>
M-1: Terrestrial Resources Baseline Report	Robert Foster	-	Ph.D. Zoology H.B.Sc. Biology	Terrestrial ecology	35	Northern Bioscience
M-2: Terrestrial Technical Methods and Results	Samantha Hughes	-	Hons. B.A. Biology, specialization in Biodiversity, Ecology, Evolution P.G.[ER] Ecosystem Restoration	Species at Risk assessment and permitting, biological surveys, environmental impact assessment, natural heritage studies and inventories	15	WSP
N-1: Human Health and Ecological Risk Assessment	Christine Plourde	FEC	B.Sc.Eng. Civil Engineering	Human health and ecological risk assessment	25	WSP
	Karl Bresee	RP Biol., P.Biol., QP <sub>SASK</sub>	B.Sc. Zoology / Animal Biology M.Sc. Ecotoxicology PBD Ecotoxicology	Human health and ecological risk assessment	20	WSP
N-2: Health Impact Assessment	Lindsay McCallum	-	Ph.D. Health Impact Assessment M.Env.Sc. Environmental Science B.Sc. Biology	Health impact assessment	15	WSP
O-1: Socioeconomic Baseline Report	Ian LaPlante	-	M.A.	Social sciences and engagement	-	WSP
O-2: Economic Modelling Results	Julius Kreissig-Arnal	-	M.Sc. Spatial, Transport and Environmental Economics B.Sc. Economics	Economic impact assessment	10	WSP
O-3: Viewshed Analysis	Kenneth Brookes	-	M.Sc. Geographic Information Science Hons. B.A. Geography	Advanced geospatial analytics and visualization, geographic information systems	18	WSP
P-1: Cultural Heritage Report: Existing Conditions and Preliminary Impact Assessment	Johanna Kelly	CAHP	M.Sc. Biological Anthropology Hons. BA Anthropology	Cultural heritage assessments	15	WSP
P-2: Cultural Heritage Evaluation Report Manoomin Field between Unnamed Waterbodies 1 and 2	Johanna Kelly	CAHP	M.Sc. Biological Anthropology Hons. B.A. Anthropology	Cultural heritage assessments	15	WSP
P-3 Cultural Heritage Impact Assessment Report: Manoomin Field between Unnamed Waterbodies 1 and 2	Johanna Kelly	CAHP	M.Sc. Biological Anthropology Hons. B.A. Anthropology	Cultural heritage assessments	15	WSP
Q-1: Terrestrial Archaeology Assessments	Andrew Hinshelwood	CAHP	Ph.D. Public Policy M.A. Historical Geography B.A. Anthropology	Archaeological assessments and policy, lithic analysis	46	Northwest Archaeological Assessments
Q-2: Marine Archaeological Assessment	Emilie Teasdale	-	M.Sc. Anthropology (Maritime Archaeology) B.Sc. Anthropology (Archaeology)	Marine archaeological assessment; Licenced to Carry Out Marine Archaeological Fieldwork (2025-11)	7	WSP
R: Assessment of Alternatives for Storage of Mine Waste	Heather Lindsay	P.Eng.	M.Sc. Civil Engineering B.Sc.E. Civil Engineering (Environmental)	Mining impact and environmental assessments, and environmental approvals	20	WSP
S: Preliminary Closure Plan for Impact Statement	Heather Lindsay	P.Eng.	M.Sc. Civil Engineering B.Sc.E. Civil Engineering (Environmental)	Mining impact and environmental assessments, and environmental approvals	20	WSP
	Amy Elliott	-	Ph.D. Aqueous Biogeochemistry Hons. B.Sc. Ecology and Evolutionary Biology	Mine water quality, contaminant transport modelling, impact and environmental assessment, environmental approvals	14	WSP

Section / Appendix	Primary Author(s)	Professional Designations	Education	Areas of Specialty	Years of Experience	Employer <sup>(1)</sup>
T: Mercury Bioaccumulation Study for Downstream English River to Wabigoon System Waterbodies	Christine Plourde	-	B.Sc.Eng. Civil Engineering	Human health and ecological risk assessment	25	WSP
	Karl Bresee	RP Biol., P.Biol., QP <sub>SASK</sub>	B.Sc. Zoology / Animal Biology M.Sc. Ecotoxicology PBD Ecotoxicology	Human health and ecological risk assessment	20	WSP
U-1: Tailings Inundation Study	Rebecca Staring	P.Eng.	B.A.Sc. Environmental Engineering	Water resources engineering, mine water management	9	WSP
U-2: Draft Spill Prevention and Contingency Plan	Ashley Moncrief	EP	B. Eng Technologies Natural Resource Law Enforcement Fish and Wildlife Technologies Fish and Wildlife Technician	Environmental management, Environmental Assessments, regulatory compliance, environmental protection, operational risk mitigation, risk assessment, Emergency Response (surface / spill response - member 10+ years), and SPCP Internal Auditor	15	Great Bear Resources
V: Navigable Water Assessment Information	Sheila Daniel	P.Geo.	M.Sc. Physical Geography Hons. B.Sc. Physical Geography	Mining impact assessments, environmental assessments, and permits and approvals	35	WSP
W-1: Net-zero Plan	Ellen Marejka	EIT	M.E.Sc. Wind Engineering B.Eng. Environmental Engineering	Predictive air quality assessments, greenhouse gases	4	WSP
	Linda Lattner	P.Eng.	M.Eng. Chemical Engineering B.Eng. Chemical Engineering	Net-Zero and BAT BEP	25	WSP
W-2: Best Available Technologies / Best Environmental Practices Determination	Ellen Marejka	EIT	M.E.Sc. Wind Engineering B.Eng. Environmental Engineering	Predictive air quality assessments, greenhouse gases	4	WSP
	Linda Lattner	P.Eng.	M.Eng. Chemical Engineering B.Eng. Chemical Engineering	Net-Zero and BAT BEP	25	WSP
W-3: Detailed Climate Change Dataset	Janya Kelly	-	Ph.D. Earth and Space Science Hons. B.Sc. Physics	Climate dataset development, climate change resilience, climate change risk assessment, environmental assessments	15	WSP
W-4: Climate Risk and Resilience Report	Janya Kelly	-	Ph.D. Earth and Space Science Hons. B.Sc. Physics	Climate dataset development, climate change resilience, climate change risk assessment, environmental assessments	15	WSP
W-5: Climate Change Roadmap	Dan Humphrey	PMP	MES Environment and Sustainability B.Sc. of Bio-Resource Management (Environmental Management)	Climate risk and resilience, greenhouse gas emissions. Sustainability	8	WSP
X: GBA+ Identification of Vulnerable Groups	Lindsey McDonald	-	B.A. Sociology	Social impact assessment, gender-based analysis plus	21	SLR
Y: MNR Class EA Screening Criteria Information Locations	Sheila Daniel	P.Geo.	M.Sc. Physical Geography Hons. B.Sc. Physical Geography	Mining impact assessments, environmental assessments, and permits and approvals	35	WSP

- Notes:
1. At time of section or report preparation.
  2. Subconsultant to WSP.
  3. Subconsultant to SLR.
  4. Author information provided for Impact Statement appendix authors, including modelling and similar reports prepared for the Impact Statement. Authors for baseline reports and similar, are presented in the individual reports.