

Federal impact assessment of the Mont Sorcier Mining Project

PUBLIC INFORMATION SESSION, JUNE 2023



Impact Assessment
Agency of Canada

Agence d'évaluation
d'impact du Canada



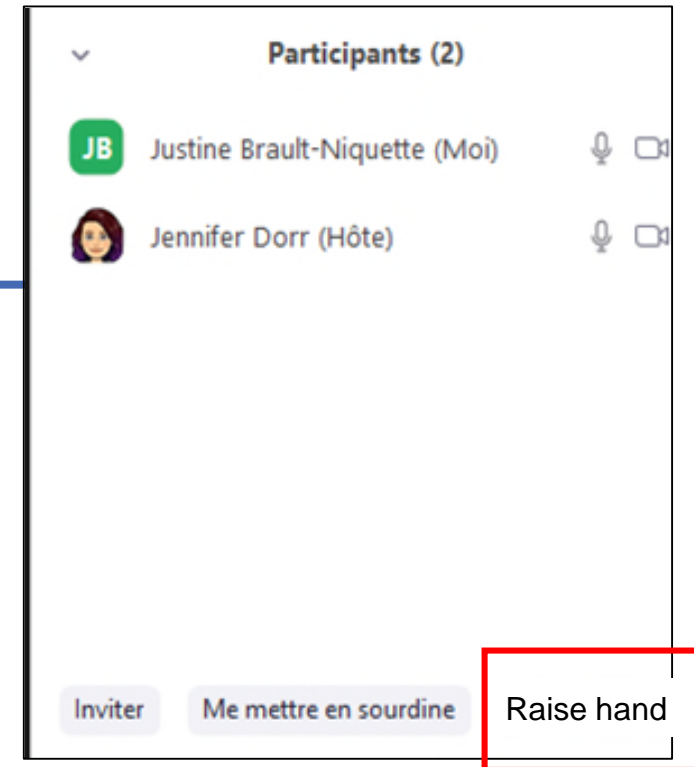
ᐱᓄᐅᐃᐃᐃᐃᐃᐃ ᐃᐅᐅᐅᐅᐅᐅᐅᐅ ᐅ ᐃᐅᐅᐅᐅᐅᐅᐅ (ᐃᐅᐅᐅ ᐅᐅᐅ)
Grand Council of the Crees (Eeyou Istchee)
Grand Conseil des Cris (Eeyou Istchee)

ᐃᐅᐅ ᐅᐅᐅᐅᐅᐅᐅ
Cree Nation Government
Gouvernement de la Nation Crie

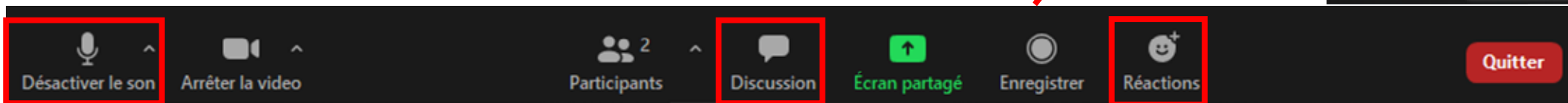
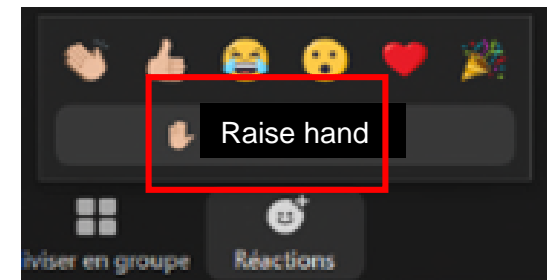
Canada

Ask a question

- Click on the "raise hand" function or type the question in the chat box.
- If you join the session by phone, press *9 to ask a question.
- Please mute your microphone if you are not speaking.



OR



Session overview

1. Federal impact assessment process
2. Mont Sorcier Mining Project
3. Public participation
4. Question period and discussion

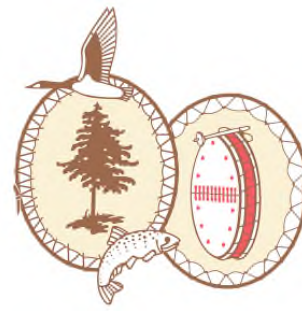


1. The federal impact assessment process

IMPACT ASSESSMENT ACT AND CREATION OF A JOINT ASSESSMENT COMMITTEE



Who evaluates the project?



Impact Assessment
Agency of Canada

- A **Joint Assessment Committee**, formed by the Impact Assessment Agency of Canada and the Cree Nation Government, is carrying out the project's impact assessment:
 - The Agency is a **federal agency** reporting to the Minister of the Environment and Climate Change.
 - The Cree Nation Government exercises governmental and administrative functions on behalf of the **Cree Nation of Eeyou Istchee**.

Why are we evaluating the project at the federal level?

- Projects listed in the *Physical Activities Regulations* (project list) may require a federal impact assessment.
- The Mont Sorcier mining project meets the criteria set out in the *Physical Activities Regulations*.
 - Metal mine producing over 5,000 tonnes per day
 - Metallurgical plant with an intake capacity of over 5,000 tons per day

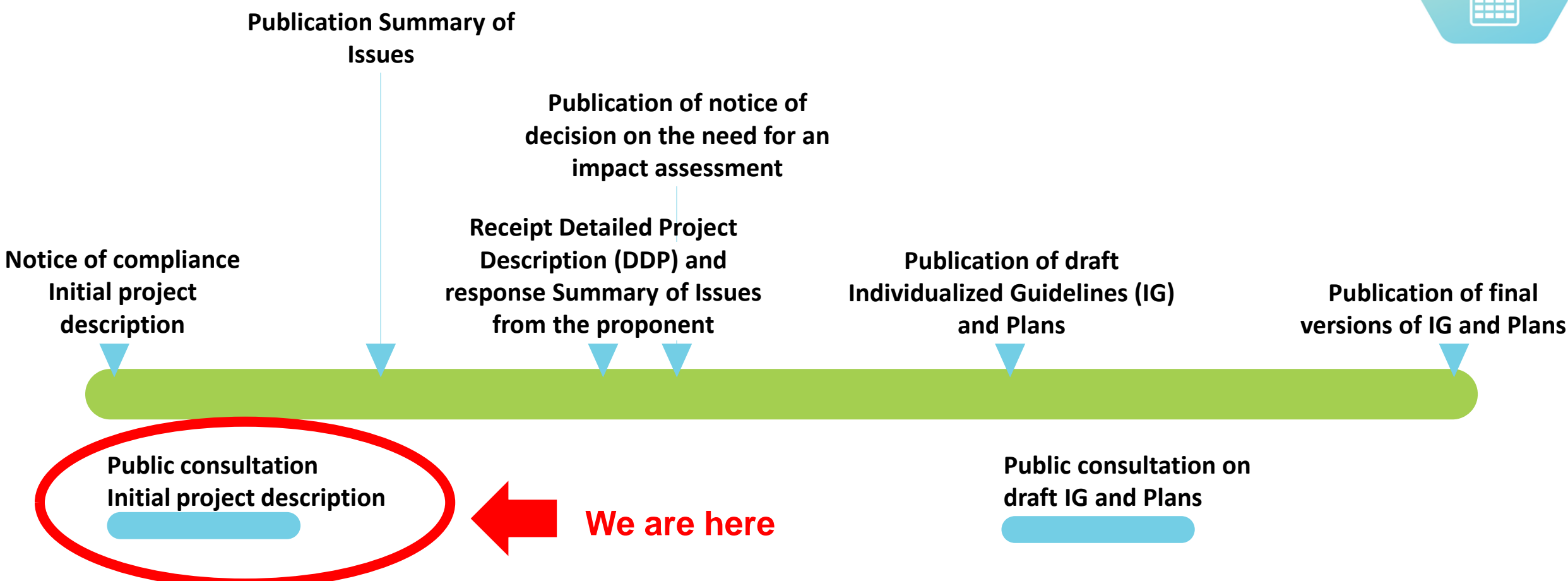
Examples of projects subject to the Agency's federal impact assessment

- Ports
- Roads
- Dams
- Mines

The 5 steps of the federal impact assessment process



Step 1 of the federal impact assessment process



2. The Mont Sorcier Mining Project of Voyager Metals Inc.

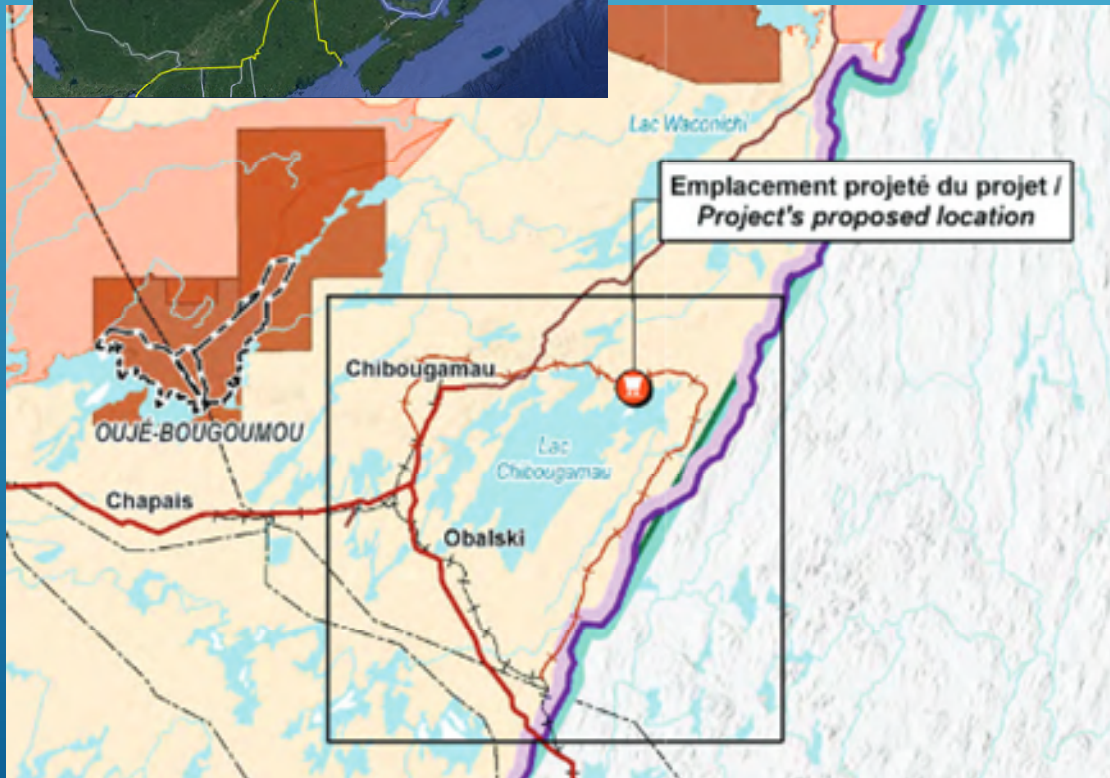
THE PROJECT UNDER STUDY



Mont Sorcier Mining Project - Voyager Metals Inc.

The project under study

Mont Sorcier Mining Project



What? A high grade iron mine including vanadium with an average production of 13,700 tons per day

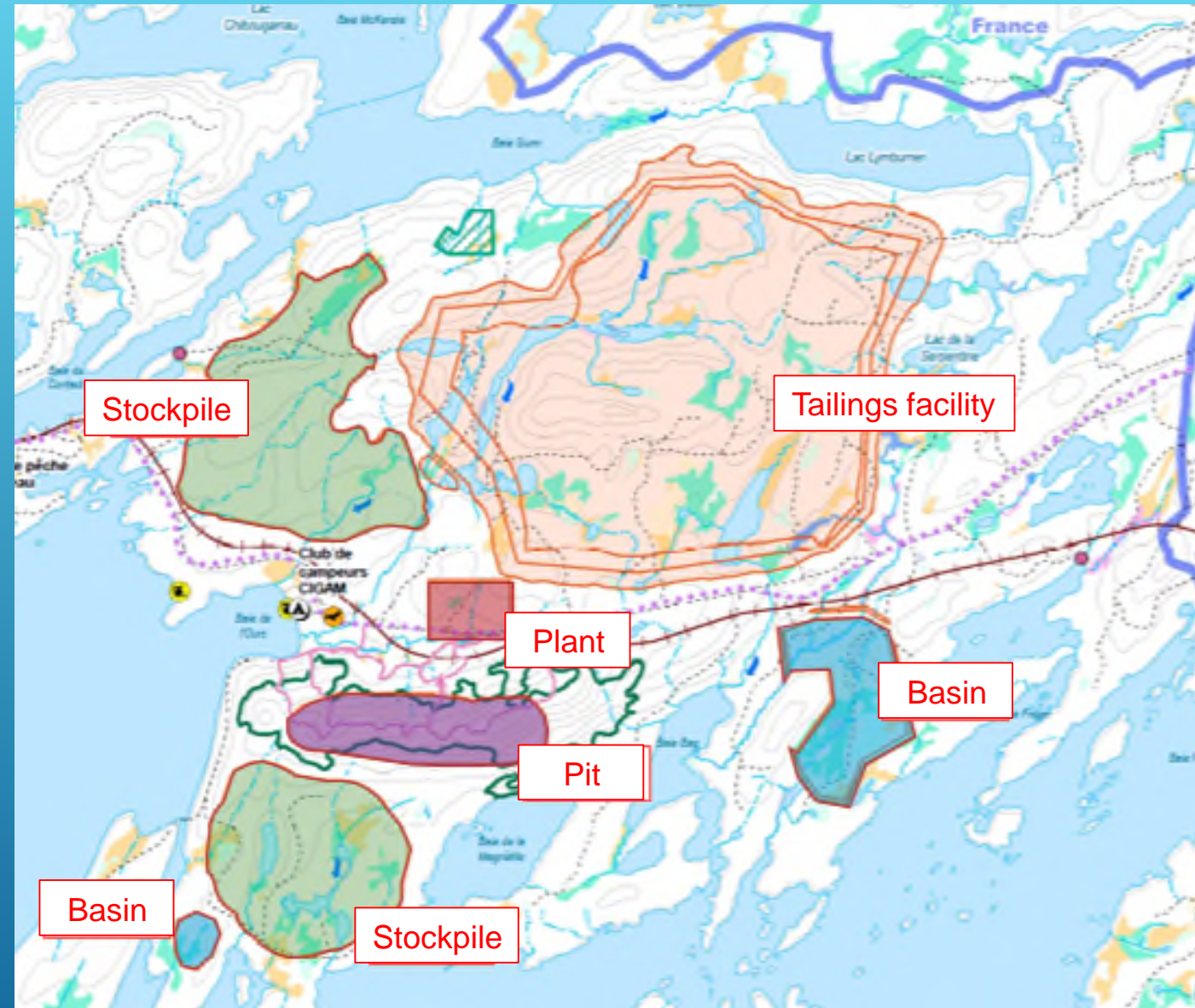
Where? About 20 km from downtown Chibougamau

Who? Voyager Metals Inc.

Duration? 21 years

Project Overview

- **Infrastructure**
 - Open pit mining
 - Construction of a tailings facility and waste rock and overburden storage areas
 - Ore processing plant



Project Components



Activities :

- Construction of a new rail spur (approx. 49 km)
- Transportation of iron vanadium concentrate on existing rail network

Jobs :

- Job creation during the construction and operation phases



Questions about the project?

Robert Girardin
Project Manager
Voyager Metals Inc.

rgirardin@voyagermetals.com
418-965-1764

<https://montsorcierproject.com/fr/>

3. Public participation

WHY AND HOW TO TAKE PART IN AN IMPACT ASSESSMENT?



Why should I participate?

CONTRIBUTE

- Opportunity to **contribute to the planning of the project**, which is likely to have an impact on you and your community.

IDENTIFY, PREVENT, MITIGATE

- Help **identify, prevent or mitigate potential adverse effects** by sharing your knowledge about your environment, organization or community

LIGHTING

- **Influence the impact assessment process** and resulting decisions

What we want to know

- What's your **interest** in the project?
- Do you have any **concerns**?
- What **effects (positive or negative)** might the project have on you or your community?
- Which project components require **analysis**?
- Do you have any suggestions for **sources of information** that could help us carry out the Impact Statement?
- What are the **best ways to reach you**?
- Are there any **economic, technical or linguistic challenges** that might prevent you from participating?

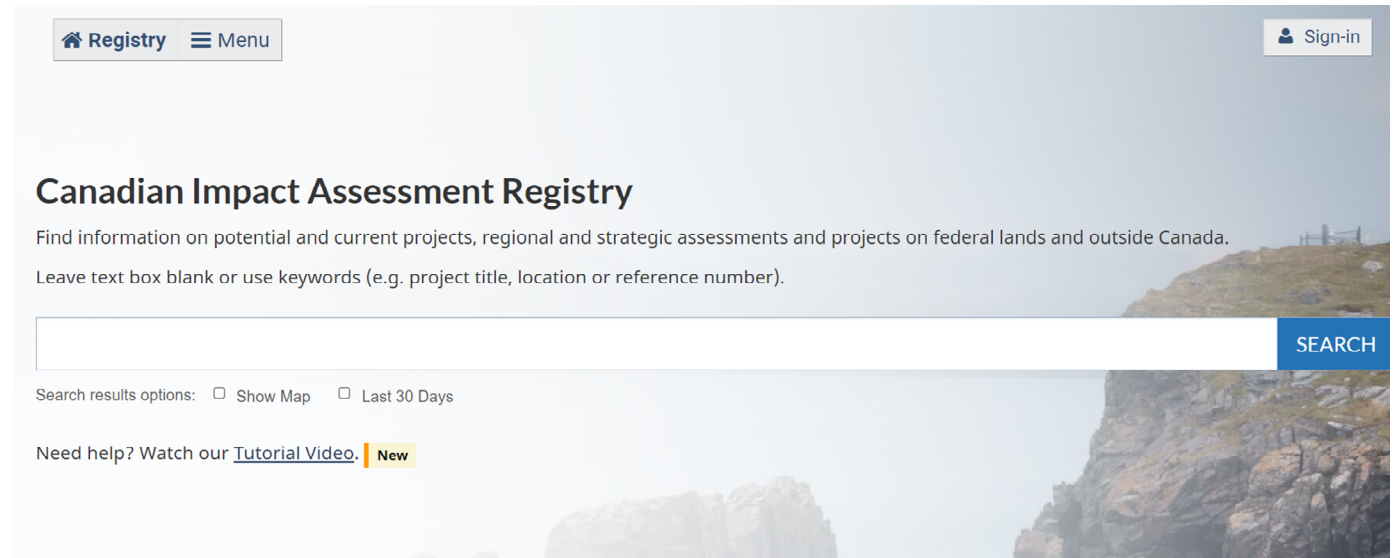


Images from "The Noun Project", October 2019

How to get involved

On the Registry website:

- Access a wealth of project information, such as published documents, comments received, analyses and decisions.
- Submit your comments directly using the "**Submit a comment**" function



Participant Funding Program

Who is eligible?

- Individuals;
- non-profit organizations;
- communities;
- Indigenous organizations.

**Application deadline:
July 21, 2023**

For any questions or to fill out an application, Contact:

The Participant Funding Program
Impact Assessment Agency of Canada

Phone: 1-866-582-1884

E-mail: fp-paf@aeic-iaac.gc.ca



Next steps

FEDERAL IMPACT ASSESSMENT FOR THE MONT SORCIER MINING PROJECT



Next steps

Date	Step
July 24, 2023	Publication of the Summary of Issues
Summer-Fall 2023	Receipt Detailed Project Description (DDP) and response to the proponent's Summary of Issues
Summer-Fall 2023	Decision on the need for an impact assessment
Summer-Fall 2023	Public consultation on draft individual guidelines and plans



Questions/comments?

Deadlines:

- Submit a comment:
July 14th, 2023
- Apply for Funding Program:
July 21st, 2023

*Please do not hesitate to contact us through the Registry or by email at any time during the impact assessment process.

Contact information :

Impact Assessment Agency of Canada

Caroline Chartier

Project Manager

Impact Assessment Agency of Canada

418-563-2268

montsorcier@iaac-aeic.gc.ca

Media relations

Media@iaac-aeic.gc.ca

Cree Nation Government

Eva-Maria Hanchar

Cree Nation Government

514-861-5837 ext. 1164

Eva-Maria.Hanchar@cngov.ca

