

May 17, 2021
Our File: WEC-049L

Mr. Steve Chapman
Chief Science and Knowledge Officer
Impact Assessment Agency of Canada
160 Elgin Street, 22nd Floor
Ottawa, ON K1A 0H3

Steve.Chapman@Canada.ca

Sent via email

Re: Additional Information in Support of Western Energy Corridor Inc.'s Request for
a Regional Assessment to the Impact Assessment Agency of Canada (IAAC)

Dear Mr. Chapman:

We appreciate receiving the letter from Minister Jonathon Wilkinson dated April 22, 2021, acknowledging our Regional Assessment request and for the subsequent meetings held with IAAC. In support of our initial request, we are providing the attached map, which illustrates the planning corridor that we propose to be the subject of a Regional Assessment.

We look forward to your response and to continuing discussions with IAAC regarding a Regional Assessment. We believe that a Regional Assessment will provide a comprehensive analysis of potential impacts that may result from future development within this corridor.

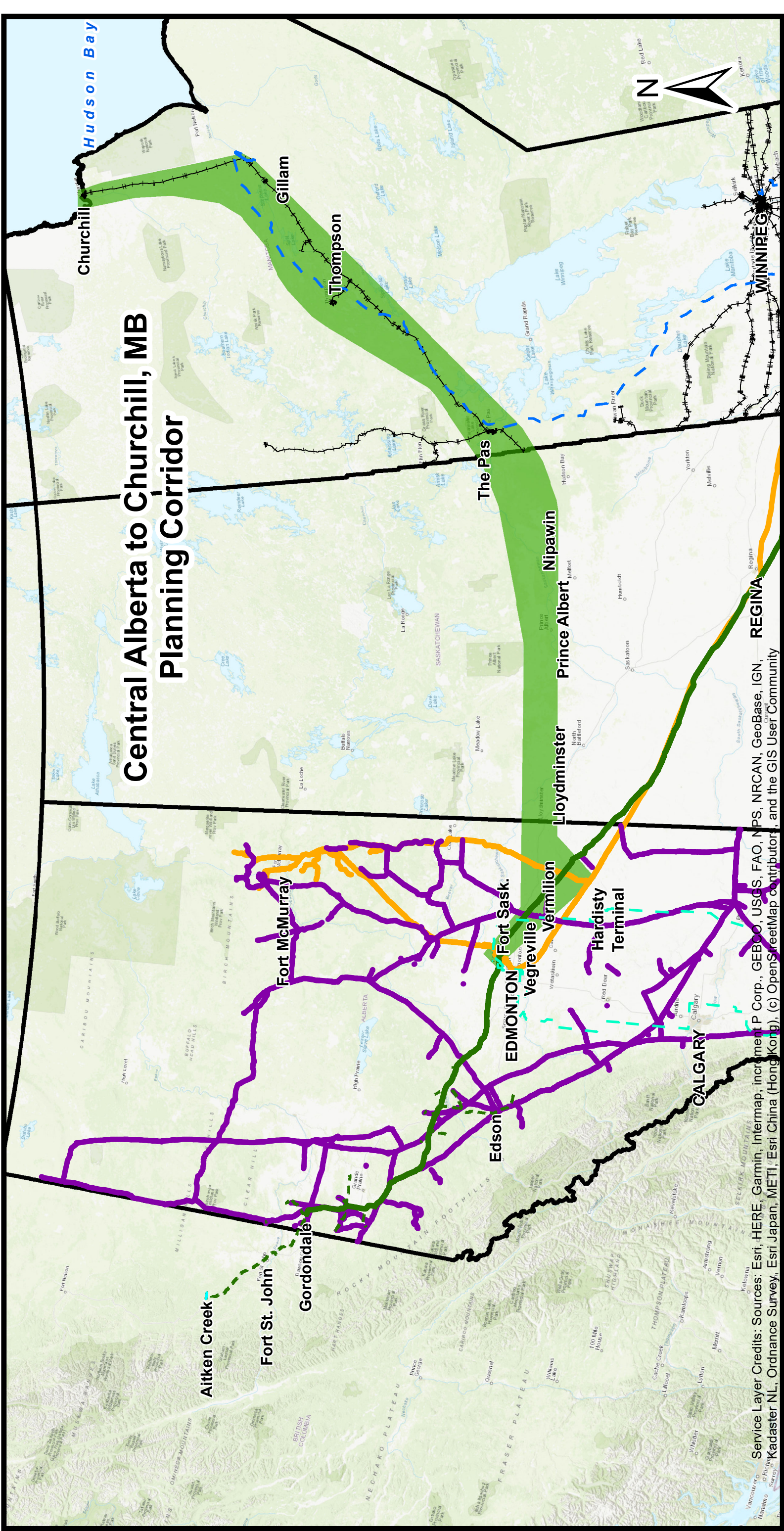
Yours very truly,
Western Energy Corridor Inc.

<original signed by>

Barry Singleton, P. Eng.
Director
Barry.Singleton@WesternEnergyCorridor.ca

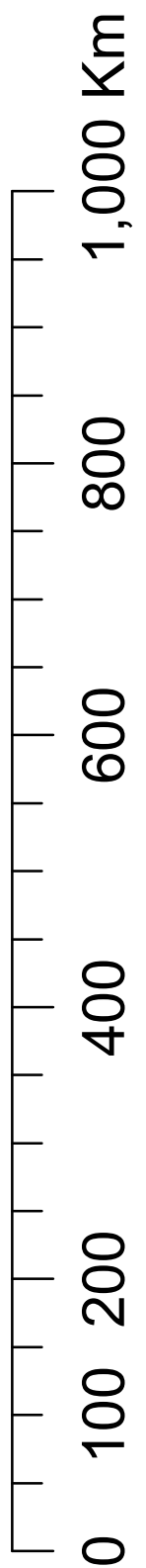
Attachment: **WEC Planning Corridor Map**

c.c.: Impact Assessment Agency
iaac.information.aeic@canada.ca



LEGEND

- Alliance Mainline
- Alliance Laterals
- - - AESO 500 kV Line
- NOVA Pipelines >= 16" O.D.
- Enbridge
- - - Bipole III Line



Coordinate System: Canada Lambert Conformal Conic
 Projection: Lambert Conformal Conic
 Datum: North American 1983
 False Easting: 0.0000
 False Northing: 0.0000
 Central Meridian: -96.0000
 Standard Parallel 1: 50.0000
 Standard Parallel 2: 70.0000
 Latitude Of Origin: 40.0000
 Units: Meter

Service Layer Credits: Sources: Esri, HERE, Garmin, Intermap, increment P Corp., GEBCO, USGS, FAO, NPS, NRCAN, GeoBase, IGN, REGINA, Kadaster NL, Ordnance Survey, Esri Japan, METI, Esri China (HongKong), and the GIS User Community