

August 28, 2019

Alex Bolton  
Chair, Joint Review Panel  
Alberta Energy Regulator  
Suite 1000 – 250 5 Street SW  
Calgary, Alberta T2P 0R4

**RE: Benga Mining Ltd. – Grassy Mountain Coal Project – Proposed Joint Review Panel Site Visit**

Dear Mr. Bolton,

As requested in your letter dated August 21, 2019, please find attached a draft itinerary and corresponding map of locations and features for the proposed Joint Review Panel (the Panel) site visit during the week of September 23.

The attached map is a version provided as part of the Project's environmental impact assessment (CEAR #42) (Figure A.1.0-3 – Proposed Project Footprint – Aerial Photograph) with symbols depicting suggested stop locations for the site visit.

Benga acknowledges the Panel would like to minimize interactions with Benga staff as much as possible to maintain their independence and neutrality. In line with this, Benga will provide the Panel a script that the person giving the tour will follow, which can be posted to the public registry. This script would be submitted to the Panel under a separate cover, once further direction is provided by the Panel (as suggested in the August 21, 2019 notification letter) regarding "procedures that would be followed during the site visit".

Correspondence regarding this itinerary should be directed to the attention of Martin Ignasiak (Osler) and Mike Bartlett (Millennium EMS Solutions Ltd).

Sincerely,

<Original signed by>

Gary Houston, VP External Affairs  
Benga Mining Ltd.

## JRP - Site Tour of Grassy Mountain Coal Project

### Draft Itinerary

**Participants meet at** <information removed> **for safety**  
**briefing (15 minutes).**

**Address:** <information removed>

- Review of safety and environmental rules and procedures to adhere to during site tour
- Overview of high-level itinerary for the site tour
- Benga will provide Personal Protective Equipment as required (participants should have suitable fall outerwear and closed toe footwear for walking in mountainous terrain)

**Participants will walk a short distance to Stop #1.**

**Stop #1: Existing CPGC Fairways – Proposed Rail Loop & Loadout (15 minutes)**

- View of proposed rail loop and coal loadout infrastructure locations
- View of existing air quality monitoring station installed by Benga

**Participants depart in Benga vehicle(s) to Stop #2 via Grassy Mountain Road (20 minutes)**

**Stop #2: Blairmore Creek Valley - Proposed Mine Infrastructure Area (MIA) and Coal Handling and Processing Plant (CHPP) (30 minutes)**

- Point out proposed MIA and CHPP locations
- View of archeological site (DjPo-98)
- View of Blairmore Creek

**Participants depart for Stop #3 (15 minutes)**

**Stop #3: Gold Creek Valley (15 minutes)**

- View of Gold Creek

**Participants depart for Stop #4 (15 minutes)**

**Stop #4: Grassy Mountain - Proposed Pit Area (15 minutes)**

- View of legacy mining activity and associated physical disturbance
- Explanation of legacy mining cut

**Participants switch to smaller Benga vehicles to travel to Stop #5 (30 minutes)**

**Stop #5: Grassy Mountain – Mountain peak (15 minutes)**

- View of legacy mining cut from the Northern extent
- View of proposed Rock Disposal Area(s)
- Point out acquired freehold lands and adjacent properties

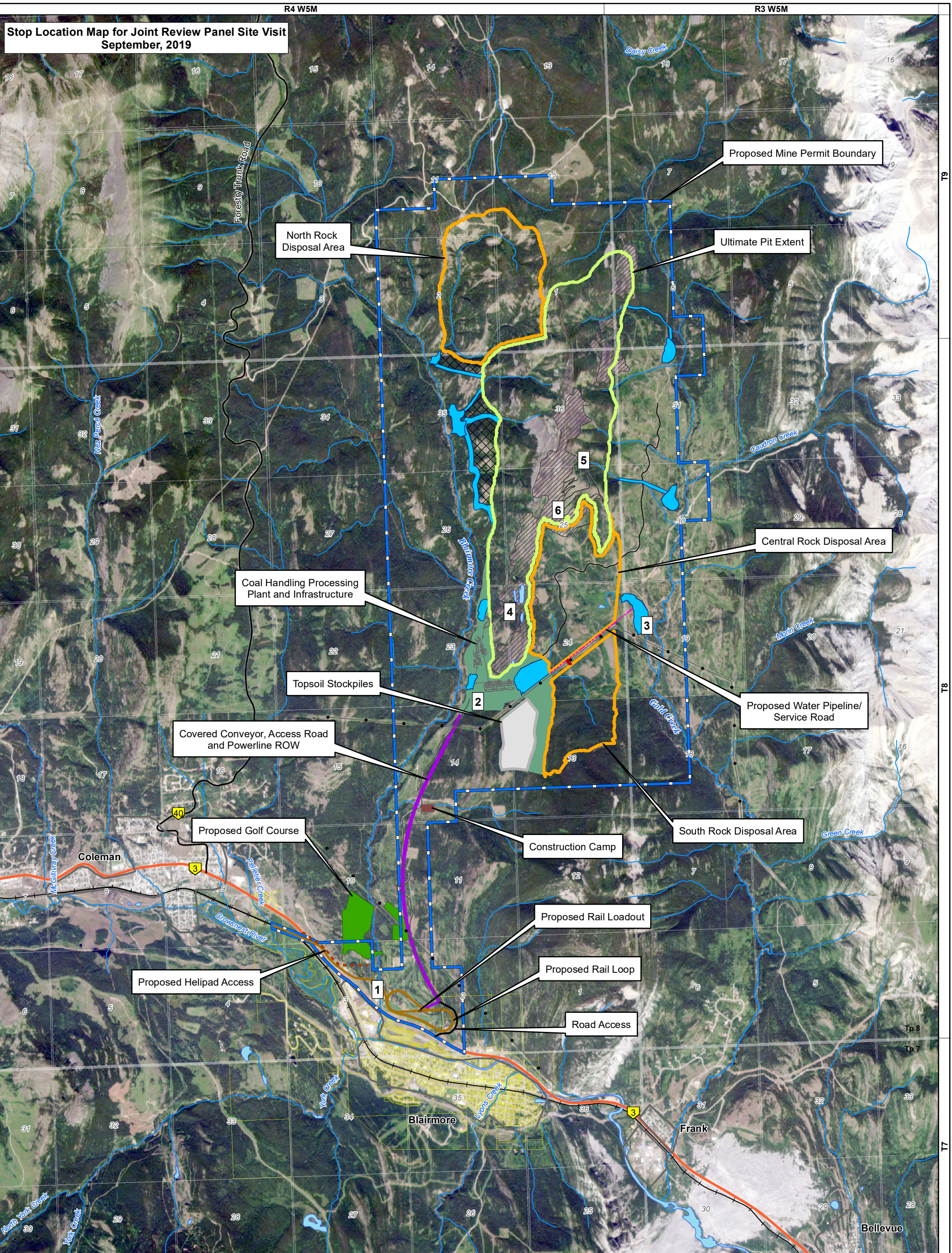
**Participants will depart to Stop #6 (15 minutes)**

**Stop #6: Grassy Mountain – South facing view point (10 minutes)**

- Point out location of proposed mine components
- View of surrounding landscape (Livingstone Range, Crowsnest Mountain, Town of Blairmore)
- Point out visible coal seams


**Participants will depart back to Stop #4 to switch back to large capacity vehicle(s) and return to the <information removed> (Stop #1). (30 Minutes)**

**End of Tour – Total time approximately 4 hours.**



LEGEND	
Existing Access Road	Secondary Highway
Existing Powerline	Existing Railway
CHPP Facilities	Blairmore Creek; Gold Creek
Proposed Water Pipeline/Service Road	Surface Water Drainage
Railway Loop	NHN_WATERBODY_082G_LL83
Proposed Helipad Access	Legacy Mine Disturbance
Access Road	Red: Band_1
Rail Loadout	Green: Band_2
Proposed Haul Road	Blue: Band_3
Road Access	Proposed Mine Permit Boundary
Primary Highway	Ultimate Pit Extent
Ultimate Rock Disposal Area Extent	Topsoil Storage
Construction Camp	Ponds and Ditches
Coal Handling Processing Plant and Infrastructure	Covered Conveyor, Access Road and Powerline ROW
Proposed Golf Course Area	Proposed Helipad Access
Undisturbed Area	Blairmore Parcels

1 Stop Location


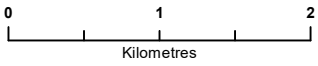



## GRASSY MOUNTAIN COAL PROJECT

### PROPOSED PROJECT FOOTPRINT AERIAL PHOTOGRAPH

AltaLIS, 2019; Deswik, 2016; Golder, 2016; MEMS, 2019; Riversdale, 2018; Benga, 2019 (Image Date: 2013)

Coordinate System: NAD 1983 UTM Zone 11N



PROJECT: 14-00201  
 DRAWN BY: JLAMBERTS  
 CHECKED BY: MB  
 DATE: AUGUST 28, 2019

**FIGURE**  
**A.1.0-3**

Document Path: K:\Active Projects 2014\AP 14-00201 to 14-00250\14-00201\MXD\Figures\Landuse\Resubmission\Information Request 3\Fig A-1-0-3 Proposed Project Footprint - Aerial 14-00201.mxd

Disclaimer: This figure was derived from multiple data sources and while we make every effort to assure its accuracy, Millennium EMS Solutions Ltd. disclaims any representation or warranty and assumes no liability either for any errors, omission or inaccuracies that may occur.