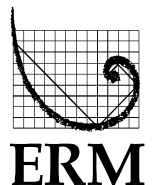
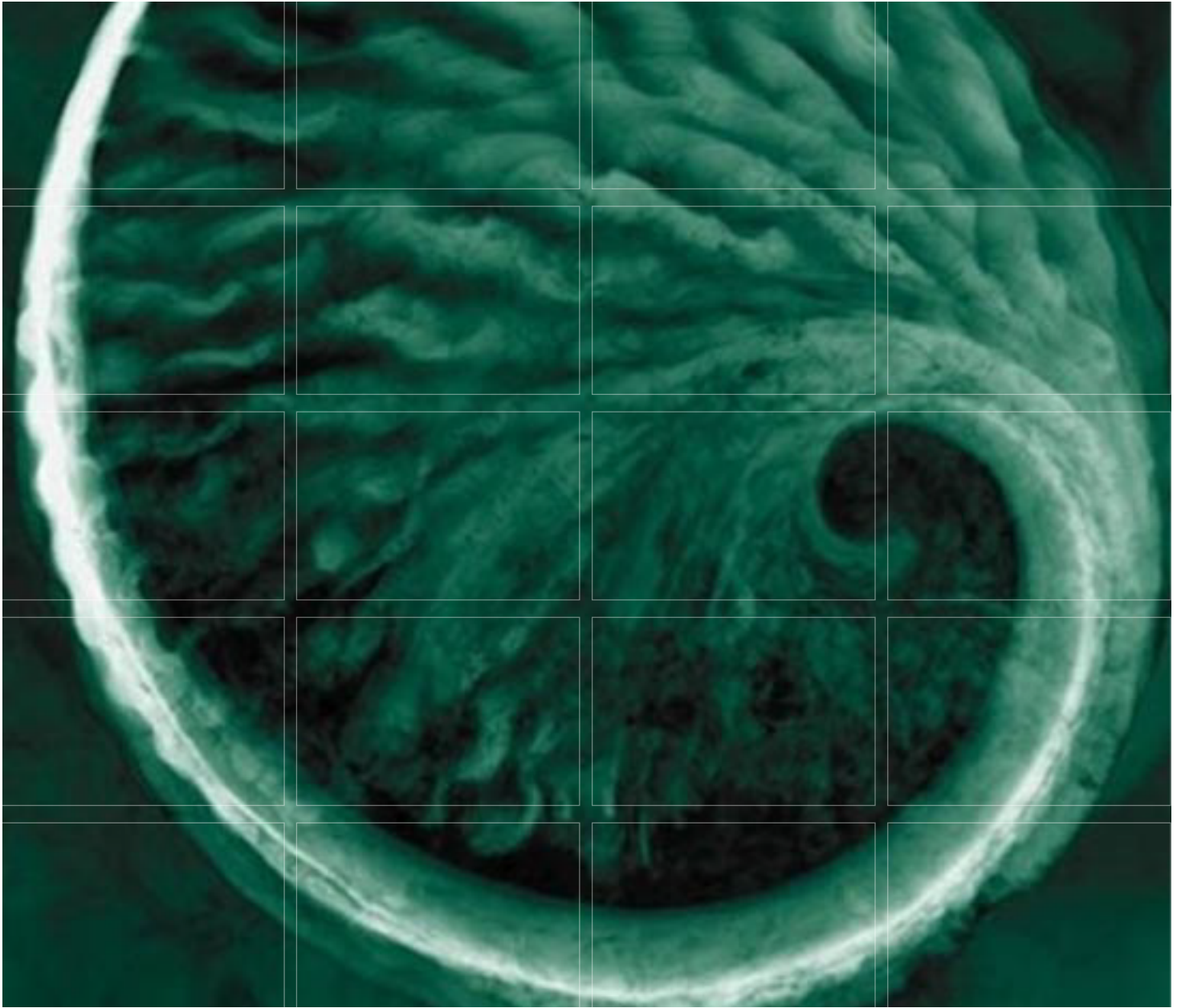


**BRUCEJACK GOLD MINE PROJECT**  
Application for an Environmental Assessment Certificate /  
Environmental Impact Statement

---

**Appendix 3-N**  
Pre-Application Public Consultation Report





*Prepared for:*

**PRETIVM** 

**BRUCEJACK GOLD MINE PROJECT**  
**Pre-Application**  
**Public Consultation Report**

June 2014

**Pretium Resources Inc.**

BRUCEJACK GOLD MINE PROJECT  
**Pre-Application Public Consultation Report**

**June 2014**

Project #0194151-0117

Citation:

ERM Rescan. 2014. *Brucejack Gold Mine Project: Pre-Application Public Consultation Report*.  
Prepared for Pretium Resources Inc. by ERM Consultants Canada Ltd.: Vancouver, British  
Columbia.

**ERM Rescan**

ERM Rescan Building, 15th Floor  
1111 West Hastings Street  
Vancouver, BC  
Canada V6E 2J3  
T: (604) 689-9460  
F: (604) 687-4277

ERM Rescan prepared this report for the sole and exclusive benefit of, and use by, Pretium Resources Inc. Notwithstanding delivery of this report by ERM Rescan or Pretium Resources Inc. to any third party, any copy of this report provided to a third party is provided for informational purposes only, without the right to rely.

# BRUCEJACK GOLD MINE PROJECT

## Pre-Application Public Consultation Report

### TABLE OF CONTENTS

|  |     |
|--|-----|
| Table of Contents .....  | i   |
| List of Figures .....  | i   |
| List of Tables .....   | ii  |
| List of Appendices.....  | ii  |
| Acronyms and Abbreviations .....   | iii |
| 1. Report Purpose and Organization .....   | 1-1 |
| 2. Information Distribution .....  | 2-1 |
| 3. Summary of Public Consultation .....  | 3-1 |
| 3.1 Application Information Requirements (AIR) and Open Houses .....                         | 3-1 |
| 3.1.1 Notification of November 2013 Open Houses and Draft AIR Public<br>Comment Period ..... | 3-2 |
| 3.2 Consultations with Tenure Holders.....   | 3-6 |
| 3.3 Consultations with Local Governments.....  | 3-6 |
| 3.4 Conferences and Panels .....   | 3-6 |
| 3.5 Donations.....   | 3-7 |
| 3.6 Community Contact.....   | 3-7 |
| 4. Issues Summary.....   | 4-1 |
| 5. Next Steps.....   | 5-1 |
| References .....   | R-1 |

### *LIST OF FIGURES*

|  |     |
|--|-----|
| Figure 1-1. Brucejack Gold Mine Project - Communities in the Regional Area ..... | 1-2 |
|--|-----|

*LIST OF TABLES*

Table 3.1-1. Summary of Comments Received during the Draft AIR Public Comment Period .....3-2

Table 3.1-2. Summary of BC EAO Open Houses.....3-3

Table 3.1-3. Summary of Comments and Questions Raised at the BC EAO Open Houses .....3-3

Table 3.2-1. Summary of Interviews with Tenure Holders.....3-6

Table 3.4-1. Participation in Conferences and Panels .....3-6

Table 3.5-1. Summary of Donations .....3-7

*LIST OF APPENDICES*

Appendix A. Summary of Communications with the Public - until March 31, 2014

Appendix B. Public Issues Tracking Table - until March 31, 2014

Appendix C. Notice of Open Houses and Invitation to Comment

## ACRONYMS AND ABBREVIATIONS

|                     |   |
|---------------------|---|
| <b>AIR</b>          | Application Information Requirements                    |
| <b>Application</b>  | Application for an Environmental Assessment Certificate |
| <b>BC EAO</b>       | BC Environmental Assessment Office                      |
| <b>BCEAA</b>        | British Columbia <i>Environmental Assessment Act</i>    |
| <b>CEAA</b>         | <i>Canadian Environmental Assessment Act</i>            |
| <b>CEA Agency</b>   | Canadian Environmental Assessment Agency                |
| <b>EA</b>           | Environmental Assessment                                |
| <b>EIS</b>          | Environmental Impact Statement                          |
| <b>e-PIC</b>        | Project Information Centre                              |
| <b>LSA</b>          | Local Study Area  |
| <b>Pretium</b>      | Pretium Resources Inc.                                  |
| <b>Project, the</b> | Brucejack Gold Mine Project, the                        |
| <b>RDKS</b>         | Regional District of Kitimat Stikine                    |
| <b>RSA</b>          | Regional Study Area                                     |

# 1. REPORT PURPOSE AND ORGANIZATION

Pretium Resources Inc. (Pretivm) is proposing to develop an underground gold and silver mine, the Brucejack Gold Mine Project (the Project), with a production capacity of 2,700 tonnes per day over a minimum 22-year mine life. The proposed Project is located approximately 65 km north-northwest of Stewart, BC. The Project is subject to the British Columbia *Environmental Assessment Act* (BCEAA; 2002) and the *Canadian Environmental Assessment Act, 2012* (CEAA, 2012).

This report is intended to fulfill the requirements outlined in Section 20 of the Section 11 order issued by the BC Environmental Assessment Office (BC EAO) on July 4, 2013 under the BCEAA 2002 (BC EAO 2013) to prepare a report consistent with the Public Consultation Plan (submitted to the BC EAO on September 3, 2013; Rescan 2013).

The Environmental Impact Statement (EIS) Guidelines released by the Canadian Environmental Assessment Agency (CEA Agency) on May 24, 2013 for the Project reiterate that one of the purposes of the *Canadian Environmental Assessment Act, 2012* (CEAA, 2012) is to ensure that CEA Agency provides “the public with an opportunity to participate in the EA and opportunity to comment on the draft EA report” (CEAA, 2012). Further, the EIS Guidelines state that “the proponent is required to provide current information about the project to the public and especially to the communities likely to be most affected by the project” (CEAA, 2012). Though the EIS Guidelines do not require proponents to prepare public consultation reports it is assumed the BC EAO will provide the report to the CEA Agency for informational purposes.

As per the Section 11 order, this report:

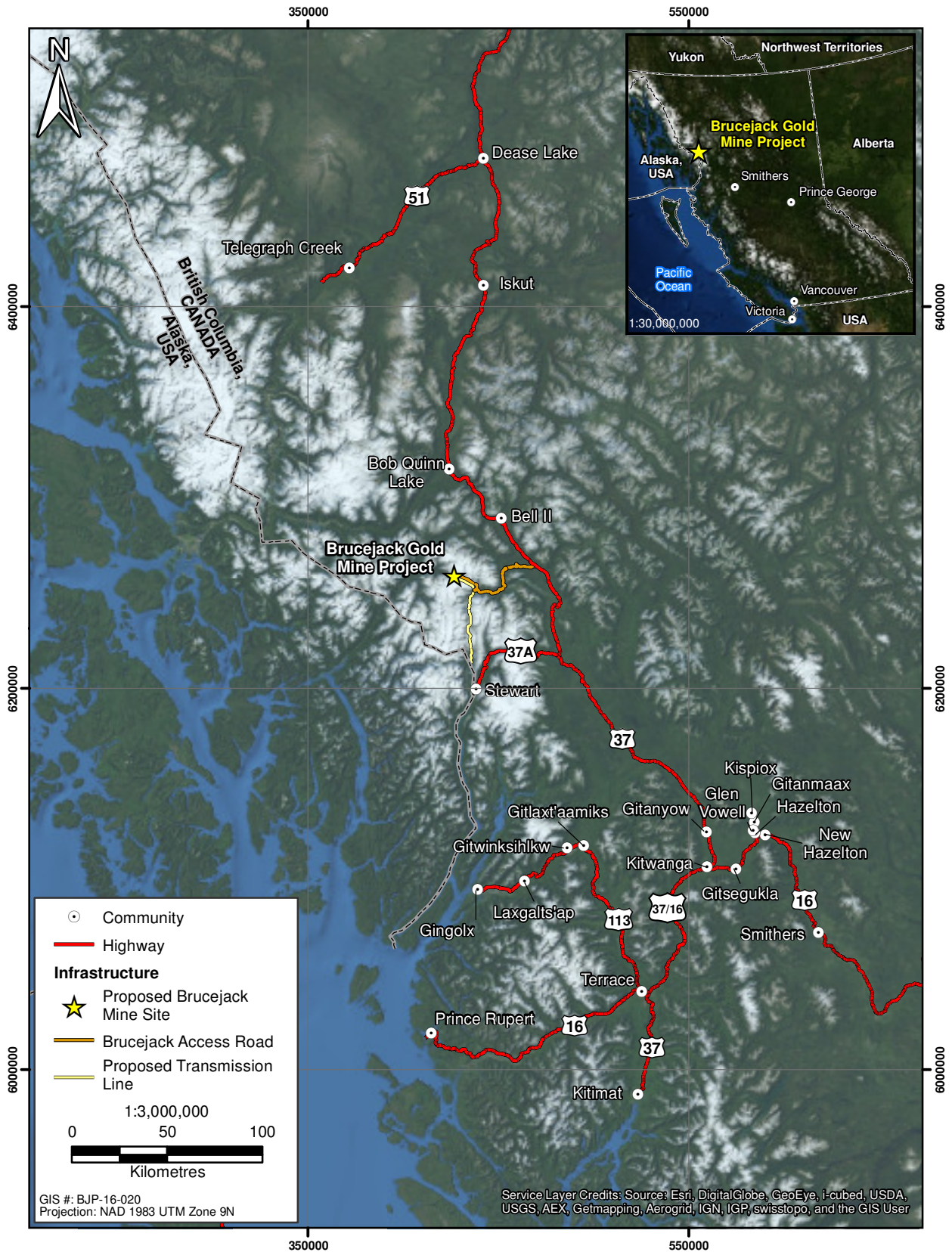
- summarizes public consultation carried out by Pretivm in relation to the proposed Project (Sections 2 and 3);
- summarizes the information, questions, and comments received from the public within the scope of the environmental assessment (EA) and provides initial responses (Section 4); and
- outlines next steps for public consultation activities (Section 5).

The “public” is interpreted as a broad entity that includes individuals who are not necessarily affiliated with an interest group. Figure 1-1 depicts the communities in the vicinity of the Project. Stakeholders include companies, organizations or individuals with interests or tenures in the Project area, and are also discussed in this report. Consultation with local (non-Aboriginal) governments is also discussed. A *Pre-Application Aboriginal Consultation Report* is being submitted to the BC EAO under a separate cover.

Pretivm provided an earlier consultation report, the *Brucejack Gold Mine Project: Interim Pre-Application Public Consultation Report*, covering consultation up until the close of the public comment period on the draft AIR on December 13, 2013, to BC EAO on January 13, 2014 (ERM Rescan 2014b). The timeframe for this report covers public consultation up until March 31, 2014.



**Figure 1-1**  
**Brucejack Gold Mine Project - Communities in the Regional Area**





## 2. INFORMATION DISTRIBUTION

Pretium has developed and distributed informational materials to help increase public awareness and understanding of the Project. These materials are summarized as follows<sup>1</sup>:

- **Pretium corporate website** (<http://www.pretium.com>):
  - corporate information including sustainability policies, photo gallery, and a news page;
  - Project-related information – Brucejack Gold Mine Project Page (<http://www.pretium.com/projects/brucejack/overview/default.aspx>):
    - Overview
    - Reserves and Resources
    - Claim Boundary Map
    - Drilling
    - Brucejack Geology – Summary
    - Technical Reports;
- **Project information booklet;**
- **Project posters/storyboards:**
  1. Pretium Resources Inc. (Pretium)
  2. Project Overview (1)
  3. Project Overview (2)
  4. Project Components and Environmental Design
  5. Mine Lifecycle and Employment
  6. Environmental Study Program (1)
  7. Environmental Study Program (2)
  8. Human Environment Study Program
  9. Public Participation and Aboriginal Consultation;
- **Project video;** and
- **Pretium PowerPoint presentations.**

---

<sup>1</sup> The Information Distribution and Consultation Chapter in the Application/EIS will include copies of outreach materials in the appendices.

### 3. SUMMARY OF PUBLIC CONSULTATION

Public and stakeholder communications and consultation activities to date have included a public comment period on the draft Application Information Requirements (AIR), open houses in five communities in northwest BC, private meetings with municipal governments, and interviews with land users and tenure holders as part of the land use baseline study for the EA. A summary of communications with the public, including local governments, tenure holders and stakeholders, is provided in Appendix A. Issues raised by these groups, along with Pretivm's preliminary responses, are included in issues tracking tables provided in Appendix B.

#### 3.1 APPLICATION INFORMATION REQUIREMENTS (AIR) AND OPEN HOUSES

The BC EAO held a 30-day public comment period on the draft AIR between November 13 and December 13, 2013. Hard copies of the draft AIR were available in the following locations for the duration of the comment period:

- Hazelton Public Library (4255 Government Street, Hazelton);
- Gitlaxt'aamiks Village Government (222 - 5th Avenue Main St., Gitlaxt'aamiks/New Aiyansh);
- Dease Lake Learning Centre/Northern Lights College Library (10 Commercial Dr., Dease Lake);
- Stewart Public Library (824 A Main Street, Stewart);
- Smithers Public Library (3817 Alfred Avenue, Smithers); and
- Terrace Public Library (4610 Park Avenue, Terrace).

One set of public comments was submitted to BC EAO and posted to the electronic Project Information Centre (e-PIC) site on December 10, 2013 from a resident in Smithers, BC<sup>2</sup>. The set of comments is summarized in Table 3.1-1 and included in the issues tracking table in Appendix B. Pretivm has prepared responses to these comments and provided these to the BC EAO, who will post them to the e-PIC site.

The BC EAO held five open houses in November 2013 to provide information on the EA process and obtain comments on the draft AIR (Table 3.1-2). Pretivm attended the open houses to provide information about the Project, and respond to questions or comments about the Project. Pretivm displayed nine posters on stands (8' x 3') describing the Project and baseline studies being conducted for the EA, and screened a short Project video throughout the duration of each open house. BC EAO displayed two large posters describing the EA process and opportunities for public comment. Pretivm provided food and refreshments at each open house (including formal dinners in Gitlaxt'aamiks and Iskut). Pretivm also displayed an information booklet about the Project, large maps of the Project area, copies of the Aboriginal Consultation Plan and Public Consultation Plan,

---

<sup>2</sup> [http://a100.gov.bc.ca/appsdata/epic/documents/p395/1386714861665\\_9ce23d41acf6ad56050e655743eb04a04b2936cc97a313a2c00a652fd10133bf.pdf](http://a100.gov.bc.ca/appsdata/epic/documents/p395/1386714861665_9ce23d41acf6ad56050e655743eb04a04b2936cc97a313a2c00a652fd10133bf.pdf)

and copies of the draft AIR. Pretivm also provided feedback forms and an anonymous box for the public to comment on the Project and evaluate the open house format. These comments are summarized in Table 3.1-3, along with the questions and comments Pretivm recorded at the open houses. The majority of the comments and questions are from the meeting in Gitlaxt'aamiks where the community requested a question and answer session following dinner. At the other open houses, smaller discussions took place between Pretivm, BC EAO, and attendees.

**Table 3.1-1. Summary of Comments Received during the Draft AIR Public Comment Period**

| Comment<br>(Date Received)                           | Summarized Comment   |
|--|--|
| Member of the Public,<br>Smithers<br>(Dec. 10, 2013) | <ul style="list-style-type: none"> <li>• Concern about tailings deposition in Brucejack Lake.               <ul style="list-style-type: none"> <li>– Rationale for this method of tailings management.</li> <li>– Baseline information about the limnology, hydrology, and aquatic resources of Brucejack Lake needed; would also like to see baseline (ideally pre-exploration) data for Bowser Lake.</li> </ul> </li> <li>• Potential effects to eulachon.               <ul style="list-style-type: none"> <li>– What is the current status and population trend of eulachon in the Nass and Unuk rivers?</li> <li>– Assessment boundaries are inadequate to assess this.</li> </ul> </li> <li>• Greenhouse gas emissions should get a full “lifecycle” accounting, including all mine related activities; e.g., access road/s, hydro line construction, exploration drilling, mining and onsite infrastructure, waste disposal, helicopter support, transport and shipping of concentrate, etc.</li> <li>• Will erosion control and emergency response plans address potential storm events that could exceed 100-year maximums?</li> <li>• Plan for re-vegetating road cutbanks and cleared right-of-ways; e.g., commercial seed mix that will attract bears and grizzlies?</li> <li>• Transboundary effects (via Sulphurets Creek and Unuk River).</li> <li>• Adequacy of upfront bonding to cover reclamation costs, monitoring, and maintenance.</li> <li>• Table 7.4-1, terrestrial environment theme should include avalanche track ecosystems as a valued subcomponent.</li> <li>• How will the cumulative effects assessment (section 10.6) be conducted?               <ul style="list-style-type: none"> <li>– Which projects will be included/considered, including cotemporary and previous?</li> </ul> </li> <li>• Contesting statement (p. 9-17) that fish habitat will not be altered, disrupted or destroyed.</li> </ul> |

### 3.1.1 Notification of November 2013 Open Houses and Draft AIR Public Comment Period

The BC EAO placed a notice on its website, e-PIC, on November 5, 2013 to invite the public to attend the open houses and to comment on the draft AIR. The notice identified the dates, locations and times of the open houses and the date of the draft AIR public comment period. The notice also identified where copies of the draft AIR were available for viewing and how to submit comments (Appendix C).

**Table 3.1-2. Summary of BC EAO Open Houses**

| Date and Time                        | Location                            | Venue                                       | Number of Attendees |
|--------------------------------------|-------------------------------------|---|---------------------|
| November 25, 2013,<br>4:30pm-8:00pm  | Gitlaxt'aamiks<br>(New Aiyansh), BC | Gitmidiik Hall                              | ~40                 |
| November 26, 2013,<br>4:30pm-8:00pm  | Stewart, BC                         | Al Lawrence Memorial<br>Centre              | ~20                 |
| November 27, 2013,<br>4:00pm-7:30pm  | Hazelton, BC                        | St. Peter's Anglican Church                 | ~45                 |
| November 28, 2013,<br>10:30am-1:00pm | Dease Lake, BC                      | Dease Lake Community Hall                   | 8                   |
| November 28, 2013,<br>5:00pm-7:30pm  | Iskut, BC                           | Klappan Independent Day<br>School Gymnasium | 9                   |

**Table 3.1-3. Summary of Comments and Questions Raised at the BC EAO Open Houses**

| Open House                             | Summary of Comments and Questions   |
|--|---|
| Gitlaxt'aamiks<br>(New Aiyansh),<br>BC | <p><b><u>Water Quality and Tailings</u></b></p> <ul style="list-style-type: none"> <li>• Effects to groundwater (underground water tables; where and how does Brucejack Lake connect to underground water tables).</li> <li>• Concern about impacts to Brucejack Lake (water quality, tailings management, capacity of the lake to contain the tailings, impacts to fish in the lake).</li> <li>• How will the tailings stay settled in the bottom of the lake?</li> <li>• Why deposit tailings under the lake? Why not use a TMF? Where are the tailings stored before being deposited in lake?</li> <li>• Water quality effects downstream of Brucejack Lake.</li> <li>• Concern that with climate change and changing water levels, predictions related to tailings and water management may be inaccurate.</li> <li>• What has been/is being done to avoid impacts to Bowser Lake, which feeds into the Nass?</li> <li>• What "security" is in place to protect Bowser River?</li> <li>• Concern about leaching of chemicals from tailings, and water quality (how is leaching in lake prevented?).</li> <li>• What is the lifespan of the cement mix that will be mixed with tailings and backfilled?</li> <li>• How do you factor in the natural movement of rivers; i.e., concern that clean rivers will, over time, migrate into polluted Brucejack Lake.</li> <li>• Will water quality of glacier run-off be affected?</li> <li>• If there are going to be impacts downstream, we want to know about them.</li> <li>• Interested in long-term impacts on water and the environment.</li> </ul> <p><b><u>Accidents and Spills</u></b></p> <ul style="list-style-type: none"> <li>• Concern about accidental spills along access road polluting receiving environment/ waterways.</li> </ul> <p><b><u>Transportation and Shipping</u></b></p> <ul style="list-style-type: none"> <li>• How much of Nisga'a Lands does the Brucejack Access Road cross through?</li> <li>• What will be transported on the road?</li> <li>• Where will the core be shipped to?</li> </ul> |

*(continued)*

**Table 3.1-3. Summary of Comments and Questions Raised at the BC EAO Open Houses (continued)**

| Open House                                      | Summary of Comments and Questions   |
|---|---|
| Gitlaxt'aamiks<br>(New Aiyansh),<br>BC (cont'd) | <p><b><u>Employment and Training</u></b></p> <ul style="list-style-type: none"> <li>• How many Nisga'a are employed by the Project currently? How many from other First Nations?</li> <li>• Hire locals from Nisga'a villages to staff the Project and treat them fairly.</li> <li>• Supportive of Project because of employment opportunities.</li> <li>• Notify us right away regarding employment. We have 72 individuals in New Aiyansh that have trades certificates but no apprenticeships.</li> <li>• Solicit the unions and contractors so we can start talking to them.</li> <li>• We don't want to be small labourers; we are skilled, trained and have local knowledge.</li> <li>• When getting closer to jobs becoming available, recommends forming a task force group.</li> </ul> <p><b><u>Monitoring and Closure</u></b></p> <ul style="list-style-type: none"> <li>• Environmental monitoring.</li> <li>• Do you have photos of other Pretivm projects that have been successfully closed?</li> <li>• You need to prove to us/show us how safe your Project is going to be; use visuals to communicate.</li> <li>• How long has Pretivm been around?</li> <li>• What is Pretivm's proven track record/success rate developing and closing other projects?</li> <li>• What is Brucejack going to look like after this Project is done?</li> </ul> <p><b><u>Project Description</u></b></p> <ul style="list-style-type: none"> <li>• How big is the deposit? Where is the exploration taking place (is it in the Nass Area)?</li> <li>• Question about water purification.</li> <li>• Have you used cement backfill (in underground workings) elsewhere?</li> <li>• How deep underground will this mine go?</li> <li>• How much surface area will the mine cover?</li> <li>• What is the composition of the cement?</li> </ul> <p><b><u>Consultation and EA Process</u></b></p> <ul style="list-style-type: none"> <li>• Are we going to see the results of the negotiations with Nisga'a Lisims Government (NLG)?</li> <li>• Recommendation to show how the bottom of the lake is shaped and how it can hold the tailings - need a visual.</li> <li>• Are you having this meeting in other communities (other Nisga'a villages)?</li> <li>• Commented on the low turnout.</li> <li>• Get notices out into mailboxes.</li> <li>• Would like information materials in advance of the meeting.</li> <li>• Communicate well in advance of a community meeting with Village Governments.</li> <li>• Noted a (perceived) absence of discussion of TK.</li> </ul> |
| Stewart, BC                                     | <p><b><u>Infrastructure</u></b></p> <ul style="list-style-type: none"> <li>• Potential impacts to infrastructure and health services.</li> </ul> <p><b><u>Transportation and Shipping</u></b></p> <ul style="list-style-type: none"> <li>• Impacts to harbour including water quality.</li> <li>• Cumulative effects from increased traffic on Hwy 37A (including effects to tourism- approximately 40,000 tourists per summer and many drive RVs).</li> </ul>  |

(continued)

**Table 3.1-3. Summary of Comments and Questions Raised at the BC EAO Open Houses (completed)**

| Open House                       | Summary of Comments and Questions   |
|----------------------------------|---|
| Stewart, BC<br>( <i>cont'd</i> ) | <p><b><u>Project Benefits</u></b></p> <ul style="list-style-type: none"> <li>• Stewart wants to enter into a revenue sharing agreement with the province; industry can lobby government to help with this.</li> <li>• The Project will be an economic boost for BC and especially Stewart.</li> </ul>   |
| Hazelton, BC                     | <p><b><u>Project Benefits</u></b></p> <ul style="list-style-type: none"> <li>• Very positive for the local economy.</li> <li>• Small Project footprint.</li> <li>• Could be a major employer in Hazelton.</li> <li>• Supportive - potential jobs.</li> <li>• When will jobs become available?</li> </ul> <p><b><u>Consultation</u></b></p> <ul style="list-style-type: none"> <li>• Would like to be presented with more research.</li> <li>• Recommend not holding public meetings during the daytime.</li> </ul> <p><b><u>Water Quality and Tailings</u></b></p> <ul style="list-style-type: none"> <li>• Tailings management.</li> <li>• Water quality in Brucejack Lake.</li> </ul> |
| Dease Lake, BC                   | <ul style="list-style-type: none"> <li>• Employment opportunities.</li> <li>• Location of Tahltan territory in relation to the Project.</li> <li>• How will the tailings be managed?</li> </ul>   |
| Iskut, BC                        | <ul style="list-style-type: none"> <li>• Are there fish in Brucejack Lake?</li> <li>• How many Tahltan are working at the Project?</li> <li>• Interest in jobs.</li> <li>• Supportive of the Project (jobs).</li> </ul>   |

Pretium placed notices (Appendix C) advertising the dates of the open houses, and the locations and timing of the public comment period in the following newspapers for a three-week period:

- Northern Connector (weeks of Nov. 8, Nov. 15, Nov. 22);
- Interior News (weeks of Nov. 6, Nov. 13, Nov. 20); and
- Terrace Standard (weeks of Nov. 6, Nov. 13, Nov. 20).

The timeframes for placing the advertisements relating to the open houses and draft AIR met the requirements of Section 21 of the Section 11 Order. This section requires that public notice be given at least 7 days before the start of a formal public comment period, or the date on which an open house or public meeting is scheduled.

On November 20, 2013, Pretium emailed representatives of City of Terrace, Town of Smithers, District of Hazelton, District of Stewart, and Regional District of Kitimat-Stikine, as well as a variety of stakeholders (economic development associations, chambers of commerce, social service and health providers, educational institutions, etc.) and tenure holders (trapline and commercial recreation tenure holders) inviting them to the open houses and advising of the public comment period on the draft AIR.

### 3.2 CONSULTATIONS WITH TENURE HOLDERS

Table 3.2-1 lists the dates of interviews with tenure holders. The primary purpose of the interviews was to obtain information about the nature of the tenure and potential impacts of the Project on their business interests. The results of these interviews will be provided in the Application/EIS (Land Use Baseline Report and the Land Use Effects chapter). Issues and concerns raised by interviewees are summarized and included in Appendix B.

**Table 3.2-1. Summary of Interviews with Tenure Holders**

| Tenure Holder                                   | Interview Date                     |
|---|------------------------------------|
| Bear Enterprises                                | October 24, 2013*                  |
| Last Frontier Heliskiing                        | August 22, 2012                    |
| Milligan Outfitting (Coast Mountain Outfitters) | August 24, 2012                    |
| Misty Mountain Outfitters**                     | January 11, 2013                   |
| Spey Lodge**                                    | June 22, 2012                      |
| Tenure 601074                                   | November 13, 2013*                 |
| Trapline TR0621T001                             | August 22, 2012; November 5, 2013* |

\* Interview dates marked with \* indicate that questions pertaining to navigation of waterways in the Project area were included.

\*\* Tenure holders marked with \*\* next to their name indicate that attempts were made to arrange a secondary interview to discuss navigation of waterways in the Project area, but no follow-up interview has been done (i.e., no response to date).

### 3.3 CONSULTATIONS WITH LOCAL GOVERNMENTS

Pretivm has met with representatives of the City of Terrace and the Town of Smithers (Mayor, Mayor and Council) several times between 2011 and 2012, and has also met with the Regional District of Kitimat-Stikine (RDKS). RDKS is a member of the BC EAO Project Working Group and had the opportunity to tour the site on September 5, 2014; however, RDKS was unable to attend at that time.

### 3.4 CONFERENCES AND PANELS

Table 3.4-1 summarizes Pretivm's participation in conferences and panels to date (March 31, 2014). Participation in Aboriginal events and forums are not documented in this report and are included in the *Brucejack Gold Mine Project: Pre-Application Aboriginal Consultation Report* (ERM Rescan 2014a).

**Table 3.4-1. Participation in Conferences and Panels**

| Date                 | Name of Conference/Event                          | Location      | Description          |
|----------------------|---|---------------|----------------------|
| February 19-21, 2014 | Rock Talk 2014, Smithers Exploration Group        | Smithers      | Presenter            |
| January 28, 2014     | Round-Up Luncheon                                 | Vancouver     | CEO, Keynote Speaker |
| January 22, 2014     | BC Natural Resource Forum                         | Prince George | CEO, Speaker         |
| January 21, 2014     | Initiatives Prince George/ Market Expansion Forum | Prince George | CEO, Speaker         |

(continued)



**Table 3.4-1. Participation in Conferences and Panels (completed)**

| Date               | Name of Conference/Event                  | Location       | Description                                      |
|--------------------|---|----------------|--|
| September 27, 2013 | Society of Economic Geologists Conference | Whistler       | Technical Session Presenter                      |
| September 26, 2013 | CIM Luncheon                              | Vancouver      | CEO, Keynote Speaker                             |
| April 24-26, 2013  | Minerals North                            | Terrace        | Sponsor  |
| March 5, 2013      | PDAC                                      | Toronto        | Received Exploration Award                       |
| January 28, 2013   | Round-Up                                  | Vancouver      | Technical Session Presenter, Sponsor             |
| September 19, 2012 | Brucejack Technical Session               | Public Webcast | Project Technical Overview                       |
| May 23-25, 2012    | Minerals North                            | Burns Lake     | Sponsor  |
| March 4-5, 2012    | PDAC                                      | Toronto        | Core Shack                                       |
| January 23, 2012   | Round-Up                                  | Vancouver      | Technical Session Presenter, Core Shack, Sponsor |
| November 2, 2011   | AME BC Luncheon                           | Vancouver      | CEO, Keynote Speaker                             |
| April 27-29, 2011  | Minerals North                            | Stewart        | Sponsor  |
| January, 2011      | Round-Up                                  | Vancouver      | Exhibitor, Sponsor                               |

### 3.5 DONATIONS

Table 3.5-1 summarizes Pretivm's community donations to date as part of its efforts to support communities in the vicinity of its operations.

**Table 3.5-1. Summary of Donations**

| Date          | Community/Organization                                  | Description   |
|---------------|---|---|
| December 2013 | Bear Valley School, Stewart                             | Donated funds for holiday celebration   |
| April 2013    | New Hazelton Elementary School, Parent Advisory Council | Donated funds for playground equipment  |
| March 2013    | New Hazelton  | Donated refurbished laptops   |
| March 2013    | Mayor's Office, District of Stewart                     | Contributed a 250-copy print-run of a marketing feature on the district of Stewart in the <i>International Resource Journal</i> |
| May 2012      | Bear Valley School, Stewart                             | Donated funds for school celebration  |

### 3.6 COMMUNITY CONTACT

Pretivm has included various contact methods (email, phone, and website) for the public to get in touch with them with questions or comments. These methods have been advertised on information materials displayed at open houses and provided to stakeholders. On August 1, 2013 Pretivm opened its office in Smithers, BC.

## 4. ISSUES SUMMARY

Appendix B contains an issues tracking table that documents the issues raised by the public to date (March 31, 2014) during the DAIR open houses, comments during the DAIR public comment period, interviews with tenure holders, and in correspondence relating to the proposed Project. Pretivm has considered, or is considering, these issues and comments and has included preliminary responses to the issues in the issues tracking table. Since the EA is currently underway, Pretivm will revise the preliminary responses included in Appendix B and update them as necessary (including updating section references to the Application/EIS where applicable) for inclusion in the Information Distribution and Consultation Chapter of the Application/EIS.

The public raised concerns in the following areas (see Appendix B for detailed issues and Pretivm's responses):

- Aboriginal;
- Accidents and Malfunctions;
- Climate;
- Consultation;
- Cumulative Effects;
- Education and Training;
- Employment/Economic Opportunities;
- Fish and Fish Habitat;
- Guiding/Outfitting;
- Hunting/Trapping;
- Hydrogeology;
- Infrastructure and Services;
- Project Closure;
- Rights and Title;
- Tailings Management;
- Vegetation and Soils;
- Water Quality; and
- Wildlife.

## 5. NEXT STEPS

Throughout the remainder of the pre-Application/pre-EIS review stage Pretivm will continue to consult with the public and stakeholders as per section 5.4 of Pretivm's Public Consultation Plan. The purpose of Pretivm's pre-Application consultation is to identify the potential adverse effects of the proposed Project on public interests. Pretivm will take into account any additional issues and interests raised by the public when preparing the Application/EIS for formal review, including measures to avoid or mitigate potential adverse effects.

Activities will include regular communications and/or additional meetings with stakeholders and local governments, and another round of open houses following the BC EAO's acceptance of the Application/EIS. As per the Section 11 Order, a third public consultation report may be required by the BC EAO. The Information Distribution and Consultation Chapter of the Application/EIS will also report on public consultation after February 28, 2014 up until submission of the Application/EIS to the BC EAO, and will reiterate the plan for continued consultation during the Application Review Stage, as outlined in Section 5.5 of Pretivm's Public Consultation Plan.

## REFERENCES

2002. *British Columbia Environmental Assessment Act*, SBC. C. 43.
2012. *Canadian Environmental Assessment Act*, C. 19. s. 52.
- BC EAO. 2013. *Order under Section 11 of the Environmental Assessment Act* S.B.C 2002, c.43.
- ERM Rescan. 2014a. *Brucejack Gold Mine Project: Interim Pre-Application Aboriginal Consultation Report*. Prepared for Pretium Resources Inc. by ERM Consultants Canada Ltd.: Vancouver, BC.
- ERM Rescan. 2014b. *Brucejack Gold Mine Project: Interim Pre-Application Public Consultation Report*. Prepared for Pretium Resources Inc. by ERM Consultants Canada Ltd.: Vancouver, BC.
- Rescan. 2013. *Brucejack Gold Mine Project: Public Consultation Plan*. Prepared for Pretium Resources Inc. by Rescan Environmental Services Ltd.: Vancouver, BC.

## *Appendix A*

*Summary of Communications with the Public – until  
March 31, 2014*

**Appendix A. Summary of Communications with the Public – until March 31, 2014**

| Stakeholder Group  | Communication Date | Communication Method | Communication Subject  | Communication Summary  | Issues Raised*  |
|--|--------------------|----------------------|--|--|---|
| <b>Ascot Resources</b>                                       |                    |                      |  |  |   |
|  | 11/20/2013 2:49 PM | Email                | Proposed Brucejack Powerline - Overlap with Ascot Mineral Resource | Pretivm contacted Ascot Resources to coordinate a meeting time to discuss a potential conflict with the proposed power line overlapping identified mineral resources owned by Ascot.   | N/A   |
| <b>Bear Enterprises</b>                                      |                    |                      |  |  |   |
|  | 10/24/2013 1:00 PM | Phone                | Land Use/Navigable Waters Interview                                | Pretivm completed a brief land use and navigable waters interview with commercial recreation licence holder/representative of Bear Mountaineering and Burnie Glacier Chalet.   | N/A   |
|  | 11/20/2013 2:46 PM | Email                | Invitation to an Open House on the Brucejack Gold Mine Project     | Pretivm invited stakeholders to public open houses, held from Nov. 25-28, 2013.  | N/A   |
| <b>British Columbia Aboriginal Mine Training Association</b> |                    |                      |  |  |   |
|  | 11/20/2013 2:46 PM | Email                | Invitation to an Open House on the Brucejack Gold Mine Project     | Pretivm invited stakeholders to public open houses, held from Nov. 25-28, 2013.  | N/A   |
| <b>Bulkley Valley Economic Development Association</b>       |                    |                      |  |  |   |
|  | 11/20/2013 2:46 PM | Email                | Invitation to an Open House on the Brucejack Gold Mine Project     | Pretivm invited stakeholders to public open houses, held from Nov. 25-28, 2013.  | N/A   |
| <b>City of Terrace</b>                                       |                    |                      |  |  |   |
|  | 11/14/2011 6:00 PM | Meeting (Terrace)    | Project Introduction-Terrace Mayor and Council                     | Pretivm met with Mayor for dinner in Terrace at 6 pm, and discussed activity in the North and the Brucejack Project. At 7:30pm Pretivm gave a presentation to the full Terrace Council, in Council Chambers, on the Project.   | N/A   |
|  | 1/25/2012 9:30 AM  | Meeting (Vancouver)  | Business Development Meeting-City of Terrace                       | Meeting in Vancouver to update on the Project and discuss business development opportunities and available services in Terrace. Discussed sourcing personnel, supplies, and equipment out of Terrace.  | N/A   |
|  | 3/28/2012 7:30 AM  | Meeting (Terrace)    | Project Update Meeting- City of Terrace                            | Pretivm provided a presentation on the Project to the Terrace Mayor and Council, at the Bear Country Inn in Terrace.   | Consultation- Keep communities and businesses apprised of projects and how they are progressing; and<br>Employment/Economic Opportunities- Inform local business community about project plans/schedules so they are positioned to respond. |
|  | 11/30/2012 2:20 PM | Meeting (Vancouver)  | Project Update Meeting- Mayor of Terrace                           | Pretivm provided a presentation on the Project Description to the Mayor of Terrace in Vancouver.   | N/A   |
|  | 11/20/2013 2:46 PM | Email                | Invitation to an Open House on the Brucejack Gold Mine Project     | Pretivm invited stakeholders to public open houses, held from Nov. 25-28, 2013.  | N/A   |
| <b>District of New Hazelton</b>                              |                    |                      |  |  |   |
|  | 11/19/2013 5:16 PM | Email                | Community Notification for Open House                              | Pretivm contacted the District of New Hazelton for assistance in promoting the Brucejack Gold Mine Project open house, to be held in Hazelton Nov. 27, 2013. Pretivm provided a poster and requested for posting around town, requested the District of New Hazelton advertise the open house on their website (as per earlier discussion), and provide recommendations for other promotion options. | N/A   |
|  | 11/20/2013 2:46 PM | Email                | Invitation to an Open House on the Brucejack Gold Mine Project     | Pretivm invited stakeholders to public open houses, held from Nov. 25-28, 2013.  | N/A   |

\* Draft responses to these issues are included in the issues tracking table in Appendix B.

**Appendix A. Summary of Communications with the Public – until March 31, 2014**

| Stakeholder Group          | Communication Date | Communication Method | Communication Subject  | Communication Summary   | Issues Raised*   |
|----------------------------|--------------------|----------------------|--|---|--|
| <b>District of Stewart</b> |                    |                      |  |   |  |
|                            | 11/19/2013 4:59 PM | Email                | Community Notification for Open House                          | Pretivm contacted the District of Stewart to thank them for their assistance in promoting the Brucejack Project Open House in Stewart, and to provide them with a community notification poster that they had agreed to post around town.   | N/A  |
|                            | 11/20/2013 2:46 PM | Email                | Invitation to an Open House on the Brucejack Gold Mine Project | Pretivm invited stakeholders to public open houses, held from Nov. 25-28, 2013.   | N/A  |
| <b>General Public</b>      |                    |                      |  |   |  |
|                            | 11/25/2013 4:30 PM | Open House           | Gitlaaxt'aamiks/New Aiyansh DAIR Open House                    | One of five open houses in northwest BC hosted by BC EAO and attended by Pretivm. Pretivm displayed nine posters describing the Project and baseline studies being conducted for the EA. BC EAO displayed two posters describing the EA process and opportunities for public comment. Pretivm provided a formal dinner in Gitlaxt'aamiks. Approximately 40 people attended. A question and answer period took place following the dinner. Comments summarized in stakeholder comments and included in notes. Pretivm also displayed an information booklet about the Project, large maps of the Project area, copies of the Aboriginal Consultation Plan and Public Consultation Plan, and copies of the draft AIR, and provided feedback forms and an anonymous box for the public to comment on the Project and evaluate the open house format. | <p>Aboriginal- Relation of exploration activities and project to the Nass River and Nass Area;</p> <p>Accidents &amp; Malfunctions- Accidental spills of hazardous materials on the Brucejack Access Rd. and resulting environmental contamination (general public);</p> <p>Consultation- Better outreach required to notify more Nisga'a citizens about community meetings and provide informational materials in advance of meetings;</p> <p>Employment/Economic Opportunities- Hire Nisga'a to staff the Project at all levels and all types of jobs;</p> <p>Employment/Economic Opportunities- Select the union for contracting so Nisga'a Villages can start speaking with them proactively;</p> <p>Fish- Effects to Brucejack Lake, including downstream quality and fish as a result of tailings deposition;</p> <p>Fish- Presence of fish in Brucejack Lake;</p> <p>Hydrogeology- Number of underground water tables that will be affected;</p> <p>Tailings Management- Capacity of Brucejack Lake to contain the total volume of tailings;</p> <p>Tailings Management- Rationale for selecting this method of tailings management;</p> <p>Tailings Management- Sub-aqueous deposition of tailings in Brucejack Lake (water contamination);</p> <p>Water Quality- Effects to Brucejack Lake, including downstream quality and fish as a result of tailings deposition;</p> <p>Water Quality- Long-term effects of tailings management in Brucejack Lake;</p> <p>Water Quality- Potential effects to and mitigation and management measures for Nass River, Bowser River, and Bowser Lake;</p> <p>Water Quality- Prevention of chemical leaching in Brucejack Lake from tailings; and</p> <p>Water Quality- Will discharged water be treated to a higher quality than the water pumped out from the underground workings?</p> |
|                            | 11/26/2013 4:30 PM | Open House           | Stewart DAIR Open House  | One of five open houses in northwest BC hosted by BC EAO and attended by Pretivm. Pretivm displayed nine posters describing the Project and baseline studies being conducted for the EA. BC EAO displayed two posters describing the EA process and opportunities for public comment. Pretivm provided coffee and refreshments. Approximately 20 people attended. Comments summarized in stakeholder comments and included in notes. Pretivm also displayed an information booklet about the Project, large maps of the Project area, copies of the Aboriginal Consultation Plan and Public Consultation Plan, and copies of the draft AIR, and provided feedback forms and an anonymous box for the public to comment on the Project and evaluate the open house format.   | <p>Employment/Economic Opportunities- General Interest;</p> <p>Infrastructure &amp; Services- Potential impacts to Stewart's infrastructure and health services; and</p> <p>Water Quality- Impacts to harbour near Stewart (District of Stewart).</p>  |

\* Draft responses to these issues are included in the issues tracking table in Appendix B.



**Appendix A. Summary of Communications with the Public – until March 31, 2014**

| Stakeholder Group              | Communication Date  | Communication Method | Communication Subject      | Communication Summary   | Issues Raised*   |
|--------------------------------|---------------------|----------------------|----------------------------|---|--|
| <b>General Public (cont'd)</b> |                     |                      |                            |   |  |
|                                | 11/27/2013 4:00 PM  | Meeting              | Hazelton DAIR Open House   | One of five open houses in northwest BC hosted by BC EAO and attended by Pretivm. Pretivm displayed nine posters describing the Project and baseline studies being conducted for the EA. BC EAO displayed two posters describing the EA process and opportunities for public comment. Pretivm provided refreshments and coffee. Approximately 45 people attended. Comments summarized in stakeholder comments and included in notes. Pretivm also displayed an information booklet about the Project, large maps of the Project area, copies of the Aboriginal Consultation Plan and Public Consultation Plan, and copies of the draft AIR, and provided feedback forms and an anonymous box for the public to comment on the Project and evaluate the open house format. | Consultation- Would like additional research to be presented at open houses (general public);<br>Employment/Economic Opportunities- General Interest;<br>Fish- Effects to Brucejack Lake, including downstream quality and fish as a result of tailings deposition;<br>Tailings Management- Sub-aqueous deposition of tailings in Brucejack Lake (water contamination); and<br>Water Quality- Effects to Brucejack Lake, including downstream quality and fish as a result of tailings deposition. |
|                                | 11/28/2013 10:30 AM | Meeting              | Dease Lake DAIR Open House | One of five open houses in northwest BC hosted by BC EAO and attended by Pretivm. Pretivm displayed nine posters describing the Project and baseline studies being conducted for the EA. BC EAO displayed two posters describing the EA process and opportunities for public comment. Pretivm provided coffee and refreshments. Eight people attended. Comments summarized in stakeholder comments and included in notes. Pretivm also displayed an information booklet about the Project, large maps of the Project area, copies of the Aboriginal Consultation Plan and Public Consultation Plan, and copies of the draft AIR, and provided feedback forms and an anonymous box for the public to comment on the Project and evaluate the open house format.            | Employment/Economic Opportunities- General Interest;<br>Rights and Title- Tahltan territory in relation to the Project (general public); and<br>Tailings Management- General.  |
|                                | 11/28/2013 5:00 PM  | Open House           | Iskut DAIR Open House      | One of five open houses in northwest BC hosted by BC EAO and attended by Pretivm. Pretivm displayed nine posters describing the Project and baseline studies being conducted for the EA. BC EAO displayed two posters describing the EA process and opportunities for public comment. Pretivm provided a formal dinner in Iskut. Nine people attended. Comments summarized in stakeholder comments and included in notes. Pretivm also displayed an information booklet about the Project, large maps of the Project area, copies of the Aboriginal Consultation Plan and Public Consultation Plan, and copies of the draft AIR, and provided feedback forms and an anonymous box for the public to comment on the Project and evaluate the open house format.            | Employment/Economic Opportunities- General Interest;<br>Employment/Economic Opportunities- How many Tahltan are working at the Project; and<br>Fish- Presence of fish in Brucejack Lake.   |

\* Draft responses to these issues are included in the issues tracking table in Appendix B.

**Appendix A. Summary of Communications with the Public – until March 31, 2014**

| Stakeholder Group                              | Communication Date | Communication Method  | Communication Subject  | Communication Summary   | Issues Raised*   |
|--|--------------------|-----------------------|--|---|--|
| <b>General Public (cont'd)</b>                 |                    |                       |  |   |  |
|  | 12/3/2013 12:00 AM | Feedback/Comment Form | Public Comment (Resident, Smithers)                            | A resident of Smithers submitted an online comment during the Draft AIR Public Comment Period. See stakeholder comment for summary. Full comment on ePic, here: <a href="http://a100.gov.bc.ca/appsdata/epic/documents/p395/1386714861665_9ce23d41acf6ad56050e655743eb04a04b2936cc97a313a2c00a652fd10133bf.pdf">http://a100.gov.bc.ca/appsdata/epic/documents/p395/1386714861665_9ce23d41acf6ad56050e655743eb04a04b2936cc97a313a2c00a652fd10133bf.pdf</a> | Accidents & Malfunctions- Will erosion control and emergency response plans address potential storm events that could exceed 100-year maximums?;<br>Climate- Greenhouse gas emissions should get a full "lifecycle" accounting, including all mine related activities;<br>Cumulative Effects- Methodology for assessment of cumulative effects;<br>Fish- Alteration, disruption, or destruction of fish habitat;<br>Fish- Assessment boundaries are inadequate to assess eulachon in the Nass and Unuk rivers (general public);<br>Fish- Transboundary Effects via Sulphurets Creek and Unuk River;<br>Project Closure- Adequacy of upfront bonding to cover reclamation costs, monitoring, and maintenance;<br>Tailings Management- Rationale for selecting this method of tailings management;<br>Vegetation and Soils- Plan for re-vegetating road cutbanks and cleared right-of-ways;<br>Vegetation and Soils- Terrestrial environment theme should include avalanche track ecosystems as a valued subcomponent (general public);<br>Water Quality- Baseline information about the limnology, hydrology, and aquatic resources of Brucejack Lake needed and baseline (ideally pre-exploration) data for Bowser Lake; and<br>Water Quality-Transboundary Effects via Sulphurets 4Creek and Unuk River (general public). |
| <b>Gitsegukla Elementary School</b>            |                    |                       |  |   |  |
|  | 11/20/2013 2:46 PM | Email                 | Invitation to an Open House on the Brucejack Gold Mine Project | Pretivm invited stakeholders to public open houses, held from Nov. 25-28, 2013.   | N/A  |
| <b>Gitxsan Wet'suwet'in Education Facility</b> |                    |                       |  |   |  |
|  | 11/20/2013 2:46 PM | Email                 | Invitation to an Open House on the Brucejack Gold Mine Project | Pretivm invited stakeholders to public open houses, held from Nov. 25-28, 2013.   | N/A  |
| <b>John Field Elementary School (Hazelton)</b> |                    |                       |  |   |  |
|  | 11/20/2013 2:46 PM | Email                 | Invitation to an Open House on the Brucejack Gold Mine Project | Pretivm invited stakeholders to public open houses, held from Nov. 25-28, 2013.   | N/A  |
| <b>Last Frontier Heliskiing</b>                |                    |                       |  |   |  |
|  | 8/22/2012 12:00 AM | Interview             | Land Use Interview - Last Frontier Heliskiing                  | Land use interview by phone with Last Frontier Heliskiing.  | Guiding/Outfitting- Access road will increase snowmobile traffic in winter-negative for business;<br>Guiding/Outfitting- Brucejack Access Rd. will be built over two of company's best runs;<br>Guiding/Outfitting- Increased helicopter traffic posing safety concerns for Last Frontier's helicopters (need for flight coordination); and<br>Guiding/Outfitting- Last Frontier was not consulted prior to access road construction.  |

\* Draft responses to these issues are included in the issues tracking table in Appendix B.

**Appendix A. Summary of Communications with the Public – until March 31, 2014**

| Stakeholder Group   | Communication Date  | Communication Method | Communication Subject  | Communication Summary   | Issues Raised*   |
|---|---------------------|----------------------|--|---|--|
| <b>Last Frontier Heliskiing (cont'd)</b>                    |                     |                      |  |   |  |
|   | 10/31/2012 1:00 PM  | Meeting (Vancouver)  | Road Access  | Pretivm met with Last Frontier Heliskiing to discuss restricted access to the Brucejack Access Road and helicopter flight coordination.   | Guiding/Outfitting- Access road will increase snowmobile traffic in winter-negative for business; and<br>Guiding/Outfitting- Increased helicopter traffic posing safety concerns for Last Frontier's helicopters (need for flight coordination).               |
|   | 11/20/2013 2:46 PM  | Email                | Invitation to an Open House on the Brucejack Gold Mine Project | Pretivm invited stakeholders to public open houses, held from Nov. 25-28, 2013.   | N/A  |
| <b>Milligan Outfitting Ltd. (Coast Mountain Outfitters)</b> |                     |                      |  |   |  |
|   | 8/24/2012 10:00 AM  | Interview            | Land Use Interview - Milligan Outfitting                       | Land use phone interview with Milligan Outfitting Ltd.  | Guiding/Outfitting- Business could be negatively impacted if new road build from Bowser is restricted access. Would prefer to at least be able to walk up road with clients; and<br>Guiding/Outfitting- Helicopters as result of mining making bears nocturnal |
|   | 1/10/2013 1:33 PM   | Email                | Brucejack Goat Survey Results                                  | Pretivm provided Milligan Outfitting Ltd. with the results of Pretivm's recent goat surveys.  | N/A  |
|   | 8/13/2013 12:00 AM  | Phone                | Firearm Use Near Brucejack Access Rd.                          | Pretivm called Milligan Outfitting Ltd. to request that there be no firearms used in proximity to the Brucejack access road, including a request for no shooting in the direction of the road. Milligan Outfitting will happily oblige and do not lead hunts anywhere near the road.                                | N/A  |
|   | 10/21/2013 3:51 PM  | Email                | Use of Navigable Waters in the Brucejack Project Area          | Pretivm provided Milligan Outfitting Co. Ltd. with background information on Brucejack Project (including a map), as well as a questionnaire on navigable water use in the Project area. This is follow-up to a 2012 interview regarding land use in the Project area.  | N/A  |
|   | 10/24/2013 12:00 AM | Phone                | Navigable Waters   | Pretivm left a message for guide outfitter Milligan Outfitting Ltd. requesting opportunity to ask follow-up questions to the land use interview conducted for the Brucejack Project in 2012. The follow up questions pertained to use of waterways in the Project area for navigation.                              | N/A  |
|   | 11/20/2013 2:46 PM  | Email                | Invitation to an Open House on the Brucejack Gold Mine Project | Pretivm invited stakeholders to public open houses, held from Nov. 25-28, 2013.   | N/A  |
|   | 11/21/2013 11:07 AM | Email                | Brucejack Gold Mine Project Open House materials               | Pretivm provided Milligan Outfitting Ltd. with materials that would be displayed by Pretivm at open houses: an info booklet, a poster display, and a feedback form. The materials were provided via a YouSendIt link. Pretivm also provided information on the public comment period on the dAIR, hosted by BC EAO. | N/A  |
| <b>Misty Mountain Outfitters</b>                            |                     |                      |  |   |  |
|   | 1/11/2013 12:00 AM  | Interview            | Land Use Interview- Misty Mountain Outfitters                  | Land use interview by phone with tenure holder 60166 (backcountry recreation and sports hunting).   | N/A  |
|   | 10/21/2013 4:06 PM  | Email                | Use of Navigable Waters in the Brucejack Project Area          | Pretivm provided Misty Mountain Outfitters with background information (and a map) on Brucejack Project, as well as a questionnaire on navigable water use in the Project area. This is follow-up to a 2012 interview regarding land use in the Project area.   | N/A  |
|   | 11/20/2013 2:46 PM  | Email                | Invitation to an Open House on the Brucejack Gold Mine Project | Pretivm invited stakeholders to public open houses, held from Nov. 25-28, 2013.   | N/A  |

\* Draft responses to these issues are included in the issues tracking table in Appendix B.

**Appendix A. Summary of Communications with the Public – until March 31, 2014**

| Stakeholder Group                            | Communication Date | Communication Method | Communication Subject  | Communication Summary  | Issues Raised*  |
|--|--------------------|----------------------|--|--|---|
| <b>New Hazelton Elementary</b>               |                    |                      |  |  |   |
|  | 11/20/2013 2:46 PM | Email                | Invitation to an Open House on the Brucejack Gold Mine Project | Pretivm invited stakeholders to public open houses, held from Nov. 25-28, 2013.  | N/A   |
| <b>Northern Lights College</b>               |                    |                      |  |  |   |
|  | 11/20/2013 2:46 PM | Email                | Invitation to an Open House on the Brucejack Gold Mine Project | Pretivm invited stakeholders to public open houses, held from Nov. 25-28, 2013.  | N/A   |
| <b>Northwest Community College</b>           |                    |                      |  |  |   |
|  | 11/20/2013 2:46 PM | Email                | Invitation to an Open House on the Brucejack Gold Mine Project | Pretivm invited stakeholders to public open houses, held from Nov. 25-28, 2013.  | N/A   |
| <b>Regional District of Kitimat-Stikine</b>  |                    |                      |  |  |   |
|  | 3/28/2012 7:30 AM  | Meeting (Terrace)    | Project Update Meeting- City of Terrace                        | Pretivm provided a presentation on the Project to the Terrace Mayor and Council, at the Bear Country Inn in Terrace.   | Employment/Economic Opportunities- Inform local business community about project plans/schedules so they are positioned to respond. |
|  | 11/20/2013 2:46 PM | Email                | Invitation to an Open House on the Brucejack Gold Mine Project | Pretivm invited stakeholders to public open houses, held from Nov. 25-28, 2013.  | N/A   |
| <b>School District 54 (Bulkley Valley)</b>   |                    |                      |  |  |   |
|  | 11/20/2013 2:46 PM | Email                | Invitation to an Open House on the Brucejack Gold Mine Project | Pretivm invited stakeholders to public open houses, held from Nov. 25-28, 2013.  | N/A   |
| <b>Skeena Valley Expeditions</b>             |                    |                      |  |  |   |
|  | 9/7/2012 12:30 PM  | Interview            | Land Use Interview- Skeena Valley Expeditions                  | Land use interview by phone with Skeena Valley Expeditions (commercial tenure Tenure #6407801). Skeena Valley Expeditions was subsequently excluded from the Land Use EA since it is not operating with the Project Area.  | N/A   |
|  | 10/21/2013 3:43 PM | Email                | Use of Navigable Waters in the Brucejack Project Area          | Pretivm provided Skeena Valley Expeditions with Brucejack Project background information (and a map) and survey questions regarding navigability of waterways in the Project area. These questions are a follow-up to an earlier interview regarding land use near the proposed Project. | N/A   |
|  | 11/20/2013 2:46 PM | Email                | Invitation to an Open House on the Brucejack Gold Mine Project | Pretivm invited stakeholders to public open houses, held from Nov. 25-28, 2013.  | N/A   |
| <b>Smithers District Chamber of Commerce</b> |                    |                      |  |  |   |
|  | 11/20/2013 2:46 PM | Email                | Invitation to an Open House on the Brucejack Gold Mine Project | Pretivm invited stakeholders to public open houses, held from Nov. 25-28, 2013.  | N/A   |
| <b>Spey Lodge</b>                            |                    |                      |  |  |   |
|  | 6/22/2012 9:00 AM  | Interview            | Land Use Interview - Spey Lodge                                | Land use phone interview with Spey Lodge (Commercial Recreation Tenure- Fly Fishing).  | Wildlife - Bears in the Bell-Iving valley becoming habituated due to increase in people in area.                                    |
|  | 10/21/2013 4:03 PM | Email                | Use of Navigable Waters in the Brucejack Project Area          | Pretivm provided Spey Lodge with background information (and a map) on Brucejack Project, as well as a questionnaire on navigable water use in the Project area. This is follow-up to a 2012 interview regarding land use in the Project area.   | N/A   |

\* Draft responses to these issues are included in the issues tracking table in Appendix B.

**Appendix A. Summary of Communications with the Public – until March 31, 2014**

| Stakeholder Group                               | Communication Date  | Communication Method | Communication Subject  | Communication Summary   | Issues Raised*  |
|---|---------------------|----------------------|--|---|---|
| <b>Spey Lodge (cont'd)</b>                      |                     |                      |  |   |   |
|   | 10/24/2013 12:00 AM | Phone                | Phone Call to Review Navigable Waters Questions                | Pretivm left a message for Spey Lodge (commercial license tenure holder), requesting an opportunity to ask follow-up questions to the land use interview conducted for the Brucejack Project in 2012. New questions would focus on potential use of waterways in the Project area for navigation.   | N/A   |
|   | 11/20/2013 2:46 PM  | Email                | Invitation to an Open House on the Brucejack Gold Mine Project | Pretivm invited stakeholders to public open houses, held from Nov. 25-28, 2013.   | N/A   |
| <b>Terrace and District Chamber of Commerce</b> |                     |                      |  |   |   |
|   | 11/20/2013 2:46 PM  | Email                | Invitation to an Open House on the Brucejack Gold Mine Project | Pretivm invited stakeholders to public open houses, held from Nov. 25-28, 2013.   | N/A   |
| <b>Terrace Economic Development Authority</b>   |                     |                      |  |   |   |
|   | 1/25/2012 9:30 AM   | Meeting (Terrace)    | Business Development Meeting-City of Terrace                   | Meeting in Vancouver to update on the Project and discuss business development opportunities and available services in Terrace. Discussed sourcing personnel, supplies, and equipment out of Terrace.   | N/A   |
|   | 3/28/2012 7:30 AM   | Meeting (Terrace)    | Project Update Meeting- City of Terrace                        | Pretivm provided a presentation on the Project to the Terrace Mayor and Council, at the Bear Country Inn in Terrace.  | Employment/Economic Opportunities- Inform local business community about project plans/schedules so they are positioned to respond.                       |
|   | 11/20/2013 2:46 PM  | Email                | Invitation to an Open House on the Brucejack Gold Mine Project | Pretivm invited stakeholders to public open houses, held from Nov. 25-28, 2013.   | N/A   |
| <b>Town of Smithers</b>                         |                     |                      |  |   |   |
|   | 11/16/2011 7:00 AM  | Meeting (Smithers)   | Project Introduction-Town of Smithers                          | Pretivm provided a presentation on the Project to Smithers Mayor and Council in Smithers. Discussion followed, including questions/comments dealing with local skills development, Aboriginal involvement, Project details.   | Consultation- Would like to tour the site.  |
|   | 3/28/2012 4:45 PM   | Meeting (Smithers)   | Project Update Meeting- Mayor of Smithers                      | Pretivm provided a presentation on the Project to the Mayor of Smithers. Mayor Bachrach expressed concern that fly in-fly out operations would preclude local sourcing of labour, supplies and services and noted a population loss in most northern communities due to decline of forestry and mine closures.  | Employment/Economic Opportunities- Concern that fly in-fly out operations will preclude sourcing labour, supplies and services from the northwest region. |
|   | 11/29/2012 10:30 AM | Meeting (Smithers)   | Project Update Meeting- Town of Smithers                       | Pretivm provided a presentation on the Project Description to the Smithers Mayor and Council. Discussion ensued about the Bulkley Valley Research Centre Conference and how there were insufficient industry representatives to help promote socially responsible development and how to make social choices on a regional scale that balance benefits and risks. | N/A   |
|   | 11/20/2013 2:46 PM  | Email                | Invitation to an Open House on the Brucejack Gold Mine Project | Pretivm invited stakeholders to public open houses, held from Nov. 25-28, 2013.   | N/A   |
| <b>Village of Hazelton</b>                      |                     |                      |  |   |   |
|   | 11/20/2013 2:46 PM  | Email                | Invitation to an Open House on the Brucejack Gold Mine Project | Pretivm invited stakeholders to public open houses, held from Nov. 25-28, 2013.   | N/A   |

\* Draft responses to these issues are included in the issues tracking table in Appendix B.

## *Appendix B*

*Public Issues Tracking Table – until March 31, 2014*

## Appendix B. Public Issues Tracking Table - until March 31, 2014

| Issue   | Pretivm Response*   | Issue Raised By |
|---|---|-----------------|
| Aboriginal- Relation of exploration activities and project to the Nass River and Nass Area.   | The primary mine site, including underground development, mine site operations camp, and processing facility will be located just outside of the western edge of the Nass Area, adjacent to Brucejack Lake. Several ancillary components of the Project will be located within the Nass Area, including the majority of the access road, transmission line, aerodrome, and transfer station. The Brucejack Access Road, which connects the Project with Highway 37 about 30 km south of Bell II, runs east-west through the western portion of the Nass Area, as defined by the Nisga'a Final Agreement. The Brucejack Access Road will be used to transport personnel, equipment and concentrate. The proposed transmission line from the Project to Long Lake Hydroelectric Project, which is currently under construction near Stewart, passes north-south through the Nass Area.  | Public          |
| Accidents & Malfunctions- Accidental spills of hazardous materials on the Brucejack Access Rd. and resulting environmental contamination.       | A risk analysis of 430 potential accidents and malfunctions identified spills as the result of accidents as a medium risk. Chapter 30, Accidents and Malfunctions, addresses the accidental spills of hazardous materials on Brucejack Access Rd. Pretivm follows all regulatory standards pertaining to the transport of hazardous goods on all roads. Pretivm's policies and practices reflect preventative, mitigation, clean-up, and follow-up measures to deal with potential spills. Preventative measures include: road design, maintenance and reporting, driver training and monitoring, vehicle inspection and maintenance, and preventative driving and scheduling. Mitigation and clean-up measures include; load monitoring, spill protocols, spill kits, emergency response procedures specific to load, and notification of authorities and stakeholders. Follow-up measures include; environmental monitoring and further remediation if warranted. Specific measures for prevention, mitigation, and clean-up are detailed in the following management plans (Chapter 27, Environmental Management and Monitoring Plans): Emergency Response Plan (Section 27.6), Hazardous Materials Management Plan (Section 27.7), Spill Prevention and Response Plan (Section 27.14), and Transportation and Access Management Plan (27.16).   | Public          |
| Accidents & Malfunctions- Will erosion control and emergency response plans address potential storm events that could exceed 100-year maximums? | Potential effects to the Project related to floods, including measures that will be in place to mitigate potential effects, are discussed in Section 31.3.2 of Chapter 32, Effects of the Environment on the Project. A key aspect of minimizing impact to the project and environment related to extreme events is design criteria for water management features. Culverts along the access road are designed to discharge a 10-year storm event without static head (i.e., assuming no standing water) at the entrance, and to discharge a 100-year storm event utilizing available head at the entrance (assuming standing water; Cypress Forest Consultants 2011; Tetra Tech 2013- Appendix 5-A of the Application/EIS). Water management features around the mine site, including drainage and diversion ditches as well as a contact water collection pond will be designed to convey a 200 year event. Other flood-related mitigation measures include supplying the water treatment plant with pumps of sufficient size to move ponded water during extreme events. Infrastructure will be monitored for signs of failure after large rain events. Alternative transportation (e.g. helicopter) will be used if access roads and bridges are damaged and closed due to flooding. A flood hazard assessment of potentially flood-prone areas will be made to assess the appropriate types of mitigation measures. Surface water control measures are being addressed in Section 27.19, Water Management Plan, of Chapter 27 of the Application/EIS, Environmental Management and Monitoring Plans. | Public          |



## Appendix B. Public Issues Tracking Table – until March 31, 2014

| Issue   | Pretivm Response*  | Issue Raised By |
|---|--|-----------------|
| Climate- Greenhouse gas emissions should get a full “lifecycle” accounting, including all mine related activities.  | <p>Project greenhouse gas emissions are estimated in Chapter 12, Assessment of Potential Climate Effects, and include emissions from direct emissions from Project equipment and activities (Scope 1), indirect emissions from imported electricity use (Scope 2), and indirect emissions from third party equipment (Scope 3) as well as those from net land use change. These estimates consider all Project related activities and components during the Construction and Operation phases (Closure and Post-Closure phases were scoped out) including the mine site, transmission line, and use of the access road from the mine site to its junction with Highway 37. Emissions mitigation methods are included in the Air Quality Management Plan, Section 27.X.</p> <p>The residual effects assessment for climate effects concludes that the rise in atmospheric GHG levels is not significant during any Project phase. Scope 1 GHG emissions are expected to be slightly above the federal reporting threshold during the two year construction phase, but emissions are expected to be lower than the federal reporting threshold during the 22-year Mine Life.</p> | Public          |
| Consultation- Better outreach required to notify more Nisga’a citizens about community meetings and provide informational materials in advance of meetings. | <p>Pretivm placed notices advertising the dates of the open houses, and the locations and timing of the public comment period in the following newspapers for a three-week period: Northern Connector, Terrace Standard, and Interior News. Pretivm notified NLG and the four village governments of the open house in New Aiyansh and provided advertising materials for posting in the villages including small posters. Pretivm will continue to work with NLG and village governments for better outreach in advance of the next anticipated open house, which will be likely be following submission of the Application/EIS.</p>  | Public          |
| Consultation- Keep communities and businesses apprised of projects and how they are progressing.  | <p>The Regional District of Kitimat-Stikine (RDKS) is a BC EAO Working Group participant and receives all project related updates from BC EAO. Pretivm has also met with City of Terrace Mayor, and Mayor and Council, on several occasions (see Section X of Chapter 3, Information Distribution and Consultation for a description of consultation activities with local governments). Pretivm will implement an Engagement Strategy under which regular and formal communications will take place with local and Aboriginal governments within the Regional Study Area (RSA) and Local Study Area (LSA) to describe economic details of the Project such as employment statistics, procurement spends, including a break-down of LSA spends, and types of goods and services purchased. Information will assist communities in their economic planning activities. Further, expected Project benefits relate to Project regional spending and employment, as well as spending and employment in BC and Canada (Section 1.9 of Chapter 1, Project Overview).</p>   | City of Terrace |
| Consultation- Would like additional research to be presented at open houses.  | <p>During the first set of Open Houses for the Draft AIR, Pretivm displayed eight large posters describing the company and the Project. An information booklet was also available for the public, containing much of the information displayed on the posters. Some of this information described the socio-economic and environmental baseline studies underway. Large maps, and copies of the Draft AIR were also on display. At the next round of Open Houses following submission of the Application/EIS additional information will be available for presentation including some of the key findings from the environmental assessment process and some of the mitigations and management plans. The Application/EIS itself will be available to the public, along with baseline study reports, on the BC EAO project information centre (e-PIC) site.</p>  | Public          |

**Appendix B. Public Issues Tracking Table – until March 31, 2014**

| Issue  | Pretivm Response*   | Issue Raised By         |
|--|---|-------------------------|
| <p>Consultation- Would like to tour the site.</p>  | <p>The RDKS represents local government on the BC EAO Project Working Group. The Working Group toured the Project site on September 5, 2013; however, RDKS was not able to attend.</p>  | <p>Town of Smithers</p> |
| <p>Cumulative Effects- Methodology for assessment of cumulative effects.</p>   | <p>The potential for cumulative effects arises when the residual effects of a project affect (i.e., overlap and interact with) the same resource/receptor that is affected by the residual effects of other historic, existing or reasonably foreseeable future projects or activities. The cumulative effects assessment considers the potential environmental, economic, health, social, and heritage cumulative effects of the Project. The cumulative effects assessment for the Project has been conducted following standard guidance as provided by the Canadian Environmental Assessment Agency and the BC EAO including the following documents <i>Operational Policy Statement: Addressing Cumulative Environmental Effects under the Canadian Environmental Assessment Act, 2012</i> (Canadian Environmental Assessment Agency 2013) and the <i>BC EAO User Guide</i> (BC EAO 2010). The cumulative effects methodology for the Project is described in Section 6.9 of the Application/EIS. Results of the cumulative effects assessment on individual intermediate components and receptor Valued Components are presented in Chapters 7 through 25 of the Application/EIS.</p>   | <p>Public</p>           |
| <p>Employment/Economic Opportunities- Concern that fly in-fly out operations will preclude sourcing labour, supplies and services from the northwest region.</p> | <p>Pretivm will implement a Workforce Sourcing Plan that will provide the first opportunity for employment to local and regional residents (Section 19.5.1 of Chapter 19, Assessment of Potential Economic Effects). Hiring practices will follow BC and federal legislation and regulations with a focus on hiring local and regional residents, where possible, in consultation with local Aboriginal groups and LSA communities. Pretivm will adopt a number of strategies that consider the needs of workers from regional and Aboriginal communities and are aimed at increasing the level of employment participation in the Project. The Project will encourage the involvement of local and regional businesses interested in the opportunities to directly and indirectly supply the Project to maximize the benefits within the region. Suppliers will be selected based on location, quality, price, and delivery (among other criteria) with the standards for purchasing determined during the initial stages of the Project. The Procurement Strategy to be developed by the Proponent is expected to encourage the procurement of goods and services from both local and Aboriginal-owned suppliers, where such goods and services are competitive in quality and price.</p> | <p>Town of Smithers</p> |

## Appendix B. Public Issues Tracking Table – until March 31, 2014

| Issue   | Pretivm Response*  | Issue Raised By  |
|---|--|--|
| Employment/Economic Opportunities- General Interest.  | <p>The Project will provide substantial employment and numerous business opportunities. Through this, it will contribute to household income, and regional and provincial GDP, as well as regional, provincial and federal tax revenue. All Project benefits are described in detail in Section 1.9 of Chapter 1 (Project Overview) of Application/EIS. In general, the Project is expected to create 3,912 person-years of direct (on-site), indirect and induced employment in BC during Construction (estimated duration of 2 years), which will contribute approximately \$308 million to household income. The provincial GDP is expected to benefit by \$395 million, whereas regional, provincial and federal government revenue will increase by approximately \$64 million. During Operations (estimated duration of 22 years), approximately 28,956 person-years of direct (on-site), indirect and induced employment is expected to be created in BC with household income of \$2,331 million. Provincial GDP is expected to increase by \$2,914 million, whereas regional, provincial and federal tax revenue will increase by approximately \$527 million. Construction and Operation of the Project will bring jobs mainly in construction and mining; however, other industries in BC will also benefit, including, but not limited to: professional, scientific, and technical services, accommodation and food services, manufacturing, transportation, warehousing, wholesale and trade.</p> | Public   |
| Employment/Economic Opportunities- Hire Nisga’a to staff the Project at all levels and all types of jobs.                           | <p>Pretivm will adopt a number of policies or company strategies that consider the needs of workers from regional and Aboriginal communities and are aimed at increasing the level of employment participation in the Project. Workforce training will play an essential role especially in the economic RSA. A Workforce Training Strategy will be implemented with training and skill development offered to Project employees across departments, including on-the job training, in order to support on-going enhancement of worker skillsets and internal job advancement (Section 19.5.1. of Chapter 19, Assessment of Potential Economic Effects). Further, Nisga’a Nation and local First Nations will be engaged to participate in demand-driven development of training programs for Aboriginal workers. Pretivm will partner with Aboriginal communities through the pursuit of Impact Benefit Agreements or other forms of agreements to work with First Nations and Nisga’a Nation</p>   | Public   |
| Employment/Economic Opportunities- How many Tahltan are working at the Project.   | <p>To date, Pretivm has engaged the Tahltan Nation Development Corporation (TNDC) for road construction work. Pretivm will adopt a number of policies or company strategies that consider the needs of workers from regional and Aboriginal communities and are aimed at increasing the level of employment participation in the Project.</p>  | Public   |
| Employment/Economic Opportunities- Inform local business community about project plans/schedules so they are positioned to respond. | <p>An Engagement Strategy will be implemented that clearly communicates the Project plans, schedule, and hiring and procurement needs to the local communities and across the RSA. In addition, a Procurement Strategy will be developed that includes specific activities to engage local businesses, including early communication of procurement opportunities.</p>   | City of Terrace;<br>Regional District of Kitimat-Stikine; Terrace Economic Development Authority |

## Appendix B. Public Issues Tracking Table – until March 31, 2014

| Issue  | Project Response*   | Issue Raised By |
|--|---|-----------------|
| Fish- Alteration, disruption, or destruction of fish habitat.  | An assessment of potential effects to fish habitat was completed in the environmental assessment application (Chapter 15, Assessment of Potential Fish and Fish Habitat Effects). The proposed Project will not result in fish habitat loss, therefore <i>Fisheries Act</i> authorizations will not be required for the project (Sections 15.5.1.2 and 15.6.4 of Chapter 15). Brucejack Lake is not fish bearing (Section 15.3.4.2 of Chapter 15). Fish-bearing stream crossings are located at the Bowser River transmission line crossing and along the Brucejack access road from Highway 37. At the Bowser River transmission line crossing, the transmission line will be approximately 120 m above the high water mark and riparian vegetation will not be removed, therefore fish habitat will not be affected (Section 15.5.1.2). As the access road is an existing feature, no additional fish habitat alterations are expected during road maintenance and implementation of mitigation measures (Section 15.6.4).  | Public          |
| Fish- Assessment boundaries are inadequate to assess eulachon in the Nass and Unuk rivers.                 | Eulachon has not been identified as a Valued Component as its distribution is well downstream of the Project and potential Project effects. Identified Valued Components are presented in Section 15.4.1, and the rationalization for their inclusion is presented in Section 15.4.1.3 (Chapter 15, Assessment of Potential Fish and Fish Habitat). Within the Unuk River watershed, the distribution of eulachon is within the lower reach of the Unuk River sloughs, the Hooligan River, and Klahini River (tributaries of the Unuk River), more than 50 km downstream of Project related discharges. Any potential effects related to the Project will be addressed within the local and regional study areas identified in Figure 15.4-1 (Chapter 15). Similarly, within the Nass River watershed, the distribution of eulachon is within the lower reach of the Nass River, hundreds of kilometres downstream of any proposed Project components and is not within the mine site discharge receiving environment.  | Public          |
| Fish- Effects to Brucejack Lake, including downstream quality and fish as a result of tailings deposition. | <p>Previous fisheries sampling effort (Newhawk 1989; Price 2005) has shown that Brucejack Lake is not fish bearing (Section 15.3.4.2 of Chapter 15, Assessment of Potential Fish and Fish Habitat). This conclusion has been confirmed in recent sampling work (Rescan 2013). The first 1,300 m of Sulphurets Creek upstream from the confluence with the Unuk River is fish bearing (Dolly Varden present only). Upstream of this reach, a 200-m long series of cascades creates a barrier to fish migration. Over 9,700 electrofishing seconds of sampling, 45 hours of gillnetting, and 1,445 hours of minnow trapping effort have been undertaken upstream of the cascades, and no fish have been captured (Rescan 2013). As a result, Sulphurets Creek and its tributaries are confirmed as non-fish-bearing above this point.</p> <p>Water quality predictions are being modeled for the downstream receiving environment including the fish bearing reach of Sulphurets Creek and Unuk River. The results of the water quality model are predicted to conclude that there will be no change in water quality (and therefore fish) in the fish-bearing reach of Sulphurets Creek or the Unuk River. The provincial water quality guidelines for the protection of aquatic life are predicted to be achieved approximately 20 km upstream of fish-bearing receiving environments (Section 15.6.3 of Chapter 15).</p> | Public          |

## Appendix B. Public Issues Tracking Table – until March 31, 2014

| Issue  | Pretivm Response*  | Issue Raised By   |
|--|--|---|
| Fish- Presence of fish in Brucejack Lake.  | Previous fisheries sampling effort (Newhawk 1989; Price 2005) has shown that Brucejack Lake is not fish bearing (Section 15.3.4.2 of Chapter 15, Assessment of Potential Fish and Fish Habitat). This conclusion has been confirmed in recent sampling work (Rescan 2013). The first 1,300 m of Sulphurets Creek upstream from the confluence with the Unuk River is fish bearing (Dolly Varden present only). Upstream of this reach, a 200-m long series of cascades creates a barrier to fish migration. Over 9,700 electrofishing seconds of sampling, 45 hours of gillnetting, and 1,445 hours of minnow trapping effort have been undertaken upstream of the cascades, and no fish have been captured (Rescan 2013). As a result, Sulphurets Creek and its tributaries are confirmed as non-fish-bearing above this point. | Public  |
| Fish- Transboundary Effects via Sulphurets Creek and Unuk River.   | Water quality predictions are being modeled for the downstream receiving environment including the fish bearing reach of Sulphurets Creek and Unuk River. The results of the water quality model are anticipated to conclude that there will be no change in water quality (and therefore fish) in the fish-bearing reach of Sulphurets Creek or the Unuk River. The provincial water quality guidelines for the protection of aquatic life are predicted to be achieved approximately 20 km upstream of fish-bearing receiving environments (Section 15.6.3 of Chapter 15, Assessment of Potential Fish and Fish Habitat).  | Public  |
| Guiding/Outfitting- Access road will increase snowmobile traffic in winter- negative for business.   | The existing exploration access road (from Highway 37 to the Project site) is controlled at its intersection with Highway 37. The control point comprises a permanently staffed facility where each vehicle movement through the control point is checked and recorded. This level of access control will be maintained throughout the Construction and Operation phases of the Project. Access control will be maintained during the Closure and Post-closure phases, but permanent staffing will be scaled down appropriately.   | Last Frontier Heliskiing                                |
| Guiding/Outfitting- Brucejack Access Rd. will be built over two of company's best runs.  | Last Frontier Heliskiing mentioned this concern in a land use interview conducted August 22, 2012. On October 31, 2012 Pretivm met with Last Frontier Heliskiing to follow up and discuss their concerns. The Brucejack Access Road is not anticipated to cross any of the company's runs, and most of it is within the treeline.  | Last Frontier Heliskiing                                |
| Guiding/Outfitting- Business could be negatively impacted if new road build from Bowser is restricted access. Would prefer to at least be able to walk up road with clients. | The existing exploration access road (from Highway 37 to the Project site) is controlled at its intersection with Highway 37. The control point comprises a permanently staffed facility where each vehicle movement through the control point is checked and recorded. This level of access control will be maintained throughout the Construction and Operation phases of the Project. Access control will be maintained during the Closure and Post-closure phases, but permanent staffing will be scaled down appropriately. To uphold safety standards members of the public will not be permitted to utilize the road by foot or vehicle.  | Milligan Outfitting Ltd.<br>(Coast Mountain Outfitters) |
| Guiding/Outfitting- Helicopters as result of mining making bears nocturnal.  | Grizzly bears are most active during diurnal (daytime) and crepuscular (dawn and dusk) periods and do not generally respond to aircraft if flights remain 200 m above ground level. Helicopters will follow mitigation and management to remain above 200 m to 300 m elevation where safe to do so to mitigate this potential effect. Furthermore, helicopter use during operation of the Brucejack Gold Mine Project is expected to be limited with a maximum of 3 trips per day anticipated, causing minimal disturbance to bears and is not anticipated to result in changes to grizzly bear activity patterns.   | Milligan Outfitting Ltd.<br>(Coast Mountain Outfitters) |

## Appendix B. Public Issues Tracking Table – until March 31, 2014

| Issue   | Pretivm Response*  | Issue Raised By               |
|---|--|-------------------------------|
| Guiding/Outfitting- Increased helicopter traffic posing safety concerns for Last Frontier’s helicopters (need for flight coordination). | On October 31, 2012 Pretivm met with Last Frontier Heliskiing to discuss helicopter safety and will request that pilots communicate with Last Frontier Heliskiing pilots during operations to minimize disturbance.  | Last Frontier Heliskiing      |
| Guiding/Outfitting- Last Frontier Heliskiing was not consulted prior to access road construction.                                       | On October 31, 2012 Pretivm met with Last Frontier Heliskiing to discuss restricted access to the Brucejack Access Road. The gated road will address Last Frontier’s concern that a road could increase unrestricted snowmobile access in alpine areas.  | Last Frontier Heliskiing      |
| Guiding/Outfitting- Would like to establish an agreement enabling his guides to use portions of the exploration roads.                  | The existing exploration access road (from Highway 37 to the Project site) is controlled at its intersection with Highway 37. The control point comprises a permanently staffed facility where each vehicle movement through the control point is checked and recorded. This level of access control will be maintained throughout the Construction and Operation phases of the Project. Access control will be maintained during the Closure and Post-closure phases, but permanent staffing will be scaled down appropriately. To uphold safety standards members of the public will not be permitted to utilize the road by foot or vehicle.                      | Tenure Holder 601074          |
| Hunting/Trapping- Supportive of Project partly because of a belief that it will improve access to trapping areas if new road built.     | The existing exploration access road (from Highway 37 to the Project site) is controlled at its intersection with Highway 37. The control point comprises a permanently staffed facility where each vehicle movement through the control point is checked and recorded. This level of access control will be maintained throughout the Construction and Operation phases of the Project. Access control will be maintained during the Closure and Post-closure phases, but permanent staffing will be scaled down appropriately. Since the road is not accessible to the public, it will not increase access to trapping areas. No additional roads are being built. | Trapline Holder<br>TR0621T001 |

## Appendix B. Public Issues Tracking Table – until March 31, 2014

| Issue  | Pretivm Response*  | Issue Raised By                      |
|--|--|--------------------------------------|
| Hydrogeology- Number of underground water tables that will be affected.                                  | <p>The Hydrogeology Baseline Report (Appendix X) documenting the results of the baseline hydrogeology study for the project will include an evaluation of the pre-development location of groundwater in the study area. This will include an assessment of the pre-development water table in the mine site area.</p> <p>The Numerical Hydrogeologic Model (Appendix X) documenting the development and calibration of a three-dimensional numerical groundwater flow model for the project study area, and the results of predictive simulations using that model, will include a discussion of the predicted effects of the project on the groundwater elevations (i.e., on the water table) in the study area. A predictive hydrogeology study is included in Chapter 6 of the Application/EIS.</p> <p>The water table in the immediate vicinity of the proposed underground mine will be lowered by dewatering activities to facilitate mining and maintain a safe working environment. Modeling work completed to date indicates that at maximum dewatering effort, the elevation of the water table is drawn down approximately 400 m within the footprint of the underground workings. The majority of the drawdown is predicted to occur over an area 2-3 times the size of the footprint of the underground workings. This area of about 2 km by 3 km is limited to the Brucejack Lake watershed and the upper portion of the Brucejack Creek watershed.</p> <p>The numerical hydrogeologic model focuses specifically on the local and regional study areas associated with the mine site, and does not cover other areas of other project development, such as the Knipple Transfer Area and Bowser Aerodrome in the Bowser River watershed (i.e., the drawdown from dewatering of underground workings is not expected to affect water tables in these other areas of the Project).</p> | Public                               |
| Infrastructure & Services- Indirect impacts that may affect provision of services by regional districts. | <p>Consideration has been made by the proponent for potential impacts to infrastructure and services, including health services, in the RSA. The potential effects of the Project on community infrastructure, services and housing have been assessed and are presented in Chapter 20 (Assessment of Potential Social Effects) of the Application/EIS. Increased demand on infrastructure, services and housing will be mitigated through a Stakeholder Engagement Strategy, engagement with municipal and Aboriginal leadership, and capacity building for community planning (Section 20.5 of Chapter 20). Specific mitigations to address increased demands on health and social services within the RSA are also included in the Stakeholder Engagement Strategy as well as a Health and Safety Management Plan by Pretivm (Section 20.5). The combination of the above mitigation is designed to adequately address increased demand on infrastructure and services due to the Project within the RSA.</p>   | Regional District of Kitimat Stikine |



## Appendix B. Public Issues Tracking Table – until March 31, 2014

| Issue   | Pretivm Response*   | Issue Raised By |
|---|---|-----------------|
| Infrastructure- Potential impacts to Stewart’s infrastructure and health services.                    | <p>Consideration has been made by the proponent for potential impacts to infrastructure and services, including health services, in the RSA. The potential effects of the Project on community infrastructure, services and housing have been assessed and are presented in Chapter 20 (Assessment of Potential Social Effects) of the Application/EIS. Increased demand on infrastructure, services and housing will be mitigated through a Stakeholder Engagement Strategy, engagement with municipal and Aboriginal leadership, and capacity building for community planning (Section 20.5 of Chapter 20). Specific mitigations to address increased demands on health and social services within the RSA are also included in the Stakeholder Engagement Strategy as well as a Health and Safety Management Plan by Pretivm (Section 20.5). The combination of the above mitigation is designed to adequately address increased demand on infrastructure and services due to the Project within the RSA, including Stewart.</p>   | Public          |
| Project Closure- Adequacy of upfront bonding to cover reclamation costs, monitoring, and maintenance. | <p>The amount of the security to cover closure and reclamation is determined by the BC Chief Inspector of Mines. The amount of security that will be posted by the Proponent for the Project will be evaluated and adjusted over the life of the mine to reflect the nature of mining activities and to take into account reclamation completed at the Project site. Under subsection 10(7) of the Mines Act (1996), the Chief Inspector may impose changes to the security required with or without an application (for a permit) under the Act. Under subsection 10(5) of the Health, Safety and Reclamation Code for Mines in British Columbia it is stated that "if required by the Chief Inspector, the owner, agent, manager or permittee, in each year, must deposit security in an amount and form satisfactory to the chief inspector so that, together with the deposit under subsection 10(4) and calculated over the estimated life of the mine, there will be money necessary for mine reclamation, and to provide for protection of, and mitigation of damage to, watercourses and cultural heritage resources affected by the mine" (BC MEMPR 2008). Further information on estimating mine reclamation can be found in the Mine Reclamation Costing and Spreadsheet, Version 3.5.1, January 2006 published by the Ministry of Energy and Mines, Mining and Minerals Division.</p> | Public          |
| Rights and Title- Tahltan territory in relation to the Project.                                       | <p>The Project is located in the southern extremity of Tahltan territory. The eastern most segment of Brucejack Access Road, approximately the first 9 km of road branching off to the west of Highway 37, is within Tahltan territory. All other Project components are outside of the territory (see Figure X, in Chapter 26, First Nations Interests).</p>   | Public          |
| Tailings Management- Capacity of Brucejack Lake to contain the total volume of tailings.              | <p>The total volume of Brucejack Lake is 28,000,000 m3. It is expected that 5,669,000 m3 of tailings will be directed to Brucejack Lake over the 22 year mine life of the Project. At the end of the mine life, it is expected that the surface of the tailings will be more than 40 m below the surface of Brucejack Lake. A Tailings Management Plan has been developed to minimize potential adverse environmental effects of tailings disposal (Section 27.12 of Chapter 27, Environmental Management and Monitoring Plans). Approximately 8 Mt of the flotation tailings will be used in paste backfill in the underground workings, while the rest will be deposited in Brucejack Lake.</p>   | Public          |

## Appendix B. Public Issues Tracking Table – until March 31, 2014

| Issue  | Project Response*  | Issue Raised By |
|--|--|-----------------|
| Tailings Management- General.  | <p>The Project is expected to create about 16 Mt of flotation tailings over the life of the mine. A Tailings Management Plan has been developed to minimize potential adverse environmental effects of tailings disposal (Section 27.12 of Chapter 27, Environmental Management and Monitoring Plans). Approximately half of the total tailings generated will be re-deposited in the underground mine using a method called “paste backfill.” The tailings paste provides structural support for the underground mine and is a preferred method for long-term storage of tailings. Tailings that cannot be directed underground will be deposited at depth in Brucejack Lake via a pipeline. The tailings pipeline will be at 80 m and will allow a mound of tailings to grow over the terminus of the pipeline. The combination of discharging at depth and below the tailings mound will reduce the potential for tailings to enter the overlying water column. The tailings are not anticipated to be acid generating based on acid base accounting test work. Tailings management is described in section 5.11.2 of Chapter 5, Project Description. For the assessment of alternatives for the tailings disposal method see Section 4.4.5 of Chapter 4, Project Design and Alternatives Assessment.</p>   | Public          |
| Tailings Management- Rationale for selecting this method of tailings management. | <p>Tailings generated by the Project will be preferentially deposited back into the underground mine. However, due to space limitations, not all tailings will be able to be placed underground. Tailings that cannot be directed underground will be deposited at depth in Brucejack Lake. Brucejack Lake provides an ideal location for long-term tailings management. Brucejack Lake is more than 85 m deep at its deepest point. At the end of the mine life, it is expected that more than 40 m of water will overlie deposited tailings. This depth of water cover will help to ensure that (i) tailings will not exit the lake and disperse to downstream receiving environments and (ii) ensure that the potential for acid rock drainage is eliminated by maintaining anoxic conditions in the deposited tailings. These are two key considerations for tailings management. An alternative to storing the tailings in Brucejack Lake would be to construct a tailings storage facility on the surface. There are several benefits of using Brucejack Lake over an engineered tailings storage facility. Dams would need to be built for an engineered storage facility which would have the potential to fail over time; whereas a dam would not be required for tailings storage in Brucejack Lake. Surface storage facilities tend to result in seepage of poor quality water from within the tailings into underlying groundwater systems, which can be difficult to monitor and manage. Brucejack Lake is a natural groundwater discharge zone, such that the movement of water from the tailings would be into the overlying water column in the lake. Lake water quality is much more easily monitoring and managed, if required, than ground water. Furthermore, a surface storage facility would result in a larger overall footprint for the project. Tailings placed in Brucejack Lake will have an impact footprint in Brucejack Lake. However, Brucejack Lake is naturally a system with low productivity and does not contain any fish. The nearest fish habitat is located approximately 20 km downstream of Brucejack Lake at the mouth of Sulphurets Creek. An alternatives assessment for tailings storage is presented in Section 4.1, Project Design and Alternatives Assessment, of the Application/EIS. Predicted impacts to aquatics habitat and aquatics resources in Brucejack Lake is presented in Section 14.# of Chapter 14, Assessment of Potential Aquatic Resources Effects.</p> | Public          |

## Appendix B. Public Issues Tracking Table – until March 31, 2014

| Issue   | Pre-tivm Response*   | Issue Raised By |
|---|--|-----------------|
| Tailings Management- Sub-aqueous deposition of tailings in Brucejack Lake (water contamination).  | Brucejack Lake is the proposed site of sub-aqueous waste rock and tailings disposition. Any potential effects on surface water quality from sub-aqueous tailings deposition are predicted to be localized to Brucejack Lake (see Chapter 13, Assessment of Potential Surface Water Quality Effects, for further details). Further, water quality predictions were modeled for Brucejack Lake and the immediate downstream receiving environment (Chapter 13). The water quality model included tailings/waste rock deposition. The results of the water quality model conclude that there will be no change in water quality of downstream receiving waters (Brucejack Creek). Further, all points of discharge will be monitored and mitigated as required by standards outlined in the MMR (MMER; SOR/2002-222) and EMA permits.   | Public          |
| Vegetation and Soils- Plan for re-vegetating road cutbanks and cleared right-of-ways.   | Road cutbanks and cleared right of ways will be re-vegetated to avoid erosion and sedimentation, as well as, the introduction of invasive plants. Re-vegetation efforts will take into consideration successional processes, such as disturbance type e.g., avalanches, site history (e.g., flooding), site competition (e.g., light and soil moisture), and germination conditions (e.g., time of year, weather, elevation). This information is further detailed in the Ecosystem Management Plan (Chapter 29, Environmental Management and Monitoring Plans). A predominantly native seed mix is planned to be used for erosion control and revegetation of road cutbanks and cleared right-of-ways. A Closure and Reclamation Plan provided in the Application (Chapter 29) will provide additional detail with respect to reclamation of disturbed areas.   | Public          |
| Vegetation and Soils- Terrestrial environment theme should include avalanche track ecosystems as a valued subcomponent.   | The effects of the Project on avalanche track ecosystem extent and function are assessed as a valued component of alpine, parkland or forested ecosystems, depending on the biogeoclimatic (BEC) unit within which they occur. This evaluation is provided in the Assessment of Potential Terrestrial Ecology Effects (Chapter 16, Assessment of Potential Terrestrial Ecology Effects).   | Public          |
| Water Quality- Baseline information about the limnology, hydrology, and aquatic resources of Brucejack Lake needed and baseline (ideally pre-exploration) data for Bowser Lake. | No pre-exploration water quality data are available for Brucejack Lake, Brucejack Creek or Camp Creek. Monitoring began in 1987 to support a Stage 1 Impact Assessment for the Sulphurets Project proposed by Newhawk Gold Mines Ltd., whereas underground development began in autumn 1986. From that time onward watercourses within the Brucejack Watershed were affected by drainage from areas disturbed through surface activities, active (dewatering) or passive drainage from the adit, as well as reclamation activities (Newhawk 1989, Price 2005). Newhawk’s active mining and exploration ceased in 1990. Historical surface water quality data (1987 to 2001: Price 2005; Newhawk 1989) were incorporated into the environmental setting and assessment to more accurately constrain effects of previous mining and explorations from the proposed Project-related activities. Aquatic resources baseline data for Brucejack Lake was collected in 1988, 2012, and 2013. Water quality (general chemistry, nutrients, total and dissolved metals) data for Bowser Lake were collected in 2010 (appended to Chapter 13, Assessment of Potential surface Water Quality Effects). Aquatic Resources data for Bowser Lake was collected in 2010 (Sections 4 to 6 of Appendices 1 to 6 of the Cumulative Aquatic Resources Baseline Report, itself appended to Chapter 14, Assessment of Potential Aquatic Resources Effects.) Data from Bowser Lake is considered representative of pre-exploration baseline conditions as it is un-impacted by previous or past exploration activities. | Public          |

## Appendix B. Public Issues Tracking Table – until March 31, 2014

| Issue   | Project Response*  | Issue Raised By     |
|---|--|---------------------|
| Water Quality- Effects to Brucejack Lake, including downstream quality and fish as a result of tailings deposition. | Any potential effects on surface water quality from Project-related activities during construction, operation, closure and post-closure phases are predicted to be localized to Brucejack Lake (see Chapter 13, Assessment of Potential Surface Water Quality Effects, for further details). Monitoring and mitigation of the outflow of Brucejack Lake will be as required to meet discharge standards outlined in the MMER (MMER; SOR/2002-222) and EMA permits. Further, Brucejack Lake and Brucejack Creek downstream to the confluence of Sulphurets Creek (upstream of a 200-m long series of cascades creates a barrier to fish migration) are non-fish bearing. Due to this considerable distance, and because potential effects are anticipated to be restricted to Brucejack Lake, the Project is not predicted to cause an adverse effect on water quality, aquatic resources, and fish and fish habitat in mid and far-field fish bearing receiving environments (Sulphurets Creek downstream of fish barrier, and Unuk River). Assessment of potential effects to fish and fish habitat are specifically addressed in Chapter 15, Assessment of Potential Fish and Fish Habitat Effects. Monitoring of aquatic receiving environments will be designed and executed as to detect any potential changes in water quality, aquatic resources and, by extension, fish and fish habitat. Adaptive management and mitigation measures will be implemented to manage any potential effects as required (Chapter 29, Environmental Management and Monitoring Plans). | Public              |
| Water Quality- Impacts to harbour near Stewart.   | The Brucejack Project area is located 65 km north-northwest of Stewart within headwater tributary watersheds of the Unuk River and Nass Rivers. Thus, project effects on the harbour near Stewart are not anticipated. Gold and silver concentrate will be transported from the mine site to existing facilities for shipment to either Eastern Canada or overseas depending on the location of the purchaser of the concentrate, which is currently unknown. The Port of Stewart is one location that would be considered for concentrate shipment in the event that marine shipment is required. In this case, it is expected that the Brucejack concentrate would be accommodated by existing harbour facilities and marine traffic such that effects to the harbour near Stewart would not be impacted.  | District of Stewart |
| Water Quality- Long-term effects of tailings management in Brucejack Lake.  | Water treatment and monitoring of Brucejack Lake and its outflow will be as required to meet discharge standards outlined in the MMER (MMER; SOR/2002-222). Water quality predictions were modeled for Brucejack Lake and the immediate downstream receiving environment during Project operations, closure, post-closure phases (Chapter 13, Assessment of Potential Surface Water Quality Effects). The results of the water quality model conclude that there will be no effects to water quality in downstream receiving waters (Brucejack Creek) and therefore no water quality changes are predicted to occur in mid or far field-receiving environments (Sulphurets Creek and Unuk River) (Section 13.5.3, 13.5.2, Chapter 13, Assessment of Potential Surface Water Quality Effects).  | Public              |

## Appendix B. Public Issues Tracking Table – until March 31, 2014

| Issue  | Pretivm Response*  | Issue Raised By |
|--|--|-----------------|
| Water Quality- Potential effects to and mitigation and management measures for Nass River, Bowser River, and Bowser Lake.    | Pretivm acknowledges the importance of water quality within the Bowser River and Nass River Watersheds. Changes in water quality from typical operations are not predicted to occur in the Bowser or Nass River systems as there will be no project related surface discharges within these watersheds. Mine effluent including tailings and waste rock will be directed to Brucejack Lake, which is located in the Unuk River watershed which is not hydrologically connected to the Bowser River or Nass River watersheds. Project components located in the Bowser River watershed include a transmission line, transfer area, aerodrome, and access road. Affects to water quality related to these project components are not anticipated under normal operating conditions. Accidents or spills along the access road or at the transfer station could lead to local scale and temporary effects on these systems. Mitigation and management measures to reduce the likelihood of a spill and any resulting impacts are presented in Section 29.6: Emergency Response Plan, Section 29.7: Hazardous Materials Management Plan, Section 29.14: Spill Prevention and Response Plan, and Section 29.16 Transportation and Access Management Plan. Potential effects of accidents and spills are presented in Chapter 31 of the Application/EIS. | Public          |
| Water Quality- Prevention of chemical leaching in Brucejack Lake from tailings.  | Subaqueous placement of tailings into Brucejack Lake minimizes the potential for chemical leaching. This was confirmed by predictive water quality modeling (Section 13.5.3, 13.5.2, Chapter 13, Assessment of Potential surface Water Quality Effects). Thus no effects to water quality as a result of chemical leaching in Brucejack Lake from tailings deposition, nor in downstream receiving surface waters, are expected (Section 13.5.3, 13.5.2, Chapter 13).  | Public          |
| Water Quality- Will discharged water be treated to a higher quality than the water pumped out from the underground workings? | Seepage water from the underground mine will be sent directly to the water treatment plant for treatment before discharging into the receiving environment and will be of higher water quality than that which was pumped out from the underground workings. Priority of use for this treated water will be in the process plant. Some of this water will be discharged back into the mine workings with the paste backfill or into Brucejack Lake with the tailings. All points of discharge will be monitored and mitigated as required by standards outlined in the MMER (MMER; SOR/2002-222) and EMA permits.  | Public          |
| Water Quality-Transboundary Effects via Sulphurets Creek and Unuk River.   | Water quality predictions are being modeled for Brucejack Lake and the immediate downstream receiving environment, Brucejack Creek (Chapter 13, Assessment of Potential Surface Water Quality Effects). These waterbodies are the proposed receiving environments for the Project and are in the headwaters of Sulphurets Creek. The results of the water quality model are predicted to conclude that there will be no change in water quality of downstream receiving waters (Brucejack Creek) as a result of Project activities. Thus, the potential for any transboundary effects to occur (i.e. change in water quality 45 km downstream of the outflow of Brucejack Lake and Brucejack Creek) is considered extremely unlikely. However, monitoring of the far-field downstream watercourses will be designed and executed to detect any potential changes in water quality within the Unuk River as part of the Aquatics Environment Effects Monitoring and Management Program (AEMP); adaptive management and mitigation measures will be implemented to manage any potential effects on surface water quality, as required (AEMP, Chapter 29, Environmental Management and Monitoring Plans).   | Public          |

## Appendix B. Public Issues Tracking Table – until March 31, 2014

| Issue   | Pretivm Response*  | Issue Raised By |
|---|--|-----------------|
| Wildlife - Bears in the Bell-<br>Irving valley becoming<br>habituated due to increase in<br>people in area. | To mitigate the potential for bear habituation, attractants associated with the Project will be minimized through proper garbage and waste management, as outlined in the "Waste Management Plan" (Section X of Chapter 27, Environmental Management and Monitoring Plans). An "Environmental Management Plan for Bear, Marten, and Camp Hygiene" has been developed to minimize wildlife-human interaction and ensure safety of Project employees and prevent avoidable wildlife mortalities during Pretivm exploration activities and is planned to be implemented throughout the construction and operations phases. All staff will receive training during an initial orientation and thereafter on an annual basis, which will include a presentation on potential problem wildlife and directions for preventing interactions. | Spey Lodge      |

\*NOTE: Responses are currently in draft form and will be updated for inclusion in the final issues tracking tables that will appended to the Information Distribution and Consultation Chapter of the Application/EIS.

## REFERENCES

2002. *Metal Mining Effluent Regulations*, SOR/2002. C. 222.

Cypress Forest Consultants Ltd. 2011. *Access Plan, Brucejack Exploration Site*. Prepared for Pretium Resources Inc.: Terrace, BC.

ERM Rescan. 2014. *Brucejack Gold Mine Project: Cumulative Aquatic Resources Baseline Report*. Prepared for Pretivm Resources Inc. by ERM Rescan: Vancouver, BC.

Newhawk Gold Mines Ltd. 1989. *Stage I: Environmental and Socioeconomic Impact Assessment for the Sulphurets Property*. Vancouver, BC.

Price, W. 2005. *Case studies of ML/ARD assessment and mitigation: Placement of the sulphurets waste rock in Brucejack Lake*. Prepared for Mine Environment Neutral Drainage (MEND) Program.

Rescan. 2013. *KSM Project: Application for an Environmental Assessment Certificate/Environmental Impact Statement*. Prepared for Seabridge Gold Inc. by Rescan Environmental Services Ltd.: Vancouver, BC.

Tetra Tech. 2013. *Feasibility Study and Technical Report on the Brucejack Project*. Prepared for Pretium Resources Inc. by Tetra Tech: Stewart, BC.

## *Appendix C*

### *Notice of Open Houses and Invitation to Comment*

# Environmental Assessment of the Proposed Brucejack Gold Mine Project

## Open Houses *and* Invitation to Comment

Pretium Resources Inc. (Proponent) is proposing to develop the Brucejack Gold Mine Project, approximately 65 km north-northwest of Stewart, B.C. (proposed Project). The proposed Project would be an underground gold and silver mine with a production capacity of 2,700 tonnes per day.

The proposed Project is subject to review under British Columbia's *Environmental Assessment Act* and the *Canadian Environmental Assessment Act, 2012*.

The Proponent must obtain an environmental assessment certificate before any development can be undertaken on the proposed Project. However, prior to submission of an application for a certificate by the Proponent, the Environmental Assessment Office (EAO) of British Columbia must first approve Application Information Requirements.

The Application Information Requirements will specify the studies to be conducted and the detailed information to be provided by the Proponent in its application. EAO has now received draft Application Information Requirements from the Proponent and invites comments on this draft.

In order to provide information about the Application Information Requirements, and to receive comments from the public, EAO invites the public to attend an **Open House**. There will be five Open Houses, to be held as follows:

- at: **Gitmidiik Hall**  
**5216 Tait Ave.**  
**Gitlaxt'aamiks (New Aiyansh)**  
on: **Monday November 25, 2013**  
from: **4:30 p.m. to 8:00 p.m.**
- at: **Al Lawrence Memorial Centre**  
**804 Main St.**  
**Stewart**  
on: **Tuesday November 26, 2013**  
from: **4:30 p.m. to 8:00 p.m.**
- at: **St. Peter's Anglican Church**  
**4390 Government St.**  
**Hazelton**  
on: **Wednesday November 27, 2013**  
from: **4:00 p.m. to 7:30 p.m.**
- at: **Dease Lake Community Hall**  
**Dease Lake**  
on: **Thursday November 28, 2013**  
from: **10:30 a.m. to 1:00 p.m.**
- at: **Klappan Independent Day School- Gymnasium**  
**Iskut**  
on: **Thursday November 28, 2013**  
from: **5:00 p.m. to 7:30 p.m.**

There are 30 days for the submission of comments by the public in relation to the draft Application Information Requirements. The comment period will begin on November 13, 2013 and end on December 13, 2013. All comments received during this comment period in relation to the Application Information Requirements will be considered.

The intention of seeking public comments is to ensure that all potential effects – environmental, economic, social, heritage and health – that might result from the proposed Project are identified for consideration as part of the assessment process. At this stage of the process, the primary intent is to receive feedback about the studies or information required for a comprehensive environmental assessment.

After taking public comments into account, EAO will finalize the Application Information Requirements and issue them to the Proponent.

EAO accepts public comments through the following ways:

- **By Online Form at**  
<http://www.eao.gov.bc.ca>
- **By Mail:**  
Scott Barillaro  
Project Assessment Manager  
Environmental Assessment Office  
PO Box 9426 Stn Prov Govt  
Victoria BC V8W 9V1
- **By Fax:**  
Fax: 250-387-2208

An electronic copy of the Application Information Requirements and information regarding the environmental assessment process are available at [www.eao.gov.bc.ca](http://www.eao.gov.bc.ca). Copies of the Application Information Requirements are also available for viewing at these locations:

- Hazelton Public Library (4255 Government St., Hazelton)
- Gitlaxt'aamiks Village Government (222 – 5th Avenue Main St., Gitlaxt'aamiks/New Aiyansh)
- Dease Lake Learning Centre/Northern Lights College Library (10 Commercial Dr., Dease Lake)
- Stewart Public Library (824 A Main St., Stewart)
- Smithers Public Library (3817 Alfred Ave., Smithers)
- Terrace Public Library (4610 Park Ave., Terrace)

If you are unable to participate at this time, there will be an additional comment period during the Application review stage when you will also be able to provide comments to EAO on the proposed Project.

**NOTE:** All submissions received by EAO during the comment period in relation to the proposed Project are considered public and will be posted to the EAO website.