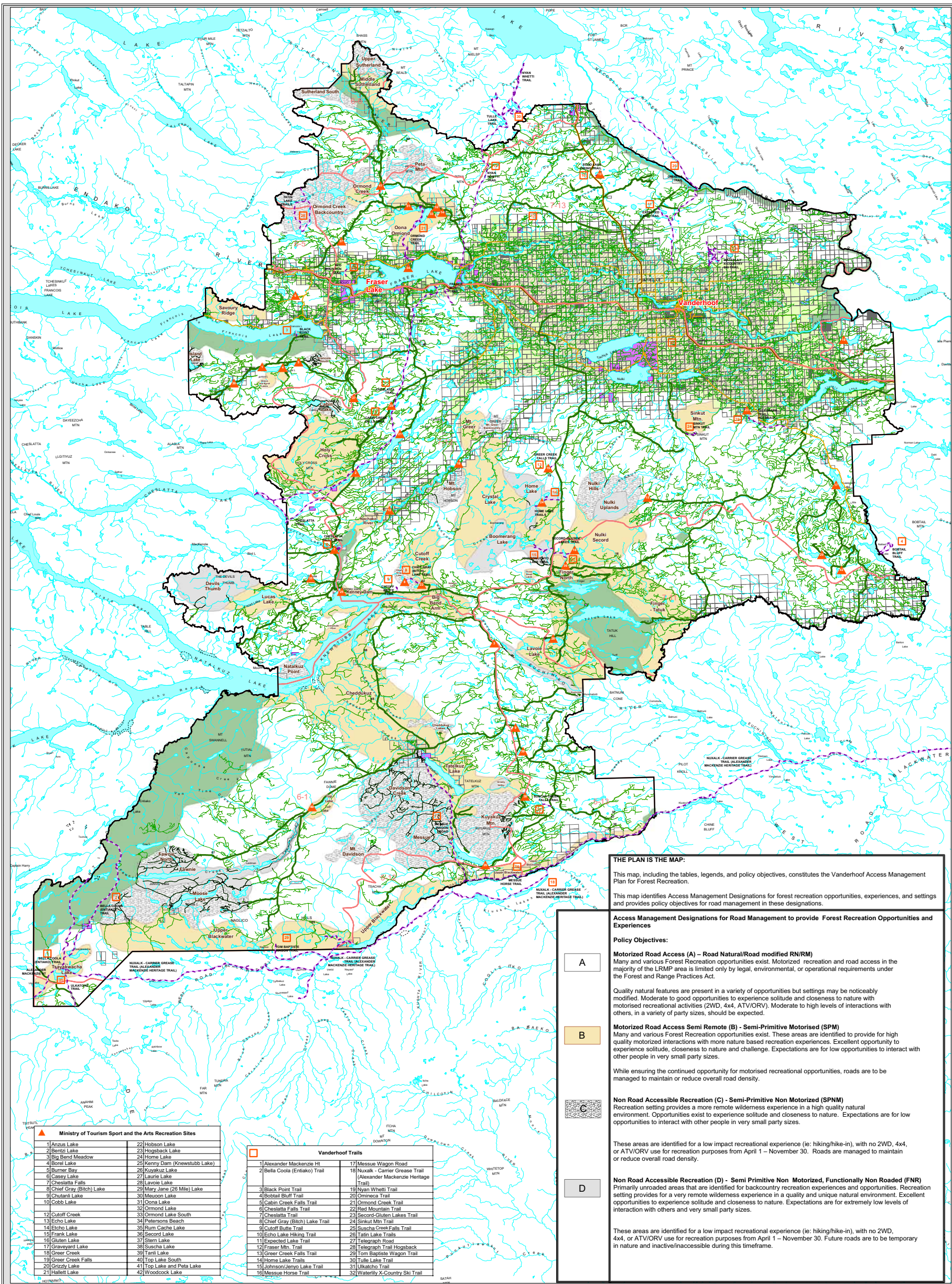


---

---

## Appendix 12.2.1D Vanderhoof Access Management Plan





**THE PLAN IS THE MAP:**

This map, including the tables, legends, and policy objectives, constitutes the Vanderhoof Access Management Plan for Forest Recreation.

This map identifies Access Management Designations for forest recreation opportunities, experiences, and settings and provides policy objectives for road management in these designations.

**Access Management Designations for Road Management to provide Forest Recreation Opportunities and Experiences**

**Policy Objectives:**

**A**

**Motorized Road Access (A) – Road Natural/Road modified RN/RM**

Many and various Forest Recreation opportunities exist. Motorized recreation and road access in the majority of the LRM area is limited only by legal, environmental, or operational requirements under the Forest and Range Practices Act.

Quality natural features are present in a variety of opportunities but settings may be noticeably modified. Moderate to good opportunities to experience solitude and closeness to nature with motorised recreational activities (2WD, 4x4, ATV/ORV). Moderate to high levels of interactions with others, in a variety of party sizes, should be expected.

**B**

**Motorized Road Access Semi Remote (B) - Semi-Primitive Motorised (SPM)**

Many and various Forest Recreation opportunities exist. These areas are identified to provide for high quality motorized interactions with more nature based recreation experiences. Excellent opportunity to experience solitude, closeness to nature and challenge. Expectations are for low opportunities to interact with other people in very small party sizes.

While ensuring the continued opportunity for motorised recreational opportunities, roads are to be managed to maintain or reduce overall road density.

**C**

**Non Road Accessible Recreation (C) - Semi-Primitive Non Motorized (SPNM)**

Recreation setting provides a more remote wilderness experience in a high quality natural environment. Opportunities exist to experience solitude and closeness to nature. Expectations are for low opportunities to interact with other people in very small party sizes.

**D**

**Non Road Accessible Recreation (D) - Semi Primitive Non Motorized, Functionally Non Routed (FNR)**

Primarily unroaded areas that are identified for backcountry recreation experiences and opportunities. Recreation setting provides for a very remote wilderness experience in a quality and unique natural environment. Excellent opportunities to experience solitude and closeness to nature. Expectations are for extremely low levels of interaction with others and very small party sizes.

These areas are identified for a low impact recreational experience (ie: hiking/hike-in), with no 2WD, 4x4, or ATV/ORV use for recreation purposes from April 1 – November 30. Roads are managed to maintain or reduce overall road density.

These areas are identified for a low impact recreational experience (ie: hiking/hike-in), with no 2WD, 4x4, or ATV/ORV use for recreation purposes from April 1 – November 30. Future roads are to be temporary in nature and inactive/inaccessible during this timeframe.

Ministry of Tourism Sport and the Arts Recreation Sites	
1 Anzus Lake	22 Hobson Lake
2 Bentz Lake	23 Hogsback Lake
3 Big Bend Meadow	24 Home Lake
4 Bond Lake	25 Kenny Dam (Knewstubb Lake)
5 Burner Bay	26 Kuyakuz Lake
6 Casey Lake	27 Laurie Lake
7 Cheslatta Falls	28 Lavoie Lake
8 Chief Gray (Blch) Lake	29 Mary Jane (26 Mile) Lake
9 Chulanji Lake	30 Meuson Lake
10 Cobb Lake	31 Oona Lake
11 Cutoff Creek	32 Ormond Lake
12 Echo Lake	33 Ormond Lake South
13 Elcho Lake	34 Petersons Beach
14 Elcho Lake	35 Rum Cache Lake
15 Frank Lake	36 Second Lake
16 Gluten Lake	37 Stern Lake
17 Graveyard Lake	38 Suscha Lake
18 Greer Creek	39 Tani Lake
19 Greer Creek Falls	40 Top Lake South
20 Grizzly Lake	41 Top Lake and Peta Lake
21 Hallett Lake	42 Woodcock Lake

Vanderhoof Trails	
1 Alexander Mackenzie Ht	17 Messieu Wagon Road
2 Bella Coola (Entlako) Trail	18 Nuxalk - Carrier Grasse Trail (Alexander Mackenzie Heritage Trail)
3 Black Point Trail	19 Nwan Whetti Trail
4 Bobtail Bluff Trail	20 Omneca Trail
5 Cabin Creek Falls Trail	21 Ormond Creek Trail
6 Cheslatta Falls Trail	22 Red Mountain Trail
7 Cheslatta Trail	23 Second-Cuban Lakes Trail
8 Chief Gray (Blch) Lake Trail	24 Siskit Mtn Trail
9 Cutoff Butte Trail	25 Suscha Creek Falls Trail
10 Echo Lake Hiking Trail	26 Tain Lake Trails
11 Expedited Lake Trail	27 Telegraph Road
12 Fraser Mtn. Trail	28 Telegraph Trail Hogsback
13 Greer Creek Falls Trail	29 Tom Baptista Wagon Trail
14 Home Lake Trails	30 Tulke Lake Trail
15 Johnson/Jenyo Lake Trail	31 Ukkicho Trail
16 Messieu Horse Trail	32 Waterlily X-Country Ski Trail



# Vanderhoof Access Management Plan for Forest Recreation 2008 - 2013

**Integrated Land Management Bureau**  
 For more information visit the Vanderhoof LRM web site:  
<http://limbwww.gov.bc.ca/lup/lmp/northern/vanderhof/index.html>

Filepath: W:\m\l\arcproj\g\l\m\planning\gg\_07\_0009\_Vanderhoof\work\mads\lva\_lmp\_access\_mgmt\_031208.mxd  
 Projection/Datum: BC Albers/NAD83  
 Date Created: May 11, 2008  
 Latest Revision: March 12, 2008  
 Created by: Prince George Service Center, kb,ab

Scale: 1:200,000

**Data Sources (as of October 30, 2007)**

Access Management Designations	W:\m\l\arcproj\g\l\m\planning\gg_07_0009_Vanderhoof\source\covers\lva_m_dva
Crown Tenures in BC from Tantals	P:\copr\arcw\set\enureitcu_bc
Current Access Control Points	Q:\prg\z\ann\ros\amvmt
Indian Reserves	WHSE_ADMIN_BOUNDARIES.CLAB_INDIAN_RESERVES
Permanent Road Network	W:\m\l\arcproj\g\l\m\planning\gg_07_0009_Vanderhoof\source\covers\lva_m_dva
Protected Areas of BC	P:\copr\arcw\set\enureitcu_bc
Recreation Sites	W:\m\l\arcproj\g\l\m\planning\gg_07_0009_Vanderhoof\source\covers\lva_m_dva
Recreation Trails	W:\m\l\arcproj\g\l\m\planning\gg_07_0009_Vanderhoof\source\covers\lva_m_dva
Survey Parcel Boundaries (Public View)	WHSE_CADASTRE.CBM_CADASTRAL_FABRIC_PUB_SVV
Vanderhoof Consolidated Roads	W:\m\l\arcproj\g\l\m\planning\gg_07_0009_Vanderhoof\source\covers\van_roads
Vanderhoof Forest District boundary	P:\prg\arc\bdry\fordts_dva
Vanderhoof LRM Resource Management Zones	P:\copr\arcw\set\enureitcu_mv
Wildlife Management Units	WHSE_WILDLIFE_MANAGEMENT.WAA_WILDLIFE_MGMT_UNITS_SVV

**Legend**

**Base**

- Vanderhoof Forest District
- Survey Parcel Boundaries
- Wildlife Management Units
- Public Highway
- Public Secondary Road
- Permanent Road Network
- Forest Service Road
- Permitted Road
- Other Road
- Non-motorized Access
- District Municipality
- Village
- Access Control Points from 1998-2005 Access Plan

**Land Use**

- Private
- Settlement Area
- Crown Lease
- Crown Agricultural Lease
- Indian Reserve
- Parks and Protected Areas

**Recreation Features**

- Recreation Site
- Identified Trails
- Recreation Trail Symbol

This map is only intended for use in strategic planning processes. Some recreation site features were amended to provide current best estimate of feature locations. Some trail features were added from non-corporate sources to provide current best estimate of known trail locations. As a result, some feature locations may disagree with corporate sources (LRM) available as of October 30, 2007.