

Appendix 3-B

Project Brochures

HARPER CREEK PROJECT

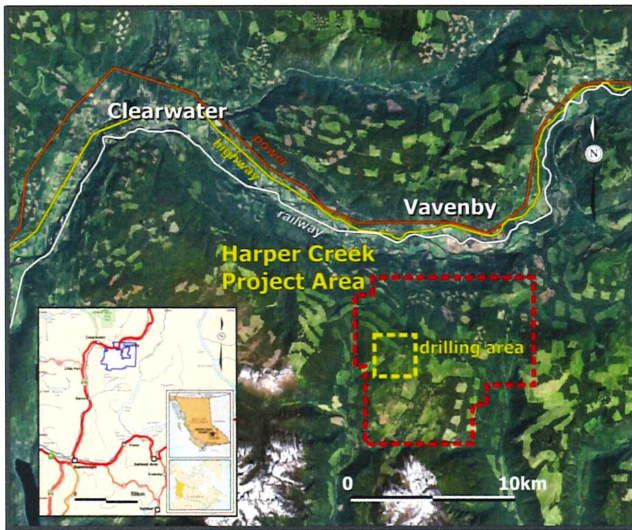
**Application for an Environmental Assessment Certificate /
Environmental Impact Statement**



YELLOWHEAD
MINING INC.

Harper Creek Project EAO Open House

June 1, 2011 - Clearwater B.C.



MANAGEMENT OF YELLOWHEAD MINING INC.

Ian Smith, Mining Engineer: CEO

- ❖ 40+ years of experience in corporate, operations, and project management and consulting within the international base, precious metals and coal industries.
- ❖ Involvement with other large scale copper projects at a senior management level including Bougainville Copper, Mexicana de Cobre, Fluor in China, Zambian copper belt, bcMetals (Red Chris project).

Ronald L. Handford, P.Eng., B.A.Sc., MBA: Executive Vice President, Corporate Development

- ❖ 35+ years of international experience in development and finance relating to resources and technology.
- ❖ Prior to 1996 was an investment officer with International Finance Corporation and resource industry banker with Barclays Bank.

Robert L. J. Harper, BA, MBA: Chief Financial Officer

- ❖ 30+ years experience in corporate finance, financial advisory and the resource banking industry.
- ❖ Has been an advisor to or officer of both private and public companies.

Alastair Tiver, P.Eng.: Vice President, Operations

- ❖ 24+ years international experience in operating roles ranging from exploration stage to large scale operating mines in a variety of commodities – most recently Chief Engineer of Copper Mountain Mining Corp.

Charlene Higgins, MSc, PhD: Vice President Environment and Community & First Nations Relations

- ❖ 14+ years as a senior negotiator and policy advisor working with Aboriginal communities and organizations.
- ❖ Expertise in the areas of sustainable use and management of natural resources, multi-stakeholder engagement.

HARPER CREEK PROJECT – FIRST NATIONS

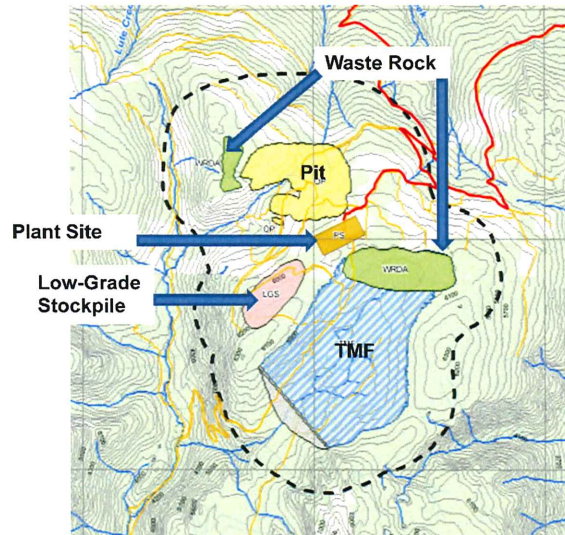
The Project lies within the asserted traditional territories of the Simpcw First Nation, and the Adams Lake Indian Band; YMI has a Negotiation Agreement with Simpcw

Information sharing regarding the EA Process and Baseline Studies

- Simpcw First Nation
- Adams Lake Indian Band
- Neskonlith Indian Band
- Little Shuswap Indian Band

HARPER CREEK PROJECT – OVERVIEW FROM PRELIMINARY ECONOMIC ASSESSMENT (PEA)

- 22 year mine life
- Milling rate 70,000 tonnes/day
- Low Stripping Ratio (0.9:1) Life-of-mine (LOM)
- LOM Copper Production - 2.8 billion lbs
- LOM Gold – 265,000 oz
- LOM Silver - 4.8 million oz
- Adjacent Rail Loadout and Power at Vavenby
- Local community workforce located nearby in Vavenby, Clearwater, Barriere and Blue River
- Capital cost \$759 million



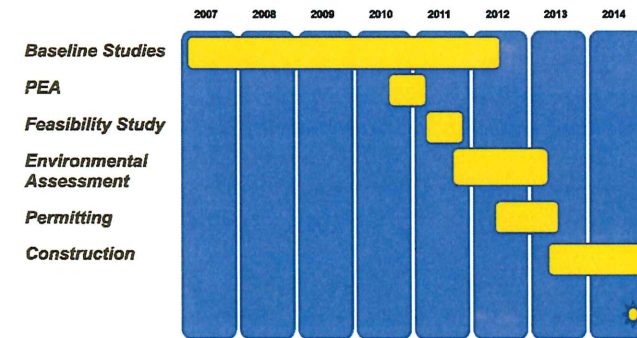
HARPER CREEK PROJECT – EMPLOYMENT

- up to 500 construction jobs at peak
- ~ 400 Direct operations jobs – mine, mill, admin
- ~ 1,200 indirect jobs in B.C. (3x multiplier)

SOCIO-ECONOMIC FACTORS

- Pre-development expenditures \$25 million – locally sourced
- Operating costs over mine life (22 years) from PEA ~ \$4 billion in direct mine operating costs, a significant portion of which will be sourced locally
- Significant mining taxes and income taxes, variable depending on metal prices – to be determined in feasibility study

HARPER CREEK PROJECT TIMELINE



YELLOWHEAD MINING INC. Contact

Charlene Higgins, MSc, PhD: Vice President Environment and Community & First Nations Relations

Direct: 250-320-3387

E-mail: chiggins@yellowheadmining.com



YELLOWHEAD
MINING INC.

WWW.YELLOWHEADMINING.COM



MINING PROVIDES EXCELLENT OPPORTUNITIES FOR MEN AND WOMEN.



Hiring forecasts indicate that the number of vacancies in Mining Operations positions will more than double in the next five years.

Women: A Unmined Resource Report: November 14, 2011
<http://goo.gl/tlBjBO>

SCHOOLS IN BRITISH COLUMBIA WITH MINING COURSES AND PROGRAMS

BC Institute of Technology (BCIT)
www.bcit.ca

Thompson Rivers University (TRU)
www.tru.ca

College of New Caledonia (CNC)
www.cnc.bc.ca

Northwest Community College (NWCC)
www.nwcc.bc.ca

REFERENCES

- www.mining.bc.ca
- www.infomine.com/careers
- www.acareerinmining.ca
- www.amebc.ca
- www.gravelbc.ca
- www.bcanta.ca



**YELLOWHEAD
MINING INC.**

www.yellowheadmining.com

**For employment related enquiries contact:
info@yellowheadmining.com**



**YELLOWHEAD
MINING INC.**

EMPLOYMENT AT THE HARPER CREEK PROJECT IN BRITISH COLUMBIA



JOBS IN MINING

Canada's Mineral Exploration & Mining Sector is the largest private sector employer of Aboriginal Peoples.

BC is home to more than 20 major operating coal, metal and aggregate mines and smelters. The mining industry benefits communities in BC with over 21,000 direct jobs and twice as many indirect employment and contract opportunities (MABC 2012).



Mining is one of the fastest growing and highest paying industries in BC. The mining industry is projected to be the economic engine of the provincial economy. Given the current development of the mining sector, the industry will require approximately 5,900 additional workers by 2016, the majority expected in Mining Operations Positions.

<http://goo.gl/Lbqqol>

JOB OPPORTUNITIES

600

SHORT TERM JOBS DURING CONSTRUCTION

450

LONGER TERM JOBS DURING OPERATIONS

It is our plan to start construction in 2016, and be in operations in 2018. Jobs in the mining sector can be attained through a combination of training and education programs.

SHORT TERM

CONSTRUCTION

Entry Level

Salary Range: \$40,000 - \$60,000

Skilled Tradesman: Pipefitters, Millwrights, Electricians, Mechanics:

Salary Range: \$60,000 - \$70,000

LONGER TERM

Longer term jobs & opportunities will be associated with Operations

SAFETY AND SITE SERVICES

Salary Range: \$45,000 - \$95,000

First Aid, Security, Janitorial, Labourers, Electricians, Carpenters, Plumber/Gas Fitters

ADMINISTRATION

Salary Range: \$57,000 - \$100,000

Accountants, HR Manager, Safety Supervisor, Environmental Technicians, Environmental Coordinator

MINE OPERATIONS

Salary Range: \$57,000 - \$100,000

Milling: Crusher Operator, Grinding Operator, Flotation Operators, Day Crew, Loader Operator, Metallurgist

Maintenance Staff: Millwrights, Welders, Pipefitters, Apprentices, Electricians

ENGINEERING, GEOLOGY AND ENVIRONMENT

Salary Range: \$70,000 - \$100,000



HARPER CREEK

The Harper Creek project is a proposed open pit copper-gold-silver mine located in south-central British Columbia approximately 150 km northeast by road from Kamloops. The Project is located about 10 km south of Vavenby which is the closest population centre.

It is our intention to hire as many local people as possible. We believe that our success is linked to the success and well-being of the local communities and First Nations.



Example of open pit mine

WOMEN IN MINING

BC ABORIGINAL MINE TRAINING ASSOC.

INTRO TO TRADES AND WOMEN IN TRADES

Participants in this program may also qualify for Foundations training, specific to one of the Trades that are in-demand in the mining industry. BC AMTA and its partners sometimes offer a "women only" version of this program which encourages women to get into the trades through a comfortable learning setting.

<http://goo.gl/8cBULI>

COLLEGE OF THE ROCKIES

A three week training program is being offered by The College of the Rockies, Fernie Campus, in partnership with Teck. The goal of the program is to introduce women to the types of careers available within the surface coal mining industry.

<http://goo.gl/fGJW6o>

MABC - WOMEN IN MINING

<http://goo.gl/yxZMiy>

WIMBC - WOMEN IN MINING BC

<http://goo.gl/rhsGGS>

100 GLOBAL INSPIRATIONAL WOMEN IN MINING

<http://goo.gl/jBTrJh>

CAREERS IN MINING: WOMEN - DIVERSITY

<http://goo.gl/rGBu00>



Yellowhead Mining is a Canadian company with a 100% interest in the Harper Creek copper-gold-silver development project in south-central British Columbia, approximately 150 kilometres by highway north of Kamloops. Harper Creek offers exceptional potential as one of the largest copper development projects in Canada.



YELLOWHEAD MINING INC.

www.yellowheadmining.com

For employment related enquiries contact:
info@yellowheadmining.com



YELLOWHEAD MINING INC.

LINKS TO MINING PROGRAMS IN BC



BCIT

MINING & MINERAL EXPLORATION TECHNOLOGY: FULL-TIME DIPLOMA

The Mining and Mineral Exploration Technology program focuses on geology, mining methods, exploration technology, surveying, and computer applications for mining operations and mineral explorations. Students learn hands-on science and engineering skills, and complete an industry-standard report during the second year of the full-time program.

If you are interested in a varied work environment, in the office, lab or field, and like solving scientific problems, this program will appeal to you. Take the Mining and Mineral Exploration Technology program, the only program of its kind in Western Canada.

<http://goo.gl/Cq9idq>

ABORIGINAL MINERALS TRAINING PROGRAM

Increase the opportunities for Aboriginal people to obtain training in geology, mineral exploration and mining in and around their local communities.

<http://goo.gl/Ggsweg>

BC ABORIGINAL MINE TRAINING ASSOC.

Focus on preparation and skills upgrading, BC AMTA is building capacity with, and for First Nations communities in British Columbia. Programs are offered in the Central Interior, Kootenays, Cariboo-Chilcotin and in northwestern BC.

<http://goo.gl/jqPz3D>

<http://goo.gl/DhtmgD>



THOMPSON RIVER UNIVERSITY

HEAVY EQUIPMENT OPERATOR, CIVIL & MINING

The mining and construction industry in the BC interior is currently experiencing a shortage of trained equipment operators. This program is aimed at providing those who are under-skilled or underemployed, and the opportunity to develop the skills necessary to obtain a higher paying employment in the construction or mining industries.

<http://goo.gl/CMf64W>

<http://goo.gl/cwXaT7>



COLLEGE OF NEW CALEDONIA

CNC'S MINING INDUSTRY CERTIFICATE

The program includes classroom instruction, WorkSafe BC Certification, Ministry of Energy, Mines, and Petroleum Resources (MEMPR) education based on the Health, Safety and Reclamation Code for Mines in British Columbia, skill certification, safety training, applied human relation skills, employability skills, simulator training, and field orientation and experiences.

<http://goo.gl/l8UoRW>

NORTHWEST COMMUNITY COLLEGE

Since its inception in 2004, Northwest Community College's School of Exploration & Mining (SEM) has taken a leadership role in providing training for the minerals industry workforce in Northern BC communities.

<http://goo.gl/0oRdFu>

<http://goo.gl/QRkgR6>

COLLEGE OF THE ROCKIES

MINING APPRENTICESHIP PROGRAM

This exceptional apprenticeship training program is delivered using a new innovative training model. MAP is designed to train participants for positions/careers as Heavy Duty Equipment Technician and/or Electricians. Apprenticeship Work Experience (AWE) will take place at the worksite of the MAP partners under actual operating conditions.

<http://goo.gl/i7yFNU>

EDUMINE

CERTIFICATE IN MINING STUDIES

A continuing education program of accredited short courses, webcasts and online courses for lifelong learning in mining.

<http://goo.gl/hZ0Rsr>

THE BC STONE, SAND & GRAVEL ASSOCIATION

Has developed a number of elementary-level lesson plans aimed at giving young people a better understanding of the importance and of the widespread use of aggregate in our everyday lives. The lessons are interactive and deal with a variety of topics including mathematics, measurements, and vocabulary.

<http://goo.gl/WB93sq>

OTHER LINKS TO VISIT

MABC - CAREER OPTIONS

<http://goo.gl/aP40AX>

GET THE RIGHT TRAINING

<http://goo.gl/sIHGLt>

CAREER OPPORTUNITIES

<http://goo.gl/aHeoG>

BC MINERAL EXPLORATION & MINING STRATEGY

<http://goo.gl/Vd0dzd>