

# GENERATION PGM

January 14, 2022

**Via E-Mail**

Joint Review Panel  
Impact Assessment Agency of Canada  
160 Elgin Street, 22nd Floor  
Ottawa, ON K1A 0H3

Attention: Debra Sikora  
Panel Chair, Marathon Palladium Project

Dear Ms. Sikora:

**Re: Generation PGM ("GenPGM") Marathon Palladium Project ("Project")  
Environmental Impact Statement Addendum Appendix D4 (Hydrogeology Updated  
Effects Assessment Report) Figure Correction**

GenPGM has attached two minor corrections to maps within Appendix D4 (Hydrogeology Updated Effects Assessment Report) of its Environmental Impact Statement Addendum ("**EIS Addendum**") (CIAR #[727](#)).

The simulated steady-state water table elevation contours for the end of operations (year 12 of mine life) and in closure were presented on Figure 11 (PDF 67) and Figure 13 (PDF 69), respectively, within Appendix D4 (Hydrogeology Updated Effects Assessment Report) of the EIS Addendum (CIAR #[727](#)). Two groundwater flow directional arrows on Figures 11 and 13, located south of the Process Solids Management Facility (PSMF), were inadvertently presented in the opposite direction of groundwater flow. The groundwater flow direction arrows in the vicinity of the PSMF have been updated and are presented on the attached revised Figure 11 and 13.

The groundwater flow direction arrows are not an output from the groundwater flow model and are placed on the figure to assist the reader in interpretation of the groundwater elevation contours. The prediction of groundwater discharge and particle tracks of seepage from mine facilities (such as the PSMF and Mine Rock Storage Area) are a direct output of the groundwater flow model which are based on the predicted groundwater elevation contours, which remain unchanged from the EIS Addendum. Therefore, the direction of the groundwater flow arrows do not affect the assessment of effects of the Project on groundwater as presented in the EIS Addendum.

Should you have any questions please contact the undersigned.

Yours truly,

GENERATION PGM INC.

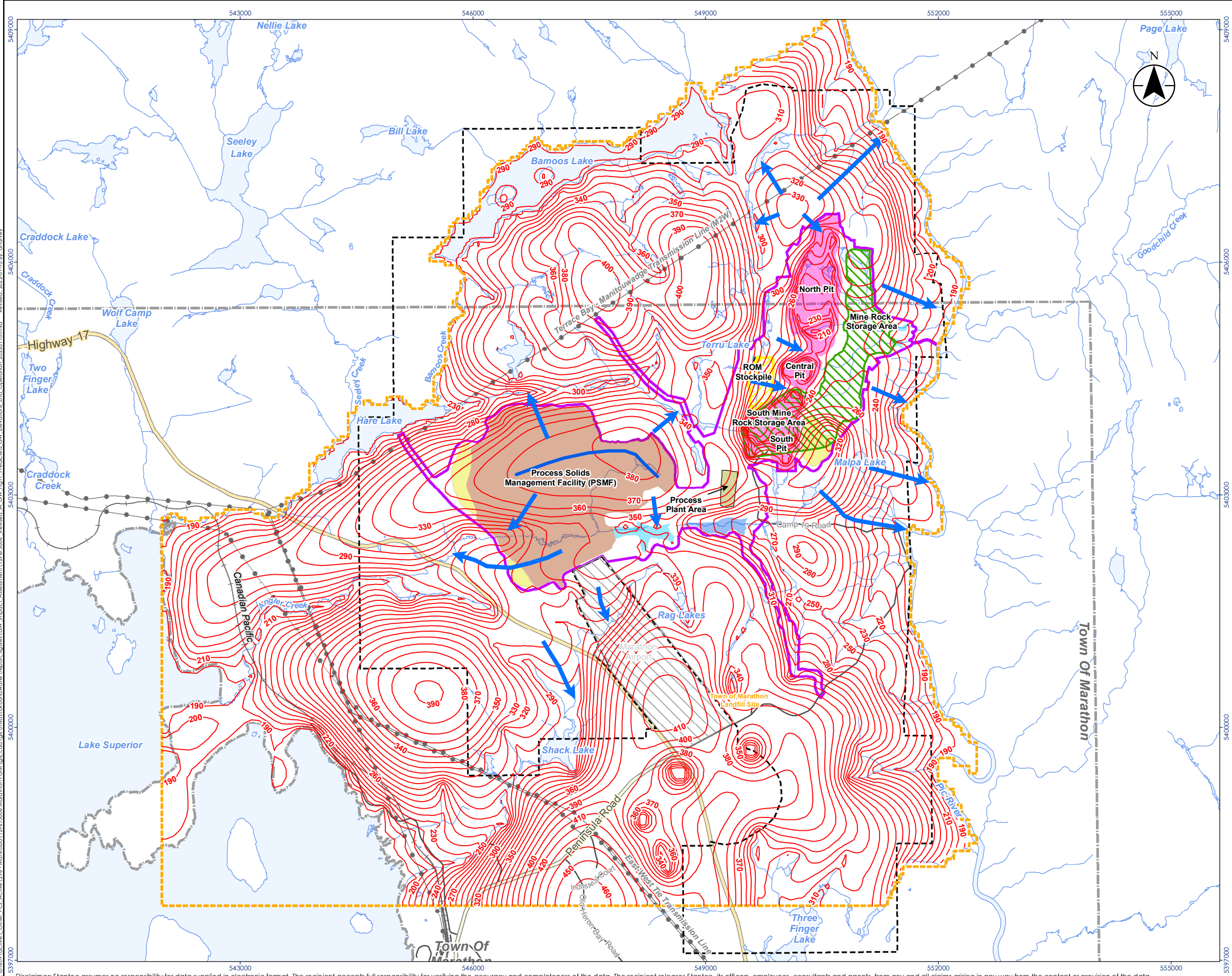
<Original signed by>

Jeremy Dart  
Environmental Manager

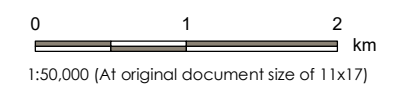
Encl.

Generation PGM Inc.  
First Canadian Place, 100 King Street West, Suite 7010  
P.O. Box 70, Toronto, ON M5X 1B1

TSX: **GENM**  
**www.genmining.com**  
Tel: **416-640-0280**



- Legend**
- Regional / Local Study Area (Groundwater)
  - Project Boundary (MLAS, MENDM Changed 2017)
  - Site Study Area
  - Modelled Groundwater Contour (m AMSL)
  - Groundwater Flow Divide
  - Groundwater Flow Direction
  - Highway
  - Major Road
  - Minor Road
  - Hydro Line
  - + Railway
  - Watercourse
  - Airport
  - Municipal Boundary, Lower Tier
  - Waterbody
- Proposed Mine Features**
- Mine Rock Storage Area (MRSA)
  - Process Plant
  - ROM Stockpile
  - Stormwater Management Pond
  - Open Pit
  - Overburden Stockpile
  - Process Solids Management Facility (PSMF)
  - Water Management Pond



- Notes**
1. Coordinate System: NAD 1983 UTM Zone 16N
  2. Base features produced under license with the Ontario Ministry of Natural Resources and Forestry © Queen's Printer for Ontario, 2018.
  3. Groundwater elevations are in m asl.
  4. The proposed mine features depicted on this drawing are intended to represent a generalized and conceptual overview of the major mine components at the end of operations stage of mine life.



Project Location: Marathon  
 Project Location: 129673006 REVA  
 Prepared by: DH on 2022-01-10

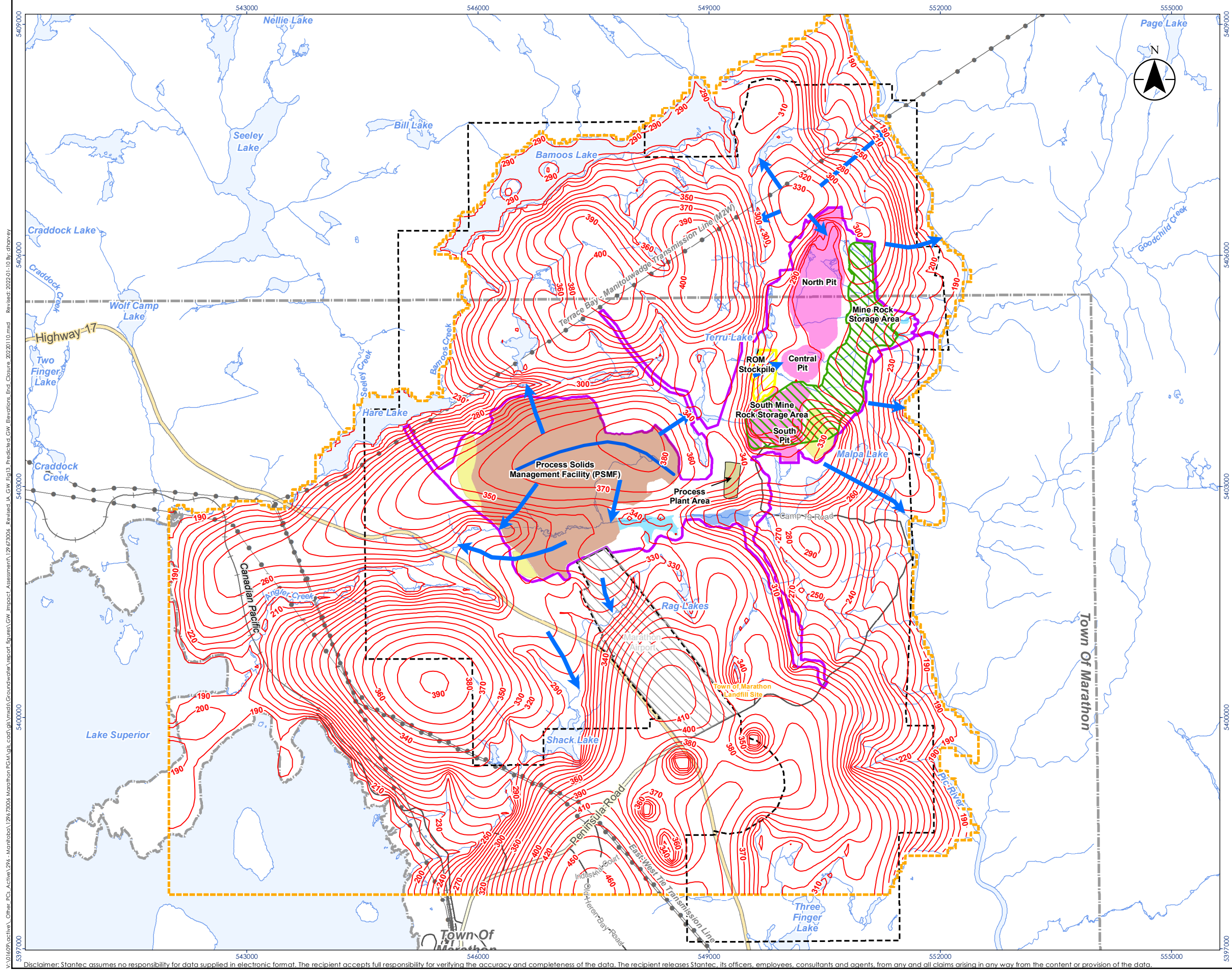
Client/Project: GENERATION PGM INC. MARATHON PALLADIUM PROJECT

Figure No. **11**

Title: **Predicted Water Table Elevation Contours at End of Operation - Revised**

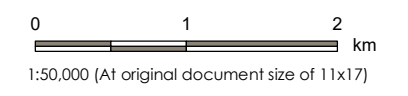
V:\01609\active\Other\_PCs\_Active\194 - Marathon\129673006 Marathon PGM\GIS\cad\_gis\mxd\Groundwater\report\_figures\GW\_Impact\_Assessment\129673006\_RevA\_Fig11\_Predicted\_GW\_Elevations\_End\_of\_Operation\_20220110.mxd Revised: 2022-01-10 By: dhovrey

Disclaimer: Stantec assumes no responsibility for data supplied in electronic format. The recipient accepts full responsibility for verifying the accuracy and completeness of the data. The recipient releases Stantec, its officers, employees, consultants and agents, from any and all claims arising in any way from the content or provision of the data.



Legend

- Regional / Local Study Area (Groundwater)
  - Project Boundary (MLAS, MENDM Changed 2017)
  - Site Study Area Boundary
  - Modelled Groundwater Contour (m AMSL)
  - Groundwater Flow Divide
  - ➔ Groundwater Flow Direction
  - Highway
  - Major Road
  - Minor Road
  - Hydro Line
  - Railway
  - Watercourse
  - Airport
  - Municipal Boundary, Lower Tier
  - Waterbody
- Mine Rock Storage Area (MRSA)
  - Process Plant Area
  - ROM Stockpile
  - Stormwater Management Pond
  - Open Pit
  - Overburden Stockpile
  - Process Solids Management Facility (PSMF)
  - Water Management Pond



- Notes**
1. Coordinate System: NAD 1983 UTM Zone 16N
  2. Base features produced under license with the Ontario Ministry of Natural Resources and Forestry © Queen's Printer for Ontario, 2018.
  3. Groundwater elevations are in m asl.
  4. The proposed mine features depicted on this drawing are intended to represent a generalized and conceptual overview of the major mine components at the end of operations stage of mine life.



Project Location: Marathon  
 Prepared by: DH on 2022-01-10  
 129673006 REVA

Client/Project: GENERATION PGM INC. MARATHON PALLADIUM PROJECT

Figure No. **13**  
 Title: **Predicted Water Table Elevation Contours at Post Closure (Pit Lakes) - Revised**

V:\01609\active\Other\_PCs\_Active\194 - Marathon\129673006 Marathon PGM\GIS\G00\GIS\mxd\Groundwater\Report\_Figures\GW\_Impact\_Assessment\129673006\_Revise IA\_GW\_Fig13\_Predicted GW Elevations\_End Closure\_20220110.mxd Revised: 2022-01-10 By: dhaney