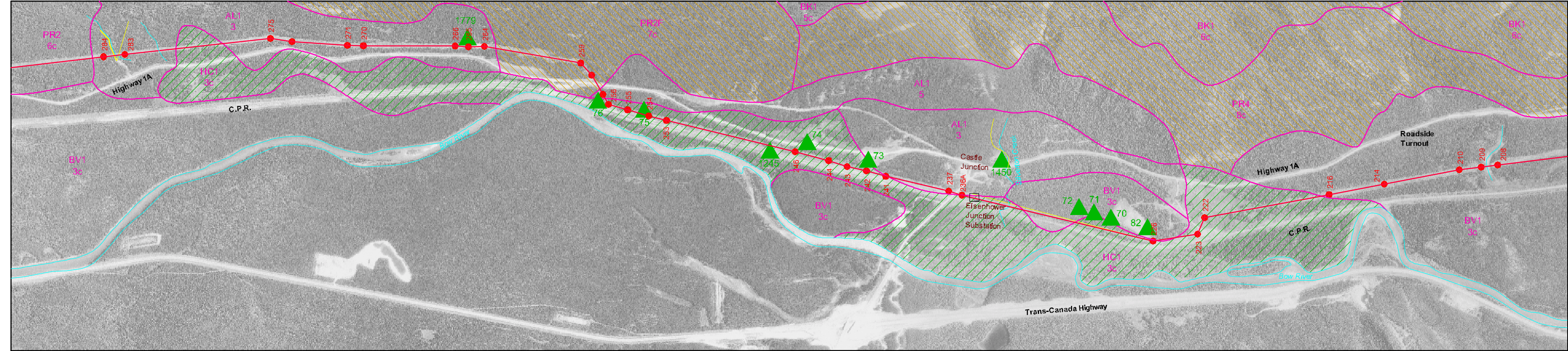


Stream Crossings and Listed ^A /Spawning ^B Fish	Unnamed creek to Bow River 284-283	Unnamed creek to Bow River 280-279			Silverton Creek 236A-234 Cutthroat trout ^ Bull trout ^		Unnamed creek to Bow River 209-208				
Species with Special Conservation Status	(PR2) Western tanager, Lynx, Grizzly bear	(AL1) Cougar, Lynx, Wolverine, Grizzly bear	(HC1) Wolverine, Grizzly bear	(AL1) Cougar, Lynx, Wolverine, Grizzly bear	(PR2F) Western Tanager, Lynx, Grizzly bear	(AL1) Cougar, Lynx, Wolverine, Grizzly bear	(HC1) Wolverine, Grizzly bear	(AL1) Cougar, Lynx, Wolverine, Grizzly bear	(BV1) Lynx, Grizzly bear	(HC1) Wolverine, Grizzly bear	(BV1) Lynx, Grizzly bear
Time Restrictions	Potential spawning: no stream crossing from Sept 1 to April 15 and from May 1 to Aug 15	Potential spawning: no stream crossing from Sept 1 to April 15 and from May 1 to Aug 15		Important Grizzly bear habitat (spring and fall feeding):	Potential spawning in Silverton Creek: winter crossing when dry, no stream crossing from May 1 to Aug 15		Potential for wet terrain: frozen ground access preferred				Potential spawning: no stream crossing from Sept 1 to April 15 and from May 1 to Aug 15
Vegetation Restrictions											
Wildlife	23c	26c	259	251	233	226	216	233	226	233	203
Archaeology			Site 1779: Historic stone survey cairn with adjacent blazed tree with inscription - Do not disturb.	Sites 75, 76, 1245: Aboriginal sites - Notify park archaeological staff prior to ground disturbing activities.	Site 73: Historic feature - Notify park archaeological staff prior to ground disturbing activities.				Sites 82: Aboriginal sites - Notify park archaeological staff prior to ground disturbing activities.		

- Legend**
- Transmission Line Right-of-Way
 - Existing Distribution Line
 - Hiking/Ski Trail
 - Waterbody
 - ~ Ecosite Transition Zones
 - NY3 8 Ecosite Classification
 - Potential for Wet Terrain
 - Potential for Special Vegetation Resources
 - Potential High Risk Erosion Areas
 - Existing Substation Site
 - Pole Location
 - |— Gate
 - 283 Structure Number
 - ▲ Archaeological Site



Ecological Constraint Maps for AltaLink MCSR in Banff National Park

Scale = 1:10,000 (approx)
Scale (m)
November 2002
(11-16-1994
Airphoto)

