

APPENDIX B

Photos of Stream Crossings

APPENDIX B Photos of Stream Crossings



Photo 1. Dry streambed from east end of Johnson Lake (M54L Poles 253-252), November 2002. Creek is also dry at pole crossings 249-248 and 259-258, allowing year-round access.



Photo 2. Berm at east end of Johnson Lake, November, 2002. Berm prevents flows to the east and resulting in dry streambeds at M54L Poles 249-248, 253-252 and 259-258.



Photo 3. Unnamed creek from Johnson Lake (M54L Poles 265-264), November 2002. The low and stable streambanks are suitable for crossing throughout the year.



Photo 4. Unnamed creek from Johnson Lake (M54L Poles 265-264), December 2002.



Photo 5. Unnamed creek from Johnson Lake just downstream of the crossing, December 2002. A series of steep falls prevents upstream fish migration, and limits fish habitat in this creek.



Photo 6. Ranger Creek (M551L Poles 134-133), December 2002. Streambed has been excavated and piles of spoil placed on both sides of the creek. The creek is frozen to the substrate at this crossing site.



Photo 7. Ranger Creek , (M551L Poles 134-133), December 2002.

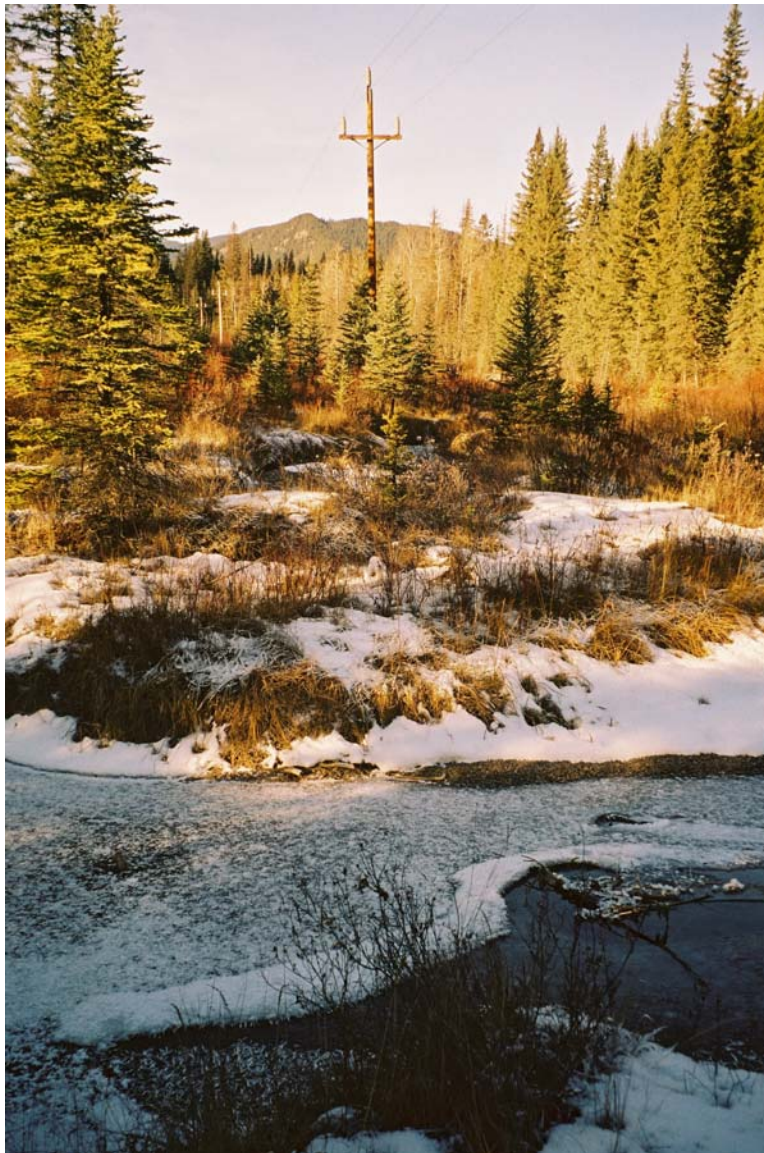


Photo 8. Ranger Creek (M155L Poles 132-131), December 2002. Some sections of the creek are impassable, while others, like the above, may be crossed during the open timing windows.



Photo 9. Borrow Pit Springs (M551L Poles 190-189), December 2002. Creek is frozen to substrate at this crossing, allowing winter access.



Photo 10. Borrow Pit Springs (M551L Poles 195-194), December 2002. The creek is partially frozen over at this crossing.



Photo 11. Silverton Creek (M551L Poles 337 – 236A), November 2002. The streambed is completely dry, allowing winter access.



Photo 12. Unnamed Creek to Bow River (M551L Poles 284-283), November 2002. Creek flows year round, however, alternate access is available and stream crossing unnecessary.



Photo 13. Unnamed Creek to Bow River (M551L Poles 330-329), November 2002. The creek is frozen to the substrate, allowing winter access. Access will depend on ingress and egress routes across the streambanks, which appear to be mobile.



Photo 14. Corral Creek (M551L Poles 442-441), December 2002. The creek is dry and frozen to the substrate, allowing winter access.



Photo 15. Unnamed Creek (M551L Poles 447-446), December, 2002. Streambed flows continuously at this crossing. Banks are suitable for log crossing all year.



Photo 16. Unnamed Creek to Kingfisher Lake (Poles 458-457), November 2002. The creek is frozen to the substrate, allowing winter access. The low and stable streambanks are suitable for a log crossing during the rest of the year.